

CURVE NO 1

T = 48.00'

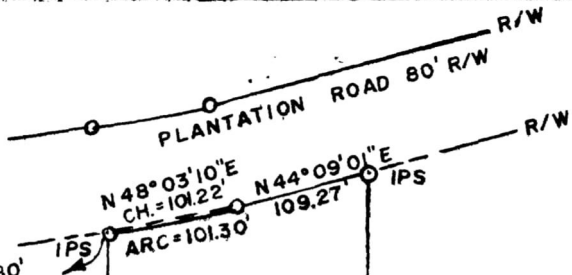
Δ = 7°48'20"

R = 703.59'

D = 8°08'36"

L = 95.85'

2584.92' ALONG R/W TO 80'
R/W OF ARNOLD ROAD.

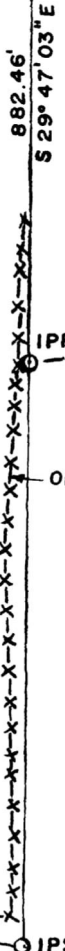


NOW OR FORMERLY
E.J. GLEATON ESTATE

3.80 ACRES

CITINATIONAL DEVELOPMENT TRUST
PLAT BOOK V, PAGE 233

JOHN D. GIBB
PLAT BOOK T, PAGE 264



ERROR OF CLOSURE
1' IN 10000'

20" TRANSIT & 200' TAPE WERE
USED ON THIS SURVEY.

FILED IN OFFICE
CLERK SUPERIOR COURT
GWINNETT COUNTY, GA.

Sep 27 3 20pm '79

REC. IN BOOK 11

PAGE NO 122 B

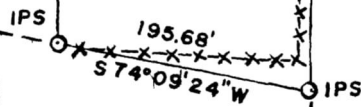
DATE 9-28-79

M. MILLER PEERY, CLERK

PROPERTY OF:
LARENCE E. & KAROLYN HAGADORN
L.L. 45 5TH DISTRICT
GWINNETT COUNTY, GEORGIA
SCALE: 1" = 100' AUGUST 27, 1979



IN WITNESS WHEREOF, I, THE CLERK, HAVE CAUSED THIS DEED TO BE RECORDED IN THE PUBLIC RECORDS OF THIS COUNTY AND THE SAME TO BE OPENED TO THE PUBLIC VIEW IN ACCORDANCE WITH THE STANDARDS AND REGULATIONS OF THE OFFICE OF THE CLERK OF THE SUPERIOR COURT OF GWINNETT COUNTY, GEORGIA.



J.M. SINGLEY

Gerald W. Bryson