

Recorded March 1, 1977 P.L.

- LEGEND:**
- I.P.F. = IRON PIN FOUND
 - I.P.S. = IRON PIN SET
 - P.L. = PROPERTY LINE
 - C.L. = CENTER LINE
 - B.L. = BUILDING LINE
 - R/W = RIGHT-OF-WAY
 - P- = POWER LINE
 - T- = TELEPHONE
 - W- = WATER LINE
 - S- = SEWER LINE
 - T.H. = TEST HOLE
 - M.H. = MANHOLE
 - M.T. = MARKED TREE
 - D.E. = DRAINAGE EASEMENT
 - S.E. = SEWER EASEMENT
 - D.A. = DRAINAGE AREA
 - H.W. = HEAD WALL
 - C.B. = CATCH BASIN
 - C.D. = CROSS DRAIN
 - P.T. = POINT OF TANGENCY
 - P.C. = POINT OF CURVATURE
 - R. = RADIUS

CITY NATIONAL DEV. TRUST

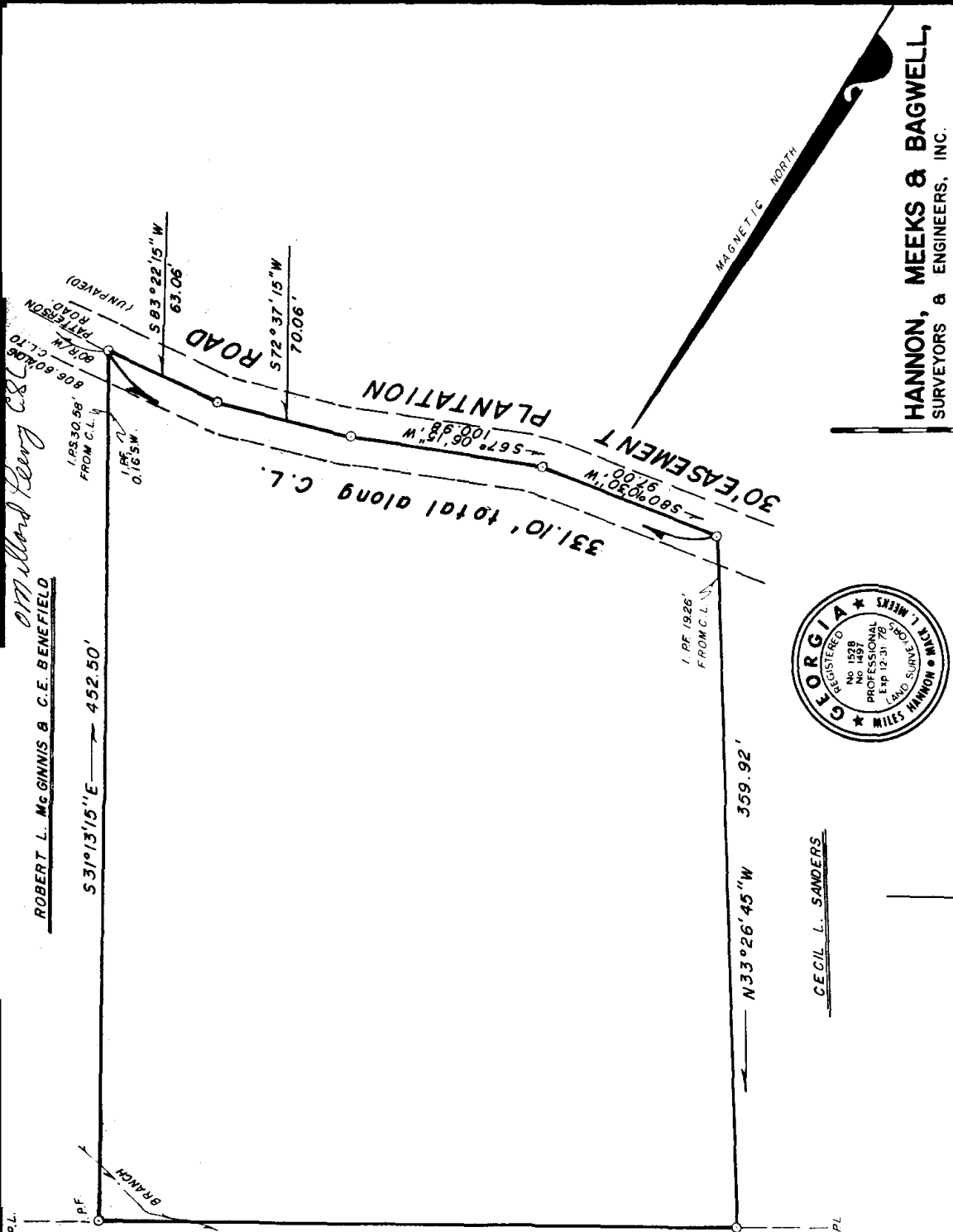
FILED & RECORDED
 CLERK SUPERIOR COURT
 GWINNETT COUNTY GA
 3/1/77 TIME
 11:00 AM
 LAWLER, CLERK

SURVEY FOR

M. L. YEARTY

LAND LOT 52 of the 5TH DISTRICT
 GWINNETT COUNTY, GEORGIA 2.993 ACRES

REVISIONS:
 DATE: 2-28-77
 SCALE: 1" = 50'



LAND PLANNING
 LAND SURVEYING
 FEASIBILITY STUDIES & ENGINEERING

IN MY OPINION, THIS PLAT IS CORRECT
 AND HAS BEEN PREPARED IN CONFORM-
 ITY WITH THE MINIMUM STANDARDS AND
 REQUIREMENTS OF THE GEORGIA
 SURVEYING & MAPPING SOCIETY, P.O.

HANNON, MEEKS & BAGWELL,
 SURVEYORS & ENGINEERS, INC.

238 BUFORD DRIVE
 LAWRENCEVILLE, GEORGIA 30245
 TELEPHONE 404/963-7181