

TRACT 3  
3.33 ACRES

TRACT 4  
4.72 ACRES

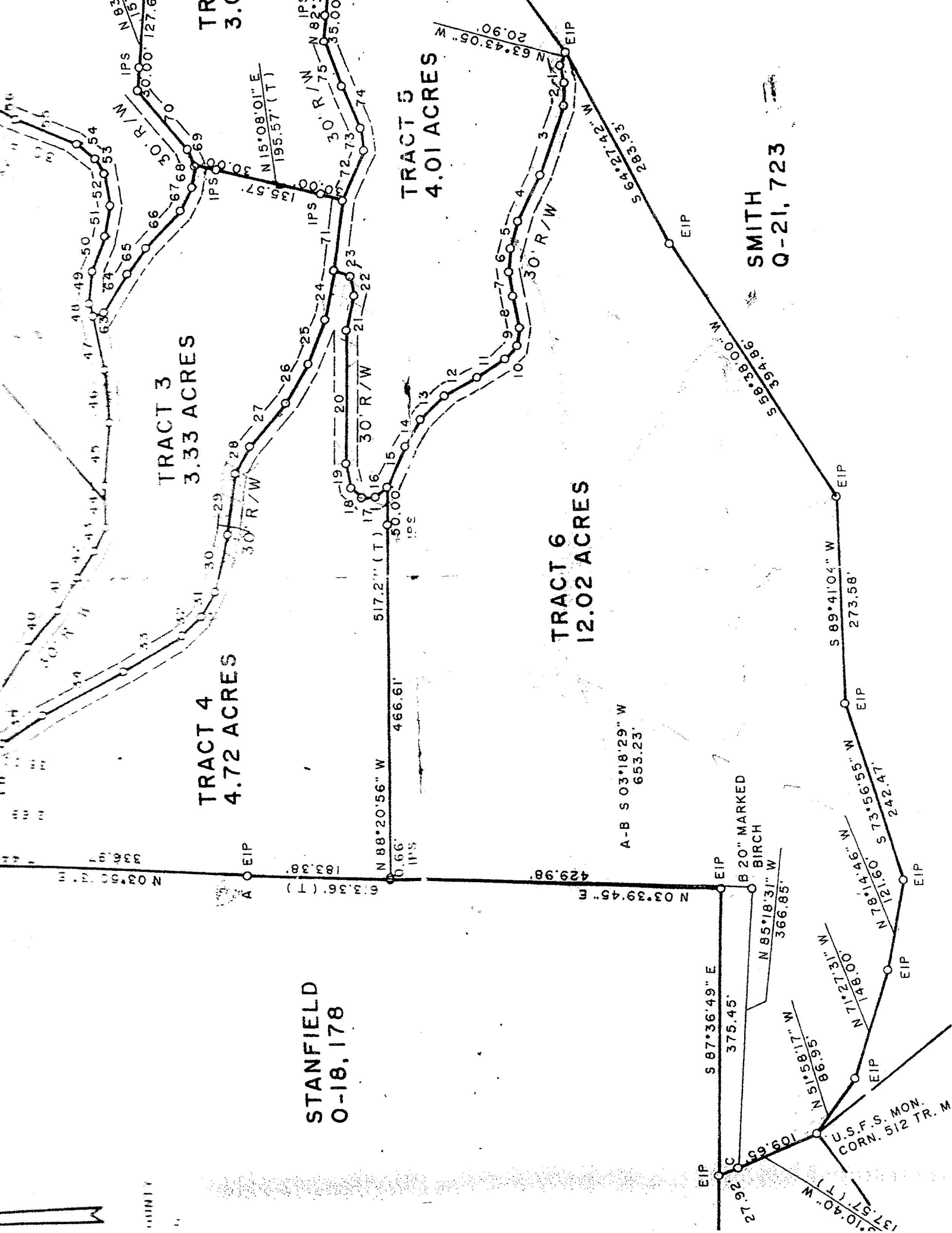
TRACT 5  
4.01 ACRES

TRACT 6  
12.02 ACRES

TR  
3.0

SMITH  
Q-21, 723

STANFIELD  
O-18, 178



N 03°50'45" W  
336.98'

N 88°20'56" W  
466.61'

N 88°20'56" W  
517.2" (T)

N 15°08'01" E  
195.57' (T)

TR  
3.0

TRACT 3  
3.33 ACRES

TRACT 4  
4.72 ACRES

TRACT 5  
4.01 ACRES

TRACT 6  
12.02 ACRES

SMITH  
Q-21, 723

STANFIELD  
O-18, 178

A-B S 03°18'29" W  
653.23'

B 20" MARKED  
BIRCH  
N 85°18'31" W  
366.85'

S 87°36'49" E  
375.45'

U.S.F.S. MON.  
CORN. 512 TR. M

N 10°40' W  
137.57' (T)

N 78°14'45" N  
1219.00'

S 73°56'55" W  
273.58'

S 89°41'04" W  
273.58'

S 58°38'00" W  
394.86'

S 64°27'42" W  
283.93'

N 63°43'05" W  
20.90'

N 82°3'55.00" W  
35.00'

30' R/W

30' R/W

30' R/W

30' R/W

30' R/W

30' R/W

30' R/W

30' R/W

30' R/W

30' R/W

30' R/W

30' R/W