

86

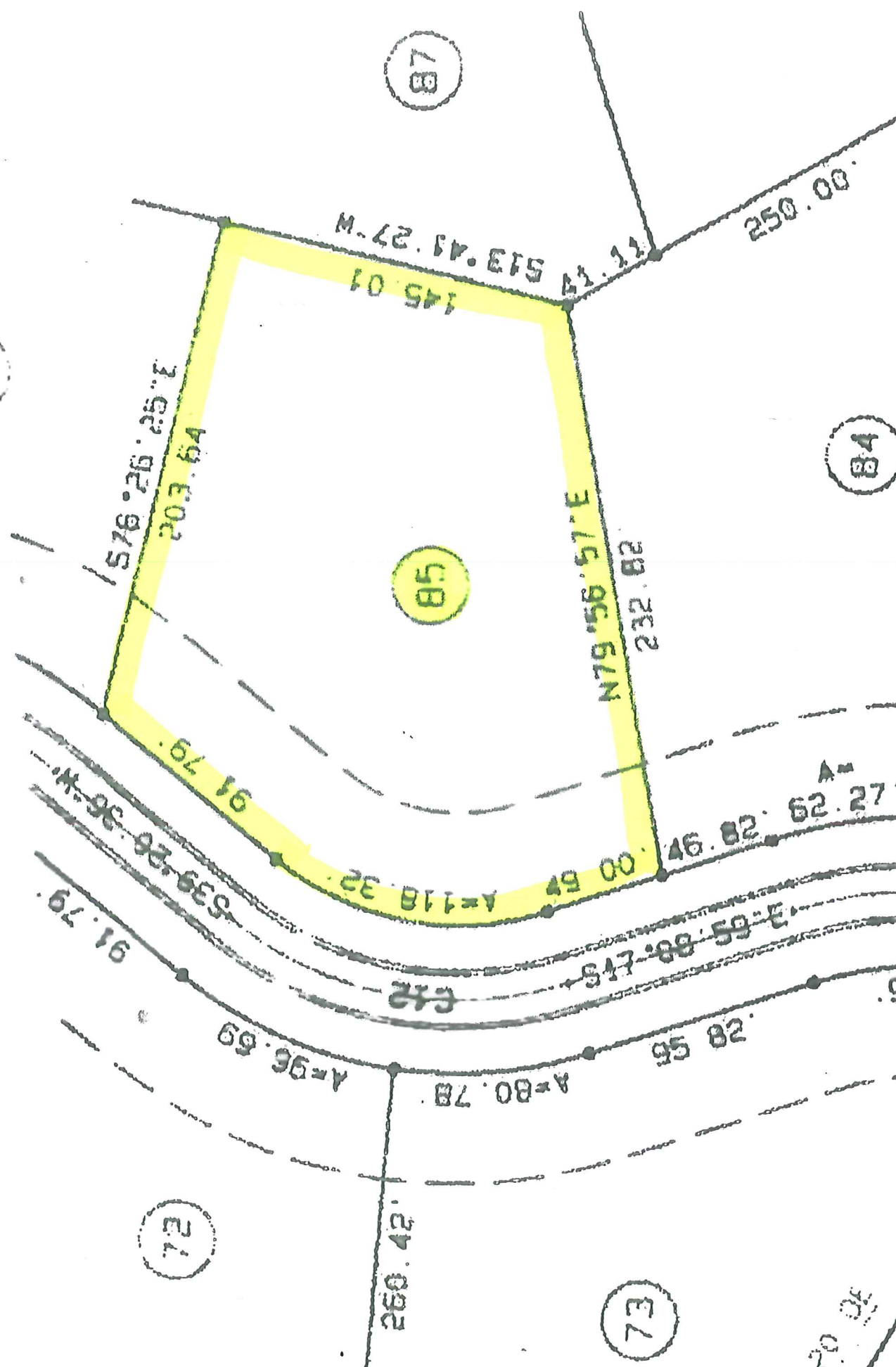
87

84

85

72

73



M. 12. 17. E15 41. 11

250.00

145.01

576°26'25\"

203.64

N79°56'57\"

232.82

91.79

A=118.32

A=62.27

M. 96. 26. 36. W

91.79

539.26

E12

3°55'58\"

A=96.69

A=80.78

95.82

260.42

20.05