

All the distances are by horizontal measurement. Bearings are magnetic and are obtained from angle board.

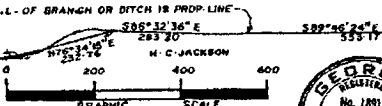
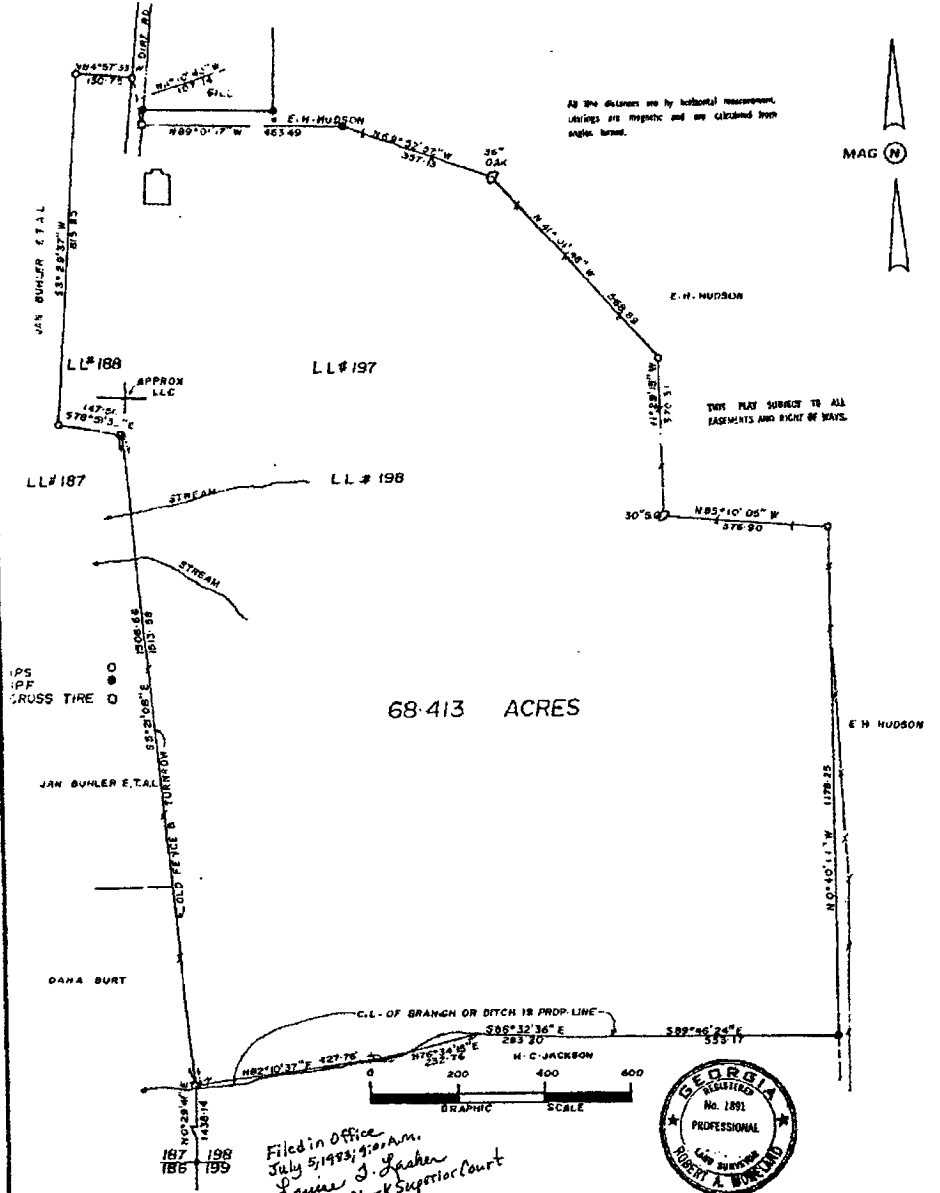
MAG N

E. H. HUDSON

THIS PLAT SUBJECT TO ALL EASEMENTS AND RIGHT OF WAYS.

68.413 ACRES

E. H. HUDSON



Filed in Office  
July 5, 1983; 9:20 AM  
Lester J. Lashen  
Deputy Clerk Superior Court

Survey and Plat By  
ROBERT A. MORELAND, R.L.S.  
Woodbury, Ga. Phone 553-5283  
Georgia License # 1891

PLAT OF SURVEY OF  
JANA F. MANN EST. IN LL# 187, 188, 197, 198  
2nd L.D. MERIWETHER COUNTY GA  
JUNE 28 1983 SCALE 1" = 200'

THIS PLAT HAS BEEN CALCULATED FOR  
CLOSURE AND FOUND TO BE  
ACCURATE WITHIN ONE FOOT AND SIX INCHES.

The field data upon which this plat is based has  
a closure of one foot in 222 feet, and its  
angular error of 1.00 in 1000 feet and was adjusted  
by Cross rule.