

CERTIFICATE OF SURVEY
ALEXANDRIA, LA., NOV 5 1951 1070-7

TO ALL PARTIES INTERESTED IN TITLE TO PREMISES SURVEYED:

I HEREBY CERTIFY THAT THIS PLAT CORRECTLY REPRESENTS THE SURVEY MADE OF THE FOLLOWING DESCRIBED PREMISES OR TRACT OF LAND TO WIT: LOT 2 AND PART OF LOTS 1, 3 AND 4, S. 26, CITY OF ALEXANDRIA AS PER PLAT THEREIN RECORDED IN PLAT BOOK 4, PAGE 148, RECORDS OF

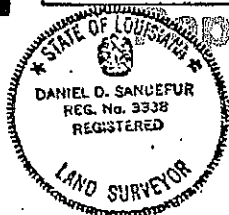
SCALE: 1" = 30'

RAPIDES PARISH, LA.
DANIEL D. SANDEFUR, INC.

FOR

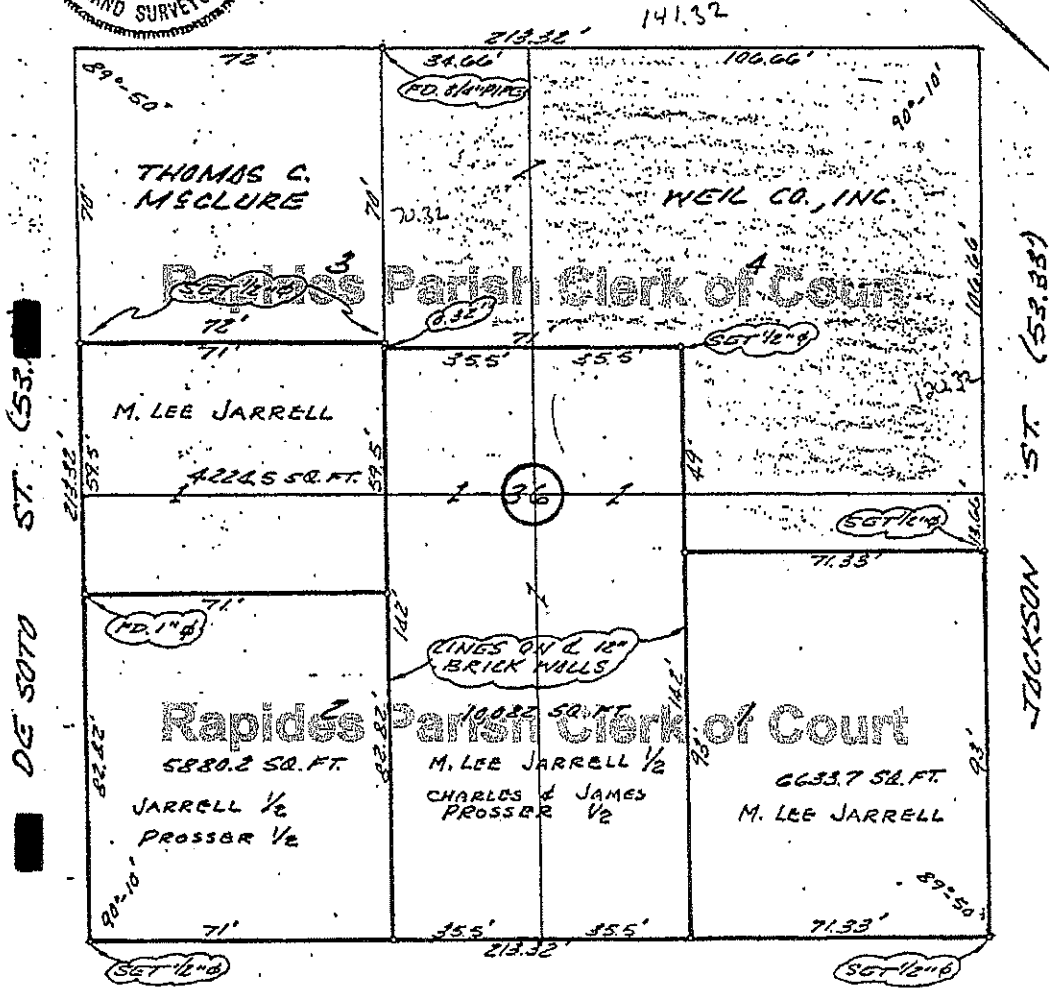
AT REQUEST ROD HOLES

Daniel D. Sandefur



Rapides Parish Clerk of Court

6TH ST. (53.33')



5TH ST. (53.33')

A. 4/12