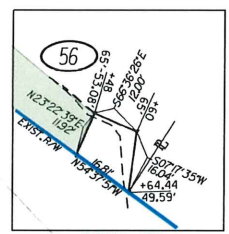


T-14-N; R-4-E

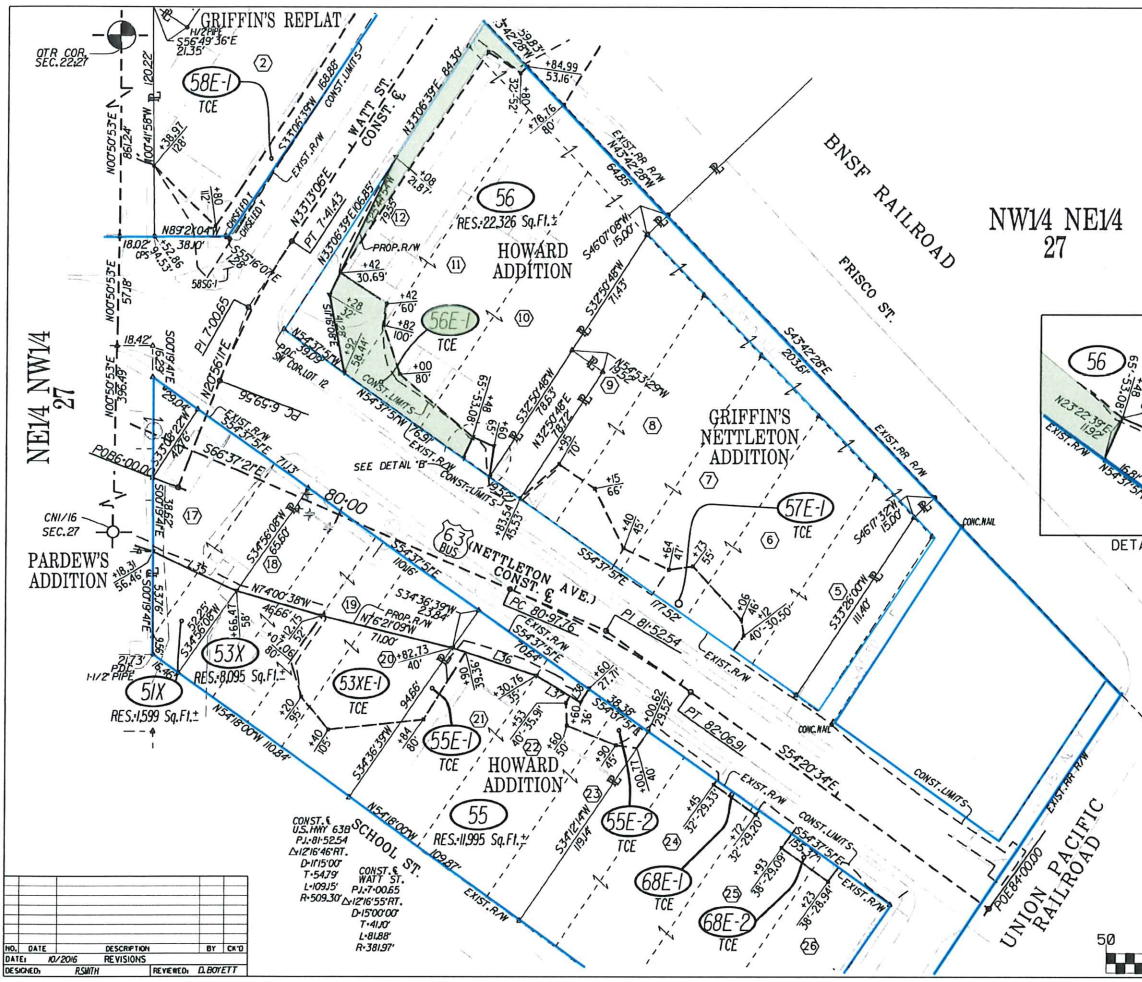
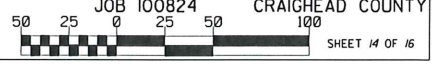


NW1/4 NE1/4  
27



Name	Line Length	Table Direction
L35	48.19'	N 64° 47' 07" W
L36	45.32'	N 71° 37' 29" W
L37	27.21'	N 59° 09' 34" W
L38	8.29'	S 30° 22' 48" W

BNSF RAILROAD OVERPASS  
(JONESBORO) P.E.  
ARKANSAS STATE HIGHWAY COMMISSION  
RIGHT OF WAY MAP  
JOB 100824 CRAIGHEAD COUNTY



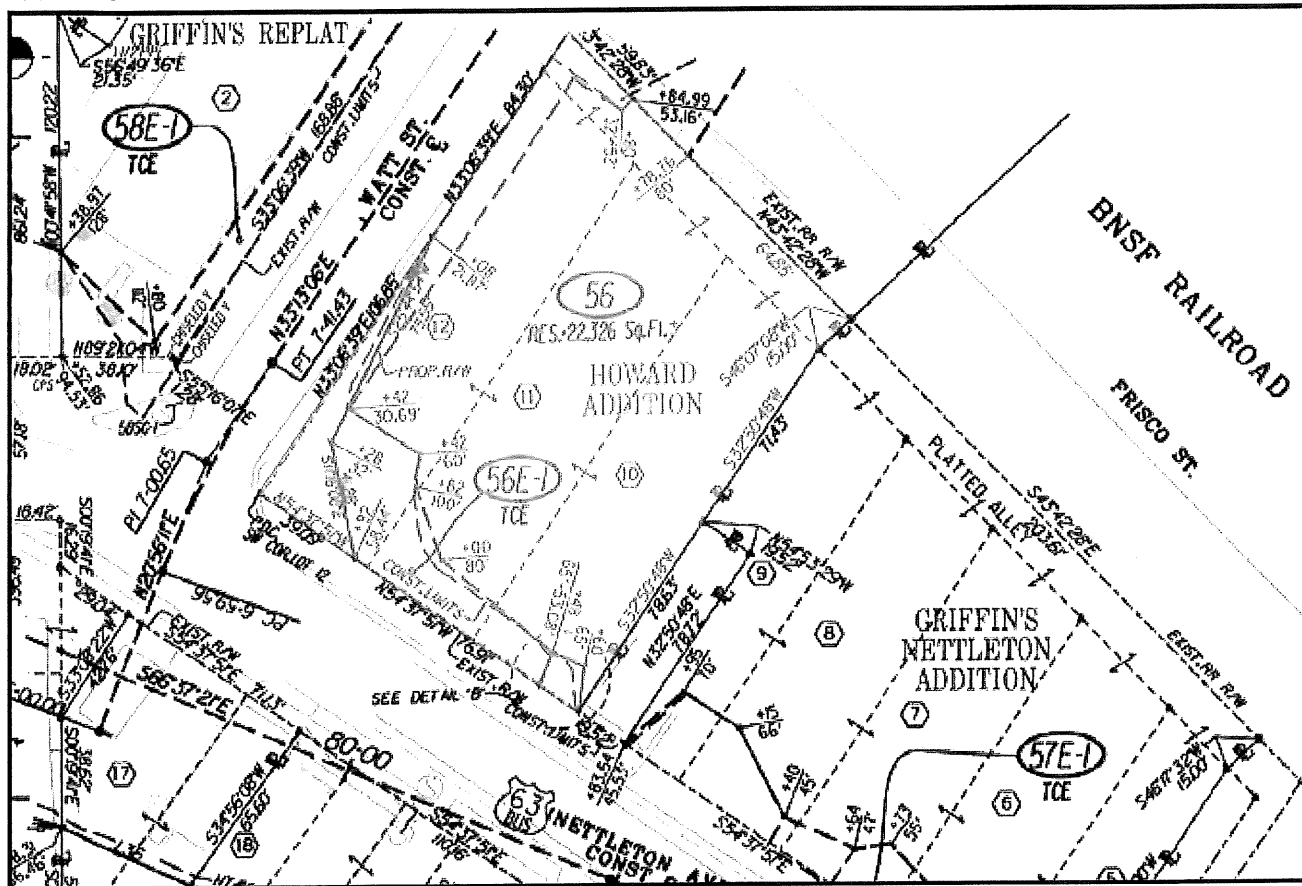
NO.	DATE	DESCRIPTION	BY	CHK'D
1	02/2016	REVISIONS		

DESIGNED: RUMPH REVISIONS: D. BOYETT

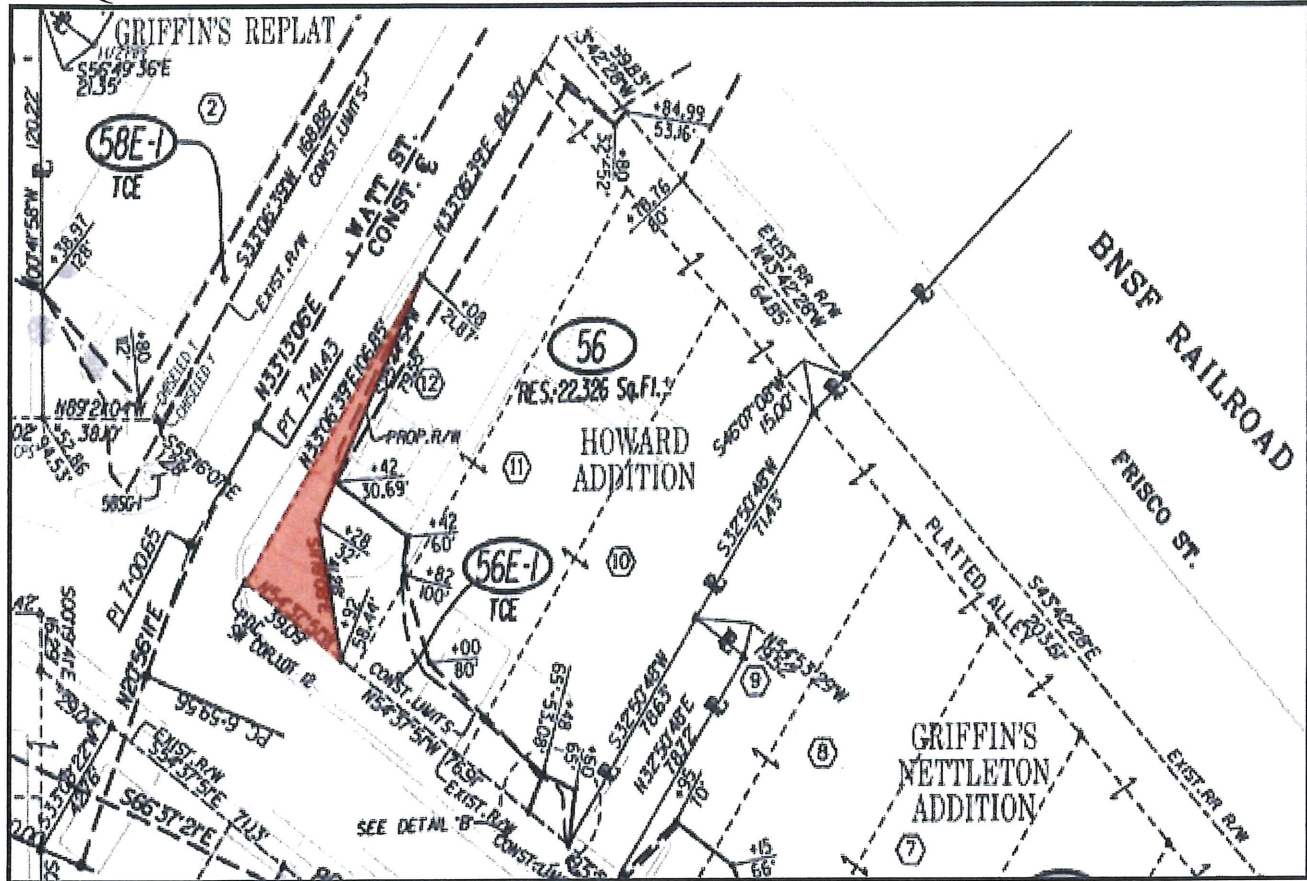
CONST. & U.S. PAT. 130  
PL-01-5824  
N-1216-48 RT.  
D-115100'  
T-5479'  
L-10915'  
R-509.30  
T-400'  
L-848E'  
R-38151'

CONST. & HAIT ST.  
PL-17-0065  
D-150000'  
T-400'  
L-848E'  
R-38151'

# WHOLE PROPERTY



# REQUIRED RIGHT OF WAY (Tract 53X)



# TEMPORARY CONSTRUCTION EASEMENT (Tract 53XE-1)

