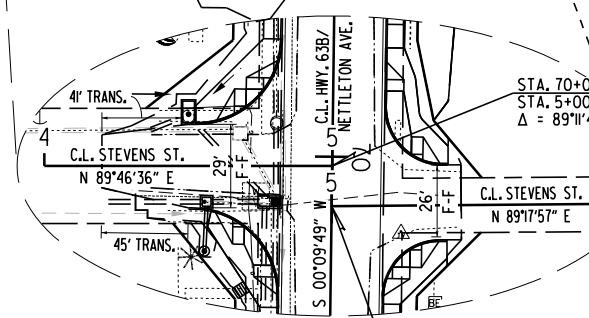
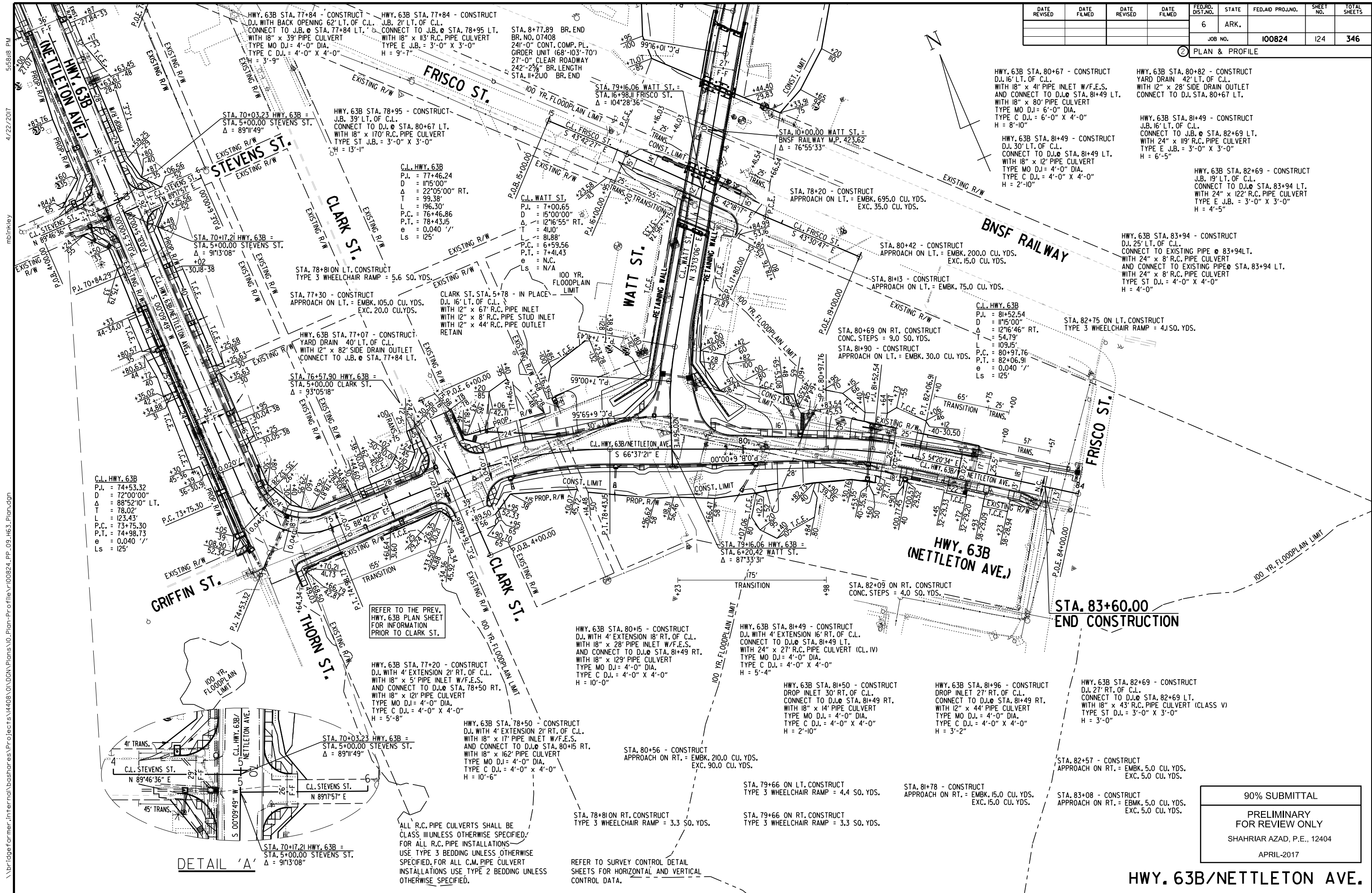


DATE REVISED	DATE FILMED	DATE REVISED	DATE FILMED	FED. RD. DIST. NO.	STATE	FED. AID PROJ. NO.	SHEET NO.	TOTAL SHEETS
				6	ARK.		124	346
				JOB NO. 100824				

PLAN & PROFILE



REFER TO THE PREV. HWY. 63B PLAN SHEET FOR INFORMATION PRIOR TO CLARK ST.

HWY. 63B STA. 77+20 - CONSTRUCT D.I. WITH 4' EXTENSION 21' RT. OF C.L. WITH 18" x 5' PIPE INLET W/F.E.S. AND CONNECT TO D.I. @ STA. 78+50 RT. WITH 18" x 12" PIPE CULVERT TYPE MO D.I. = 4'-0" DIA. TYPE C D.I. = 4'-0" X 4'-0" H = 5'-8"

HWY. 63B STA. 77+50 - CONSTRUCT D.I. WITH 4' EXTENSION 21' RT. OF C.L. WITH 18" x 17" PIPE INLET W/F.E.S. AND CONNECT TO D.I. @ STA. 80+15 RT. WITH 18" x 162" PIPE CULVERT TYPE MO D.I. = 4'-0" DIA. TYPE C D.I. = 4'-0" X 4'-0" H = 10'-6"

HWY. 63B STA. 78+50 - CONSTRUCT D.I. WITH 4' EXTENSION 21' RT. OF C.L. WITH 18" x 17" PIPE INLET W/F.E.S. AND CONNECT TO D.I. @ STA. 80+15 RT. WITH 18" x 162" PIPE CULVERT TYPE MO D.I. = 4'-0" DIA. TYPE C D.I. = 4'-0" X 4'-0" H = 10'-6"

HWY. 63B STA. 78+50 - CONSTRUCT D.I. WITH 4' EXTENSION 21' RT. OF C.L. WITH 18" x 17" PIPE INLET W/F.E.S. AND CONNECT TO D.I. @ STA. 80+15 RT. WITH 18" x 162" PIPE CULVERT TYPE MO D.I. = 4'-0" DIA. TYPE C D.I. = 4'-0" X 4'-0" H = 10'-6"

ALL R.C. PIPE CULVERTS SHALL BE CLASS III UNLESS OTHERWISE SPECIFIED. FOR ALL R.C. PIPE INSTALLATIONS USE TYPE 3 BEDDING UNLESS OTHERWISE SPECIFIED. FOR ALL C.M. PIPE CULVERT INSTALLATIONS USE TYPE 2 BEDDING UNLESS OTHERWISE SPECIFIED.

HWY. 63B STA. 80+15 - CONSTRUCT D.I. WITH 4' EXTENSION 18' RT. OF C.L. WITH 18" x 28" PIPE INLET W/F.E.S. AND CONNECT TO D.I. @ STA. 81+49 RT. WITH 18" x 129" PIPE CULVERT TYPE MO D.I. = 4'-0" DIA. TYPE C D.I. = 4'-0" X 4'-0" H = 10'-0"

HWY. 63B STA. 81+49 - CONSTRUCT D.I. WITH 4' EXTENSION 16' RT. OF C.L. CONNECT TO D.I. @ STA. 81+49 LT. WITH 24" x 27" R.C. PIPE CULVERT (CL. IV) TYPE MO D.I. = 4'-0" DIA. TYPE C D.I. = 4'-0" X 4'-0" H = 5'-4"

HWY. 63B STA. 81+50 - CONSTRUCT DROP INLET 30' RT. OF C.L. CONNECT TO D.I. @ STA. 81+49 RT. WITH 18" x 14" PIPE CULVERT TYPE MO D.I. = 4'-0" DIA. TYPE C D.I. = 4'-0" X 4'-0" H = 2'-10"

HWY. 63B STA. 81+96 - CONSTRUCT DROP INLET 27' RT. OF C.L. CONNECT TO D.I. @ STA. 81+49 RT. WITH 18" x 14" PIPE CULVERT TYPE MO D.I. = 4'-0" DIA. TYPE C D.I. = 4'-0" X 4'-0" H = 3'-2"

HWY. 63B STA. 82+69 - CONSTRUCT D.I. 27' RT. OF C.L. CONNECT TO D.I. @ STA. 82+69 LT. WITH 18" x 43" R.C. PIPE CULVERT (CLASS V) TYPE ST D.I. = 3'-0" X 3'-0" H = 3'-0"

HWY. 63B STA. 82+57 - CONSTRUCT APPROACH ON RT. = EMBK. 5.0 CU. YDS. EXC. 5.0 CU. YDS.

HWY. 63B STA. 83+08 - CONSTRUCT APPROACH ON RT. = EMBK. 5.0 CU. YDS. EXC. 5.0 CU. YDS.

REFER TO SURVEY CONTROL DETAIL SHEETS FOR HORIZONTAL AND VERTICAL CONTROL DATA.

HWY. 63B STA. 80+56 - CONSTRUCT APPROACH ON RT. = EMBK. 210.0 CU. YDS. EXC. 90.0 CU. YDS.

HWY. 63B STA. 81+50 - CONSTRUCT DROP INLET 30' RT. OF C.L. CONNECT TO D.I. @ STA. 81+49 RT. WITH 18" x 14" PIPE CULVERT TYPE MO D.I. = 4'-0" DIA. TYPE C D.I. = 4'-0" X 4'-0" H = 2'-10"

HWY. 63B STA. 81+96 - CONSTRUCT DROP INLET 27' RT. OF C.L. CONNECT TO D.I. @ STA. 81+49 RT. WITH 18" x 14" PIPE CULVERT TYPE MO D.I. = 4'-0" DIA. TYPE C D.I. = 4'-0" X 4'-0" H = 3'-2"

HWY. 63B STA. 82+69 - CONSTRUCT D.I. 27' RT. OF C.L. CONNECT TO D.I. @ STA. 82+69 LT. WITH 18" x 43" R.C. PIPE CULVERT (CLASS V) TYPE ST D.I. = 3'-0" X 3'-0" H = 3'-0"

HWY. 63B STA. 82+57 - CONSTRUCT APPROACH ON RT. = EMBK. 5.0 CU. YDS. EXC. 5.0 CU. YDS.

HWY. 63B STA. 83+08 - CONSTRUCT APPROACH ON RT. = EMBK. 5.0 CU. YDS. EXC. 5.0 CU. YDS.

REFER TO SURVEY CONTROL DETAIL SHEETS FOR HORIZONTAL AND VERTICAL CONTROL DATA.

HWY. 63B STA. 80+15 - CONSTRUCT D.I. WITH 4' EXTENSION 18' RT. OF C.L. WITH 18" x 28" PIPE INLET W/F.E.S. AND CONNECT TO D.I. @ STA. 81+49 RT. WITH 18" x 129" PIPE CULVERT TYPE MO D.I. = 4'-0" DIA. TYPE C D.I. = 4'-0" X 4'-0" H = 10'-0"

HWY. 63B STA. 81+49 - CONSTRUCT D.I. WITH 4' EXTENSION 16' RT. OF C.L. CONNECT TO D.I. @ STA. 81+49 LT. WITH 24" x 27" R.C. PIPE CULVERT (CL. IV) TYPE MO D.I. = 4'-0" DIA. TYPE C D.I. = 4'-0" X 4'-0" H = 5'-4"

HWY. 63B STA. 81+50 - CONSTRUCT DROP INLET 30' RT. OF C.L. CONNECT TO D.I. @ STA. 81+49 RT. WITH 18" x 14" PIPE CULVERT TYPE MO D.I. = 4'-0" DIA. TYPE C D.I. = 4'-0" X 4'-0" H = 2'-10"

HWY. 63B STA. 81+96 - CONSTRUCT DROP INLET 27' RT. OF C.L. CONNECT TO D.I. @ STA. 81+49 RT. WITH 18" x 14" PIPE CULVERT TYPE MO D.I. = 4'-0" DIA. TYPE C D.I. = 4'-0" X 4'-0" H = 3'-2"

HWY. 63B STA. 82+69 - CONSTRUCT D.I. 27' RT. OF C.L. CONNECT TO D.I. @ STA. 82+69 LT. WITH 18" x 43" R.C. PIPE CULVERT (CLASS V) TYPE ST D.I. = 3'-0" X 3'-0" H = 3'-0"

HWY. 63B STA. 82+57 - CONSTRUCT APPROACH ON RT. = EMBK. 5.0 CU. YDS. EXC. 5.0 CU. YDS.

HWY. 63B STA. 83+08 - CONSTRUCT APPROACH ON RT. = EMBK. 5.0 CU. YDS. EXC. 5.0 CU. YDS.

REFER TO SURVEY CONTROL DETAIL SHEETS FOR HORIZONTAL AND VERTICAL CONTROL DATA.

HWY. 63B STA. 80+56 - CONSTRUCT APPROACH ON RT. = EMBK. 210.0 CU. YDS. EXC. 90.0 CU. YDS.

HWY. 63B STA. 81+50 - CONSTRUCT DROP INLET 30' RT. OF C.L. CONNECT TO D.I. @ STA. 81+49 RT. WITH 18" x 14" PIPE CULVERT TYPE MO D.I. = 4'-0" DIA. TYPE C D.I. = 4'-0" X 4'-0" H = 2'-10"

HWY. 63B STA. 81+96 - CONSTRUCT DROP INLET 27' RT. OF C.L. CONNECT TO D.I. @ STA. 81+49 RT. WITH 18" x 14" PIPE CULVERT TYPE MO D.I. = 4'-0" DIA. TYPE C D.I. = 4'-0" X 4'-0" H = 3'-2"

HWY. 63B STA. 82+69 - CONSTRUCT D.I. 27' RT. OF C.L. CONNECT TO D.I. @ STA. 82+69 LT. WITH 18" x 43" R.C. PIPE CULVERT (CLASS V) TYPE ST D.I. = 3'-0" X 3'-0" H = 3'-0"

HWY. 63B STA. 82+57 - CONSTRUCT APPROACH ON RT. = EMBK. 5.0 CU. YDS. EXC. 5.0 CU. YDS.

HWY. 63B STA. 83+08 - CONSTRUCT APPROACH ON RT. = EMBK. 5.0 CU. YDS. EXC. 5.0 CU. YDS.

REFER TO SURVEY CONTROL DETAIL SHEETS FOR HORIZONTAL AND VERTICAL CONTROL DATA.

90% SUBMITTAL
 PRELIMINARY
 FOR REVIEW ONLY
 SHAHRIAR AZAD, P.E., 12404
 APRIL-2017

HWY. 63B/NETTLETON AVE.

4/22/2017 5:58:19 PM

mbinkley

\\br-ldge\former_internal\boshasa\Projects\14408\0\DCM\Plans\0_Plan_Profile\100824_PP_10_H63_Profile.dgn

ALL R.C. PIPE CULVERTS SHALL BE CLASS III UNLESS OTHERWISE SPECIFIED. FOR ALL R.C. PIPE INSTALLATIONS USE TYPE 3 BEDDING UNLESS OTHERWISE SPECIFIED. FOR ALL C.M. PIPE CULVERT INSTALLATIONS USE TYPE 2 BEDDING UNLESS OTHERWISE SPECIFIED.

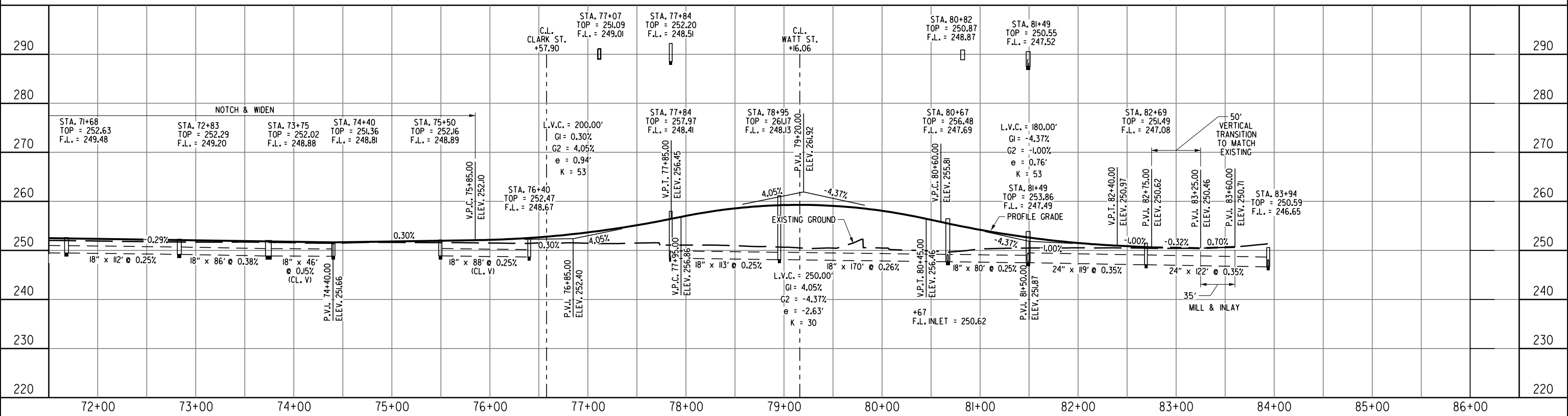
REFER TO SURVEY CONTROL SHEETS FOR HORIZONTAL AND VERTICAL CONTROL DATA.

STA. 72+81.55 BEGIN SUPERELEVATION (0.040 %)
STA. 74+06.55 MAX. SUPERELEVATION (0.040 %)
STA. 74+47.79 MAX. SUPERELEVATION (0.040 %)
STA. 75+72.79 END/BGN. SUPERELEVATION (0.040 %)
STA. 76+97.79 MAX. SUPERELEVATION (0.040 %)
STA. 81+75.66 MAX. SUPERELEVATION (0.040 %)
STA. 83+00.66 END SUPERELEVATION (0.040 %)
SUPER ROTATED ABOUT HWY. 63B/NETTLETON INSIDE PVMT. EDGE

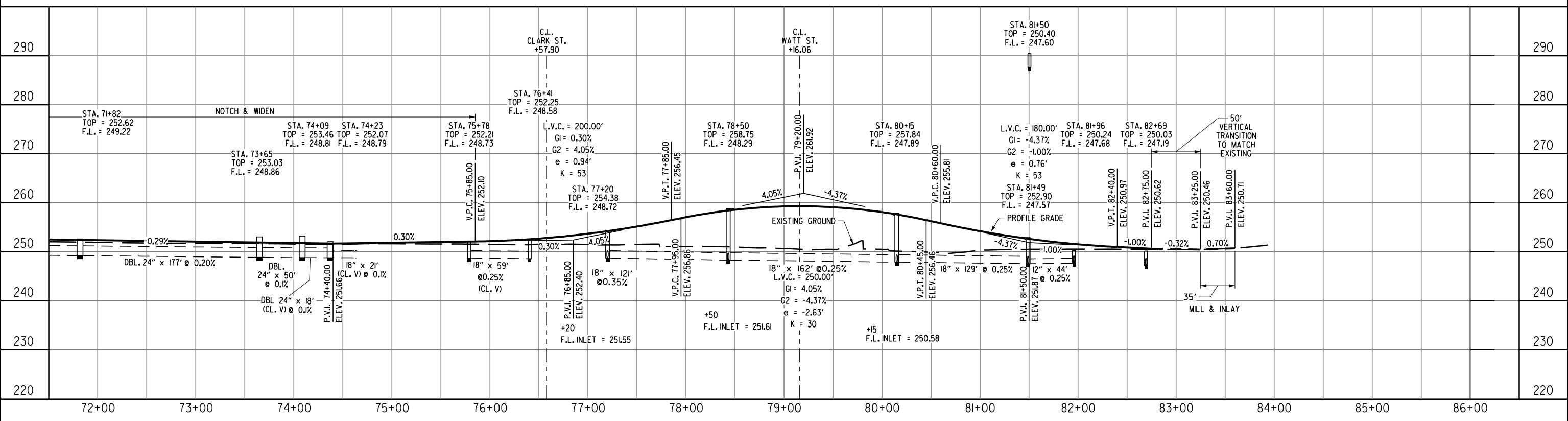
90% SUBMITTAL
PRELIMINARY FOR REVIEW ONLY
SHAHRIAR AZAD, P.E., 12404
APRIL-2017

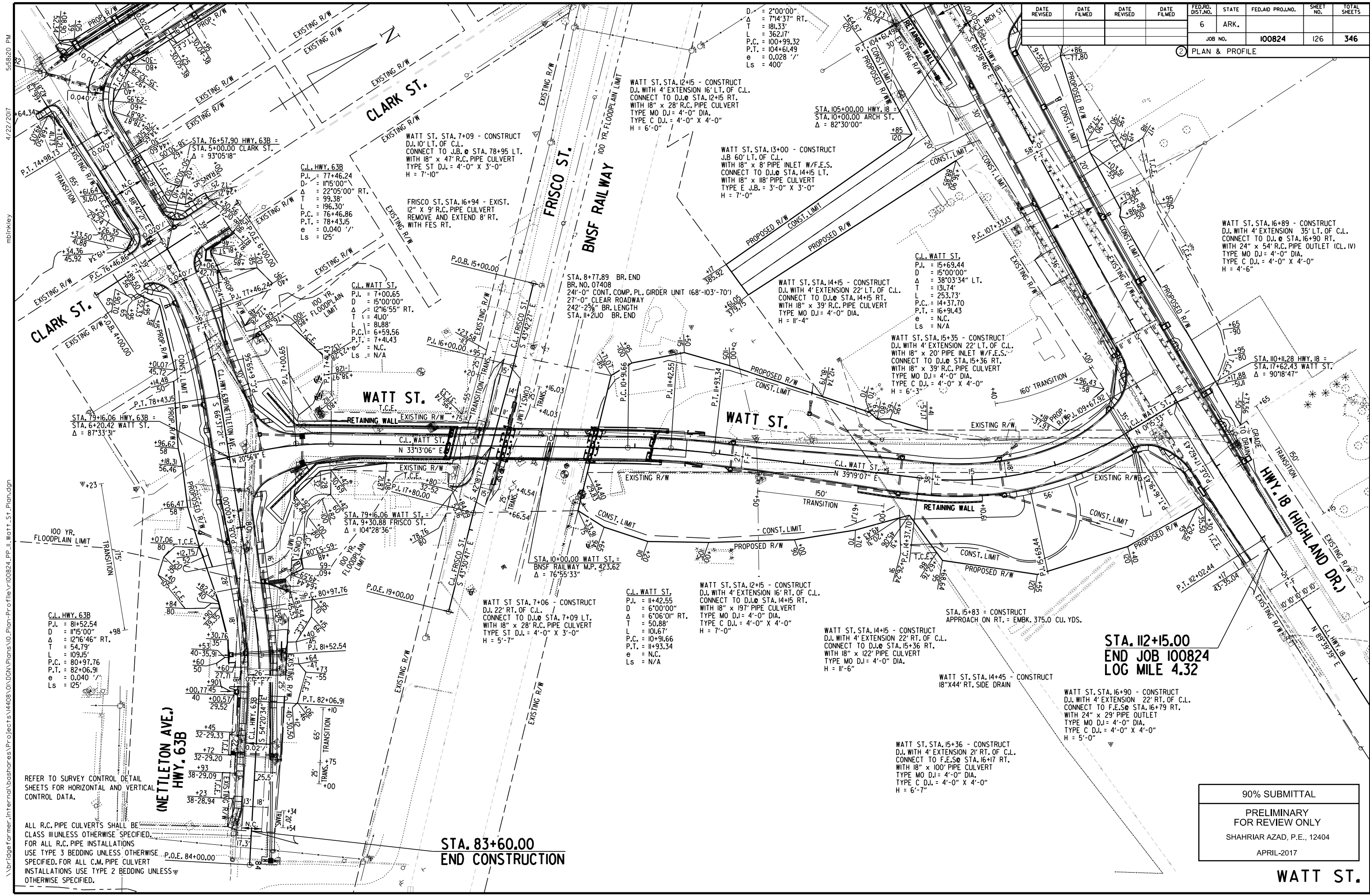
DATE REVISED	DATE FILMED	DATE REVISED	DATE FILMED	FED. RD. DIST. NO.	STATE	FED. AID PROJ. NO.	SHEET NO.	TOTAL SHEETS
				6	ARK.		125	346
							JOB NO. 100824	
							PLAN & PROFILE	

LEFT SIDE OF HWY. 63B/NETTLETON AVE.



RIGHT SIDE OF HWY. 63B/NETTLETON AVE.





DATE REVISED	DATE FILMED	DATE REVISED	DATE FILMED	FED. RD. DIST. NO.	STATE	FED. AID PROJ. NO.	SHEET NO.	TOTAL SHEETS
				6	ARK.			
				JOB NO.		100824	126	346

PLAN & PROFILE

D = 2'00"00"
 Δ = 7'14"37" RT.
 T = 181.33'
 P.C. = 100+99.32
 P.T. = 104+61.49
 e = 0.028' /'
 Ls = 400'

WATT ST. STA. 12+15 - CONSTRUCT D.I. WITH 4' EXTENSION 16' LT. OF C.L. CONNECT TO D.I. @ STA. 12+15 RT. WITH 18" x 28" R.C. PIPE CULVERT TYPE MO D.I. = 4'-0" DIA. TYPE C D.I. = 4'-0" X 4'-0" H = 6'-0"

STA. 105+00.00 HWY. 18 = STA. 10+00.00 ARCH ST. Δ = 82'30"00"

WATT ST. STA. 13+00 - CONSTRUCT J.B. 60' LT. OF C.L. WITH 18" x 8" PIPE INLET W/F.E.S. CONNECT TO D.I. @ STA. 14+15 LT. WITH 18" x 18" PIPE CULVERT TYPE E J.B. = 3'-0" X 3'-0" H = 7'-0"

WATT ST. STA. 7+09 - CONSTRUCT D.I. 10' LT. OF C.L. CONNECT TO J.B. @ STA. 78+95 LT. WITH 18" x 47" R.C. PIPE CULVERT TYPE ST D.I. = 4'-0" X 3'-0" H = 7'-10"

FRISCO ST. STA. 16+94 - EXIST. 12" x 9" R.C. PIPE CULVERT REMOVE AND EXTEND 8' RT. WITH FES RT.

C.L. HWY. 63B
 P.I. = 77+46.24
 D = 11'5"00"
 Δ = 22'05"00" RT.
 T = 99.38'
 L = 196.30'
 P.C. = 76+46.86
 P.T. = 78+43.15
 e = 0.040' /'
 Ls = 125'

C.L. WATT ST.
 P.I. = 7+00.65
 D = 15'00"00"
 Δ = 12'16"55" RT.
 T = 41.0'
 L = 81.88'
 P.C. = 6+59.56
 P.T. = 7+41.43
 e = N.C.
 Ls = N/A

STA. 8+77.89 BR. END BR. NO. 07408 24'-0" CONT. COMP. PL. GIRDER UNIT (68'-103'-70') 27'-0" CLEAR ROADWAY 242'-29" BR. LENGTH STA. 11+21.0 BR. END

WATT ST. STA. 14+15 - CONSTRUCT D.I. WITH 4' EXTENSION 22' LT. OF C.L. CONNECT TO D.I. @ STA. 14+15 RT. WITH 18" x 39" R.C. PIPE CULVERT TYPE MO D.I. = 4'-0" DIA. H = 11'-4"

C.L. WATT ST.
 P.I. = 15+69.44
 D = 15'00"00"
 Δ = 38'03"34" LT.
 T = 131.74'
 L = 253.73'
 P.C. = 14+37.70
 P.T. = 16+91.43
 e = N.C.
 Ls = N/A

WATT ST. STA. 15+35 - CONSTRUCT D.I. WITH 4' EXTENSION 22' LT. OF C.L. WITH 18" x 20" PIPE INLET W/F.E.S. CONNECT TO D.I. @ STA. 15+36 RT. WITH 18" x 39" R.C. PIPE CULVERT TYPE MO D.I. = 4'-0" DIA. TYPE C D.I. = 4'-0" X 4'-0" H = 6'-3"

WATT ST. STA. 16+89 - CONSTRUCT D.I. WITH 4' EXTENSION 35' LT. OF C.L. CONNECT TO D.I. @ STA. 16+90 RT. WITH 24" x 54" R.C. PIPE OUTLET (CL. IV) TYPE MO D.I. = 4'-0" DIA. TYPE C D.I. = 4'-0" X 4'-0" H = 4'-6"

STA. 110+11.28 HWY. 18 = STA. 17+62.43 WATT ST. Δ = 90'18"47"

WATT ST. T.C.E.

WATT ST. T.C.E.

C.L. WATT ST. N 33°13'06" E

C.L. WATT ST. N 39°19'07" E

STA. 79+16.06 WATT ST. = STA. 9+30.88 FRISCO ST. Δ = 104'28"36"

STA. 10+00.00 WATT ST. = BNSF RAILWAY M.P. 423.62 Δ = 76'55"33"

WATT ST. STA. 7+06 - CONSTRUCT D.I. 22' RT. OF C.L. CONNECT TO D.I. @ STA. 7+09 LT. WITH 18" x 28" R.C. PIPE CULVERT TYPE ST D.I. = 4'-0" X 3'-0" H = 5'-7"

C.L. WATT ST.
 P.I. = 11+42.55
 D = 6'00"00"
 Δ = 6'06"01" RT.
 T = 50.88'
 L = 101.67'
 P.C. = 10+91.66
 P.T. = 11+93.34
 e = N.C.
 Ls = N/A

WATT ST. STA. 12+15 - CONSTRUCT D.I. WITH 4' EXTENSION 16' RT. OF C.L. CONNECT TO D.I. @ STA. 14+15 RT. WITH 18" x 19" PIPE CULVERT TYPE MO D.I. = 4'-0" DIA. TYPE C D.I. = 4'-0" X 4'-0" H = 7'-0"

WATT ST. STA. 14+15 - CONSTRUCT D.I. WITH 4' EXTENSION 22' RT. OF C.L. CONNECT TO D.I. @ STA. 15+36 RT. WITH 18" x 122" PIPE CULVERT TYPE MO D.I. = 4'-0" DIA. H = 11'-6"

STA. 15+83 = CONSTRUCT APPROACH ON RT. = EMBK. 375.0 CU. YDS.

WATT ST. STA. 14+45 - CONSTRUCT 18" x 44" RT. SIDE DRAIN

STA. 112+15.00
 END JOB 100824
 LOG MILE 4.32

WATT ST. STA. 16+90 - CONSTRUCT D.I. WITH 4' EXTENSION 22' RT. OF C.L. CONNECT TO F.E.S. @ STA. 16+79 RT. WITH 24" x 29" PIPE OUTLET TYPE MO D.I. = 4'-0" DIA. TYPE C D.I. = 4'-0" X 4'-0" H = 5'-0"

WATT ST. STA. 15+36 - CONSTRUCT D.I. WITH 4' EXTENSION 21' RT. OF C.L. CONNECT TO F.E.S. @ STA. 16+17 RT. WITH 18" x 100" PIPE CULVERT TYPE MO D.I. = 4'-0" DIA. TYPE C D.I. = 4'-0" X 4'-0" H = 6'-7"

C.L. HWY. 63B
 P.I. = 81+52.54
 D = 11'5"00"
 Δ = 12'16"46" RT.
 T = 54.79'
 L = 109.15'
 P.C. = 80+97.76
 P.T. = 82+06.91
 e = 0.040' /'
 Ls = 125'

(NETTLETON AVE.)
 HWY. 63B

STA. 83+60.00
 END CONSTRUCTION

90% SUBMITTAL
 PRELIMINARY
 FOR REVIEW ONLY
 SHAHRIAR AZAD, P.E., 12404
 APRIL-2017

WATT ST.

REFER TO SURVEY CONTROL DETAIL SHEETS FOR HORIZONTAL AND VERTICAL CONTROL DATA.

ALL R.C. PIPE CULVERTS SHALL BE CLASS III UNLESS OTHERWISE SPECIFIED. FOR ALL R.C. PIPE INSTALLATIONS USE TYPE 3 BEDDING UNLESS OTHERWISE SPECIFIED. FOR ALL C.M. PIPE CULVERT INSTALLATIONS USE TYPE 2 BEDDING UNLESS OTHERWISE SPECIFIED.

\\bridgeformer.internal\bossharsh\Projects\14408\01\DCM\Plans\01\Plan-Profile\100824_PP_11_Watt_St_Plan.dgn 4/22/2017 5:58:20 PM mbinkley

5:58:21 PM

4/22/2017

mbinkley

\\bridgeformer.internal\eshores\Projects\14408\01\DCM\Plans\0_Plan_Profile\100824_PP_12_Watt_Profile.dgn

ALL R.C. PIPE CULVERTS SHALL BE CLASS III UNLESS OTHERWISE SPECIFIED. FOR ALL R.C. PIPE INSTALLATIONS USE TYPE 3 BEDDING UNLESS OTHERWISE SPECIFIED. FOR ALL C.M. PIPE CULVERT INSTALLATIONS USE TYPE 2 BEDDING UNLESS OTHERWISE SPECIFIED.

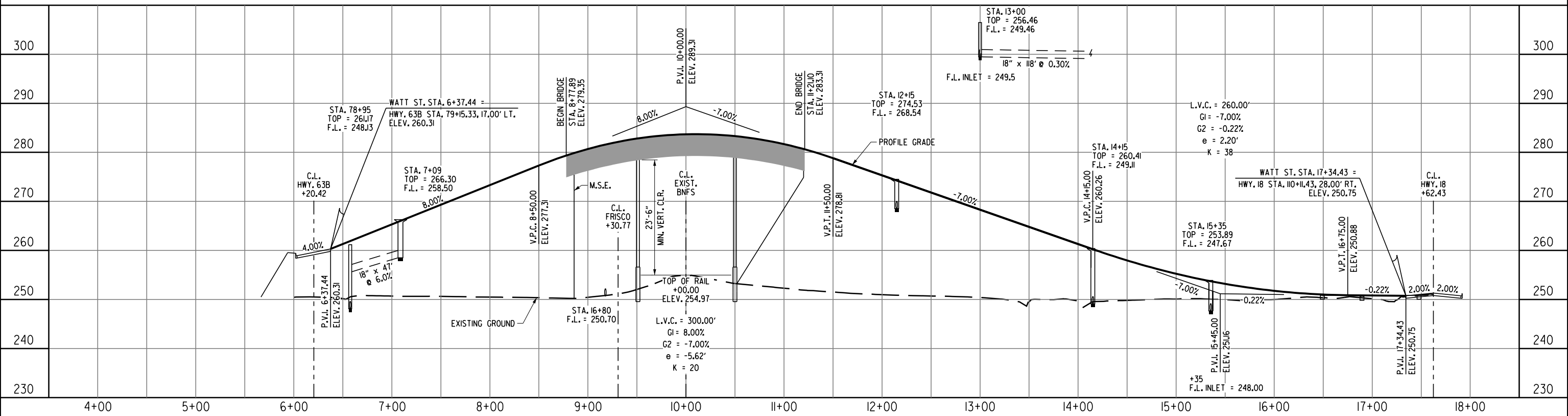
REFER TO SURVEY CONTROL DETAIL SHEETS FOR HORIZONTAL AND VERTICAL CONTROL DATA.

STA. 6+36.93 BEGIN TRANSITION (MATCH HWY. 63B) APPROX. (0.002 %)
 STA. 6+86.93 END TRANSITION (0.020 %)
 STA. 16+84.43 BEGIN TRANSITION (0.020 %)
 STA. 17+34.43 END TRANSITION (MATCH HWY. 18) APPROX. (0.002 %)
 SUPER ROTATED ABOUT C.L. WATT ST.

90% SUBMITTAL
 PRELIMINARY FOR REVIEW ONLY
 SHAHRIAR AZAD, P.E., 12404
 APRIL-2017

DATE REVISED	DATE FILMED	DATE REVISED	DATE FILMED	FED. RD. DIST. NO.	STATE	FED. AID PROJ. NO.	SHEET NO.	TOTAL SHEETS
				6	ARK.			
JOB NO. 100824							127	346
PLAN & PROFILE								

LEFT SIDE OF WATT ST.



RIGHT SIDE OF WATT ST.

