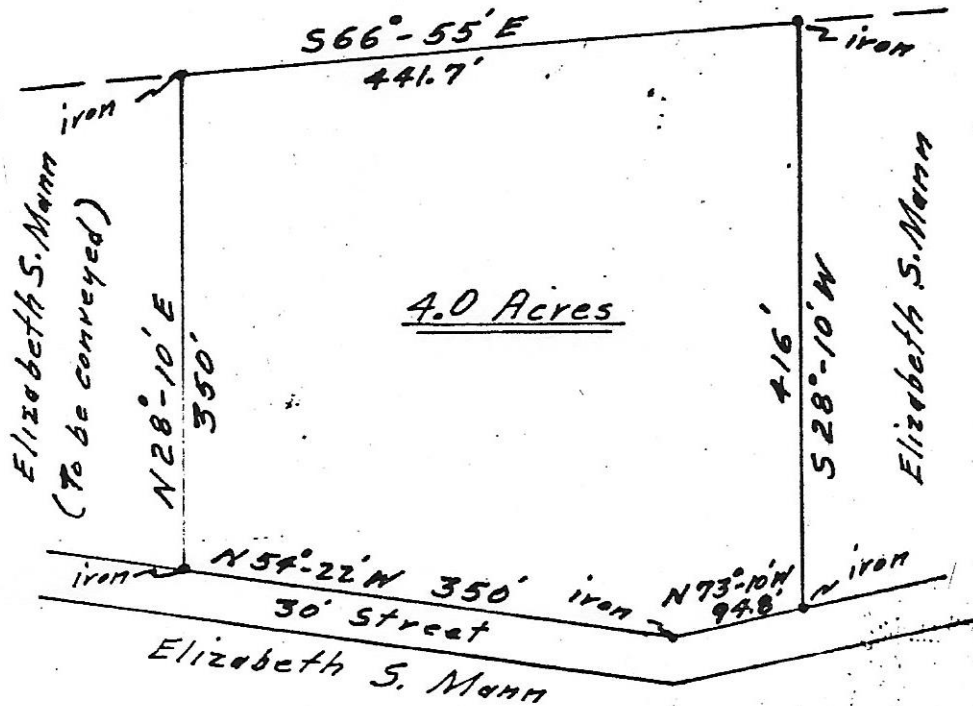


FILED

Sadie S. Rabb
Aug 15 11 05 AM '73
CLERK OF COURT
E. F. CONNOR
FAIRFIELD COUNTY, S. C.



FAIRFIELD COUNTY
SOUTH CAROLINA

Plot of 4.0 Acres Parcel to be conveyed to
Otis Le Grand from Elizabeth S. Mann.

Scale: 1"=100'
August 10, 1973

E. L. Duggins
Reg. Land Surveyor # 3489