

ALDERFER
AUCTION
AUCTION | APPRAISAL | DOWNSIZING



FINE & DECORATIVE ARTS AUCTION

Thursday, December 7, 2017 | 12:00 Noon

\$25



Front Cover: 3373

Inside Front Cover (Clockwise from top right): 3082, 3129, 3057, 3067, 3192, 3163, and 3293

AUCTION DETAILS

Fine & Decorative Arts Auction

Thursday, December 7th at 12:00 Noon
Bid Live at Alderfer Auction & Online at
AlderferAuction.com

Preview:

Saturday, December 2nd from
9:00AM – 12:00 Noon

Monday, December 4th from
9:00AM – 4:00PM

Tuesday, December 5th from
9:00AM – 4:00PM

Wednesday, December 6th from
9:00AM – 4:00PM

Thursday, December 7th at 8:00AM

Inquiries:

AlderferAuction.com

FineArt@AlderferAuction.com

ConditionReport@AlderferAuction.com

215.393.3000 Phone

❖ Indicates lot is pictured in catalog.

INVITING FINE & DECORATIVE ART CONSIGNMENTS
FOR THURSDAY, MAY 24, 2018



Like Us at @AlderferAuction

Members of: NAA & PAA; Designations CAI, MPPA & CES; USPAP Compliant.

AY002260



Collector's Online Only Auction Wednesday, December 6th Bid Now Through Close at 8:00PM

Offering an eclectic mix of porcelain, glass, art, jewelry, clocks and furniture with a broad appeal to the emerging and seasoned collector. This event will be sold Online Only, all items will be sold without reserve.

**Inviting consignments for our next
Collector's Auction March 2018.**

Discovery Art Auction

Thursday, December 7th at 9:00AM

Live at Alderfer Auction

Over 250 works of art selling without reserve including 19th, 20th and 21st century artists working in oil, water colors and works on paper. Many works by listed lesser known artists, works needing definitive attribution and some in need of restoration or framing.

501 FAIRGROUNDS RD., HATFIELD, PA 215.393.3000

PREVIEW ONLINE AT ALDERFERAUCTION.COM OR

LIVE AT ALDERFER AUCTION





3002

3001

Grouping of French Revolution and Napoleonic Autographs/Documents

Grouping of French Revolution and Napoleonic era documents/autographs including;

1. Clipped autograph of Bon-Adrien Jeannot de Moncey (1754-1842) French Marshal under Napoleon. Clip measures 1.25" x 2.5".
2. ALS of Edouard Thomas Burgues de Missiessy (1756-1837) French Admiral under Napoleon. 1pp manuscript letter dated May 25, 1813 from on board the ship Charlemagne to the Minister of Finance. Letter measures 12.5" x 8".
3. ALS of Sextius Alexandre Francois de Miollis (1759-1828) General under Napoleon. 1pp letter from Italy dated in the 9th year of the Republic. Letter measures 9.25" x 7".
4. ALS of Jacques Marie Armand Guerry de Beauregard (1783-1869) Politician and personality. 9pp letter dated 8 February 1855 to Louis Belmontet regarding aid to Napoleon III and his loyalty to Napoleon I. Letter measures 14.25" x 9.5".
5. ALS of Count E.P. Montesquieu (?-?) General under Napoleon. 1pp letter dated 1833 re; business matters. Letter measures 7.75" x 6.25".
6. LS of Philippe de Noailles, duc de Mouchy (1715-1794) Marshal under King Louis XVI and guillotined during the French Revolution. Letter, 1pp, dated August 18, 1779 to Antoine de Sartine regarding military matters. Letter measures 12.75" x 8".
7. ALS Gabriel-Louis-Francois de Neuville (1731-1794) French soldier and Deputy of the Third Estate, guillotined during the French Revolution. Letter, 1pp, dated January 28, 1790 regarding military matters and a deserter. Letter measures 13.5" x 8.5".
8. ALS and clipped signature of Nicolas Charles Oudinot, 1st Comte Oudinot, 1st Duc de Reggio (1767-1847) Marshal under Napoleon. Letter, 1pp, dated January 19, 1814 regarding personal matters. Letter measures 12" x 8" and clip measures 2" x 4.5".
9. ALS of Pierre-Francois Palloy (1755-1835), French builder and architect and demolisher of the Bastille. Letter, 3pp, dated October 29, 1797 regarding personnel matters. Letter measures 7.25" x 4.5".
10. LS of Jules-Francois Pare (1755-1819) French politician. Letter, 1pp, dated 1793 regarding military equipment. Letter measures 9.25" x 7.25".
11. LS Colonel Pepin (?-?) French soldier under Napoleon. Letter, 1pp, dated 1805 related to military matters.
12. Jerome Petion de Villeneuve (1756 -1794) French writer and politician who served as the second Revolutionary mayor of Paris, from 1791 to 1792. Letter/manuscript document, 1pp, dated March 19, 1792 regarding political matters and signed by Villeneuve as Mayor of Paris. Letter measures 12.5" x 8" and is accompanied by engraving.
13. LS of Jean-Charles Pichegru (1761-1804) French general of the Revolutionary Wars. Letter, 1pp, dated October 1795 regarding military matters. Letter measures 13.5" x 8.25".
14. LS of Jules Auguste Armand Marie, Count of Polignac (1780-1847) French statesman and Royalist. Letter, 1pp, dated June 6, 1814 regarding political matters. Letter measures 8.5" x 7".
15. DS of Pierre Louis Prieur (1756-1827) French lawyer and Revolutionary politician. Letter, 1pp, dated 1793 regarding naval matters. Document measures 13" x 7". Much of this lot appeared as Lot#10 of the Napoleonica Sale held 19 May 1998, at Christie's in New York City.

800-1200

HISTORICAL

❖ 3002

Grouping of French Revolution and Napoleonic Autographs/ Documents

Grouping of French Revolution and Napoleonic era documents/ autographs including;

1. LS of Andre Massena (1756-1817) French Marshal under Napoleon. Letter, 1pp, dated 1798 (7th year of the Republic) regarding military matters. Letter measures 8.75" x 7.25".
2. DS of King Louis XVI (1754-1793) French king guillotined during the French Revolution . Document, 1pp, dated September 6, 1790 regarding military appointment. Letter measures 14" x 9.25" with tear at top.
3. ALS of Pierre-Simon Laplace (1749-1827) influential French scholar. Letter, 1pp, dated January 26, 1819 regarding scientific matters. Letter measures 7.5" x 4.5".
4. ALS of Jean Joseph Humbert (1755-1823) French general under Napoleon. Letter, 3pp, dated May 14, 1794 regarding military matters of the Army of the Alps. Letter measures 9.5" x 7.5".
5. LS of P. Mannet (?-?) Procurator of Paris Letter, 1pp, no date regarding withholding of a decree. Letter measures 9.5" x 7.5".
6. LS of Jean Baptiste Kleber (1753-1800) French General under Napoleon. Letter, 1pp, dated 1796 regarding military matters. Letter measures 9" x 7".
7. LS of Louis Augustin Lamy d'Hangest (1731-1819) French general during the French Revolution and under Napoleon. Letter, 1pp, dated 1803 regarding military matters. Letter measures 12.5" x 7.75".
8. ALS of Emmanuel Grouchy (1766-1847) French marshal under Napoleon. Letter, 3pp, dated Philadelphia, January 18, 1817 regarding personal and financial matters. Letter measures 8" x 10".
9. LS of Francois d'Avrange of Haugeranville (1745-1823) French general during the French Revolution and under Napoleon. Letter, 1pp, dated July 13, 1810 regarding military matters. Letter measures 12" x 8".
10. ALS of Gabriel Marie Joseph, comte d'Hedouville (1755-1825) French general under Napoleon and diplomat. Letter, 1pp, dated 1796 to the Minister of War regarding military matters. Letter measures 12.5" x 8".
11. ALS of Jean Baptiste Jourdan (1762-1833) French marshal under Napoleon and diplomat. Letter, 1pp, dated 1799 to the Minister of War regarding political matters, as well as an undated clip signature. Letter measures 8.25" x 6.75" with clip measuring 1.5" x 3.25". Sold with period portrait.
12. DS of Bernard Germain de Lapepe (1756-1825) French naturalist. Document, 1pp, dated 1808 regarding Legion of Honor bestowment signed by Lapepe as Grand Chancellor of the Legion of Honor . Letter measures 12.5" x 8".
13. LS of Pierre Antoine Laloy 1749-1846) French politician who was a President of the National Convention. Document, 1pp, dated 1799 regarding revolutionary matters. Letter measures 12" x 7.5".
14. LS of Jacques Alexandre Bernard Law, marquis de Lauriston (1768-1828) French general under Napoleon. Letter, 1pp, dated 1809 regarding military matters. Letter measures 9.5" x 7.5".
15. LS of Antoine Marie Chamans, comte de Lavalette (1769-1830) French general and politician under Napoleon. Letter, 1pp, dated May 12, 1813 regarding political matters. Letter measures 9" x 7.5".

16. LS of Francois Joseph Lefebvre (1755-1820) French marshal under Napoleon. Letter, 1pp, dated May 27, 1818 regarding personal matters as well as a clip signature. Letter measures 10" x 8" with clip measuring 1.5" x 2.75".
17. ALS of Etienne Nicolas Lefol (1764-1840) French general in the French Revolution and under Napoleon. Letter, 3pp, dated February 23, 1808 regarding military matters. Letter measures 9.5" x 7.5".
18. ALS of Jacques Laffitte (1767-1844) French banker. Letter, 2pp, dated August 25, 1826 regarding financial matters. Letter measures 10" x 8". This lot appeared as Lot#11 of the Napoleonica Sale held 19 May 1998, at Christie's in New York City.

800-1200

3003

Grouping of French Revolution and Napoleonic Autographs/ Documents

Grouping of French Revolution and Napoleonic era documents/ autographs including;

1. ALS of Jean Baptiste Cavaignac (1762-1829) French politician and statesman. Letter, 2pp, dated 1814 regarding personal matters. Letter measures 9" x 7.25".
2. LS of Jean-Baptiste Jules Bernadotte (1763-1844) French marshal under Napoleon and eventual King of Sweden and Norway. Letter, 1pp, dated November 12, 1805 regarding financial matters. Letter measures 11.5" x 8".
3. Pair of DS of Lucien Bonaparte (1775-1840) French statesman and brother of Napoleon Bonaparte. Documents, 1pp each, dated August 13, 1797 and September 3, 1803 one regarding military matters the other political matters. Letter measures 7.25" x 9" the other 8.5" x 7".
4. ALS of Pierre de Ruel, marquis de Beurnonville (1752-1821) French general under Napoleon and eventual marshal of France. Letter, 2pp, dated January 26, 1797 regarding military matters. Letter measures 12.5" x 8".
5. ALS of Pardoux Bordas (1748-1842) French politician. Letter, 1pp, dated November 23, 1796 regarding military matters. Letter measures 8" x 6.5".
6. LS of Claude-Francois Bertrand Boucheporn (1741-1794) French politician guillotined in 1794. Letter, 1pp, dated February 19, 1783 regarding political matters. Letter measures 8.5" x 6.5".
7. LS of Jean Baptiste Noel Bouchotte (1754-1840) French governmental minister. Letter, 1pp, dated 1793-4 regarding military matters (signed in text). Letter measures 12.5" x 8".
8. ALS of Pierre Bouvenot (1748-1833) French politician. Letter, 2pp, dated April 8, 1796 regarding political matters. Letter measures 8.5" x 6.75".
9. ALS of Louis Antoine Fauvelet de Bourrienne (1769-1834) French diplomat. Letter, 1pp, dated 1810 regarding personal matters. Letter measures 7" x 4.5".
10. DS of M. J. Boutillier (?-?) French soldier. Document, 2pp, dated September 26, 1794 regarding military transportation. Letter measures 15" x 9.25".
11. Pair of LS of Pierre Augereau (1757-1816) French marshal under Napoleon. Pair of letters, both 1pp, dated January 16, 1810 and April 27, 1814 regarding military matters. Letters measures 12.5" x 8.5" and 9.25" x 6.75".
12. LS of Louis Baraguey d'Hilliers (1764-1813) French general under Napoleon. Letter, 2pp, dated October 4, 1795 regarding civil unrest and civilians begging for bread. Letter measures 9" x 7.25".
13. LS 2pp, dated 1800 regarding administrative issues for the Compagnie Bellesme. Letter measures 12.5" x 9".

14. LS of Jacques Alexandre Francois Allix (1768-1836) French general under Napoleon. Letter, 1pp, dated October 23, 1800 regarding military matters. Letter measures 9.5" x 7".
15. LS of J. C. Charbonner (?-?) French politician and revolutionist. Letter, 1pp, dated March 2, 1795 regarding political matters. Letter measures 9.5" x 7.5". Much of this lot appeared as Lot#13 of the Napoleonica Sale held 19 May 1998, at Christie's in New York City.

800-1200

3004

Autographs (2) of Lord Palmerston

Autograph of Henry John Temple, 3rd Viscount Palmerston (1784-1865), twice Prime Minister of the United Kingdom. LS, 1pp dated April 22, 1820 regarding reduction of allowance for Adjutant William Henderson, of the 1st Chester Local Militia. Document signed by Palmerston as Secretary of War. Sold with clip signature of Palmerston. Letter measures 12.5" x 8" exhibiting folds. Clip measures 2" x 4.5".

100-200

3005

Autograph of English King William IV

Autographed Document Signed (ADS) by King William IV (1765-1837) King of the United Kingdom of Great Britain and Ireland and King of Hanover (1830-1837) being a commission as a lieutenant for Arthur Wrightman in Princess Charlotte of Wales and Hertfordshire Regiment of Foot (49th Regt of Foot) dated June 10, 1831. Pre-printed with manuscript fill-ins vellum document is signed by William at upper left and measures 9.5" x 13.5" and exhibits toning and some lightness to ink with some manuscript entries.

100-200

3006

Autograph of English Queen Victoria-Boxing Related

Autographed Document Signed (ADS) by Queen Victoria (1819-1901) Queen of the United Kingdom of Great Britain and Ireland (1837-1901), being a license enabling Herbert Slade to wear the insignia of the Siamese Order of the White Elephant, third class, dated June 14, 1900. Pre-printed with manuscript fill-ins paper document (3pp) is signed by Victoria at upper left of first page and measures 13" x 8.25" and exhibits toning and folds. Herbert Augustus Slade (1851-1913), was a famed New Zealand boxer of Irish and Maori descent, who fought John L Sullivan for the heavyweight championship of the world in 1883.

300-400

3007

Autograph of English King George V

Autographed Document Signed (ADS) by King George V (1865-1936) King of the United Kingdom of Great Britain and Ireland (1910-1936) being a license enabling Hugh Fraser to wear the insignia of the Egyptian Order of the Nile, third class, dated June 20, 1919. Pre-printed with manuscript fill-ins paper document (3pp) is signed by George V at upper left of first page and measures 13" x 8.25" and exhibits toning and folds. Hugh Fraser was the Director of Lands, for the Sudanese government. Document is accompanied by letter to Fraser from the Foreign Office dated September 23, 1919 conveying license.

100-200

3008

Autograph of English King George V

Autographed Document Signed (ADS) by King George V (1865-1936) King of the United Kingdom of Great Britain and Ireland (1910-1936) being a license enabling George Hollingsworth Hughes to wear the insignia of the Egyptian Order of the Nile, Commander grade, dated March 10, 1922. Pre-printed with manuscript fill-ins paper document (3pp) is signed by George V at upper left of first page and measures 13" x 8.25" and exhibits toning and folds. George Hollingsworth Hughes (1876 - 1932), Public Prosecution, Egyptian Court of Appeal and a British subject involved with the Egyptian Ministry of Justice. Document is accompanied by a letter to Fraser regarding conveying the license as well as 5 additional letters regarding the awarding of the Order of St. Michael and St. George to Hughes.

100-200

3009

Autographs (3) of English King George V

Autographed Documents Signed (ADS) by King George V (1865-1936) King of the United Kingdom of Great Britain and Ireland (1910-1936) being a licenses enabling John Harris Heal to wear the insignia of;

1. The Order of the White Elephant, third class, dated August 17, 1917.,
 2. The Order of the White Elephant, third class, dated November 15, 1916., and
 3. The Order of the Crown of Siam, dated May 5, 1913.
- All documents are pre-printed with manuscript fill-ins paper document (3pp) is signed by George V at upper left of first page and measures 13" x 8.25" and with all exhibiting toning and folds. John Harris Heal was a metallurgist and Inspector General in the Department of Mines for the Royal Siamese government. Document is accompanied by 3 letters to Heal regarding conveying the licenses as well as an award document for Order of the White Elephant, third class in original envelope. Document measures 15" x 9.75" and exhibits folds and toning.

300-400

3010

Document Archive -British Admiral Mawbey

Grouping of documents related to the career of Admiral Henry Lancelot Mawbey (1870-1933), British naval officer serving in World War I and other stations. Grouping includes;

1. Document appointing Mawbey as Commander of the Royal Victorian Order dated March 16, 1922 measuring 13" x 8" (2pp) and autographed by King George V (1865-1936).
2. Letter on Buckingham Palace letterhead dated July 25, 1922 re; particulars about statutes of the Royal Victorian Order. Letter measures 13.25" x 8.25" and is signed by the Registrar of the RVO, Francis Morgan Bryant (1859 - 1938).
3. Document appointing Mawbey as Companion (Civil Division) of the Order of the Bath dated June 5, 1920 measuring 13" x 8" (2pp) and facsimile signed by King George V.

200-300

HISTORICAL



❖ 3011

Royal Navy Ship Log-Crimean War

Ship log book kept by Royal Navy crewman Clavell W.S. Blount for ships he served on between the HMS Odin, HMS Victory, and the HMS Actaeon for the period covering October 7, 1855 to April 21, 1857 in 324 pages. During the period that Blount served on the HMS Odin, a steam-powered first-class paddle frigate of the British Royal Navy mounting 16 guns the ship served in the Crimea and actively participated in naval operations against the Empire of Russia. Upon returning to England Blount served for a short time on the HMS Victory, a 104-gun first-rate ship of the line of the Royal Navy that gained fame as Lord Nelson's flagship during the Napoleonic Wars. Blount detailed his short service of training and drill. The final section of the logbook details the particulars of the HMS Actaeon, a 26-gun sixth-rate frigate of the Royal Navy that was converted to a survey ship. During the time of Blount's service the Actaeon sailed from Portsmouth, England to Madeira, to Rio de Janeiro, and finally to the Cape of Good Hope. The leather bound log book measures 9" x 8" and contains 162pp (cruise of the HMS Odin from October 7, 1855 to August 7, 1856), 14pp (moored on the HMS Victory from August 8, 1856 to September 11, 1856), and 148pp (cruise of the HMS Actaeon from September 12, 1856 to April 21, 1857). Book contains extremely detailed entries and features a tipped in frontice page showing a pencil sketch of the Viking god Odin with the reverse of that page featuring a pen/ink and watercolor of a side view of the HMS Odin. Page entries are legible with several pages exhibiting some slight damage with some loss.

1000-1500

3012

Manuscript Diary/Cruise Book -1870s by US Navy Surgeon

A manuscript diary/cruise book kept by United States Navy surgeon Alfred M Owen from November 26, 1870 to July 7, 1871. The entries were kept while Owen was serving on the USS Ossipee, a wooden, screw sloop of war. The lengthy entries describes the ships voyage and Owen's observations in travels from San Francisco to various areas of South America. Entries include technical data (longitude, latitude, temperature, sea conditions etc.) but also include sights and events on ship. Book includes some tipped in albumin photographs of ships, two loose intricate manuscript maps (1.) Track of the USS Ossipee near California and Mexico measuring 7.75" x 7". 2.) Map of world with various cruises measuring 6.5" x 10.5". Book further contains some small pen and ink doodle/sketches as well as tipped in trimmed Navy general orders. Owen would die of yellow fever at the US Navy hospital at Pensacola, Florida on August 22, 1883. His wife would die at the same hospital on August 29, 1883 leaving behind 4 children. Contained in the book is a small sheet regarding funds being raised to support the children. The book measures 8.5" x 7" and features "No. 2 Ossipee" in white on cover over Owen's three letter monogram. Pensacola

400-600

3013

Cartoon and Autograph of Clare Briggs

Cartoon by Clare Briggs (1875-1930), noted early 20th century cartoonist, lecturer, and film producer. Cartoon sketch of boy and dog looking over fence signed "Sincerely yours Briggs, NY Tribune, 24". Sheet measures 7" x 6" and exhibits some folds.

100-200

3014

US Army Uniform Folio-1908

Portfolio titled "Uniform of the Army of the United States October 1, 1908. Compiled by the authority of the Secretary of War under the supervision of Brigadier General J.B. Aleshire, Quartermaster General, U.S.A., U.S. Army Quartermaster Department". Portfolio of 126 color plates (plates present number up to 144, however 18 plates were deleted upon publication because they depicted obsolete uniforms and or parts of uniforms). Binding of portfolio is dark red 3/4 leather over black cloth slip case. Plates measure 9" x 11.5".

300-400



❖ 3015

Early 20th Century Photograph Album-China

Large early 20th century (Pre-World War I) photograph album of German civilian documenting their time in China as well as travels including Russia, Norway and other locations. Lacquer covered album measures 11" x 14" x 2" and features mother of pearl inlaid image of a peacock. Album contains 263 images measuring 3.25" x 4.25", 1 large (6.5" x 11") photograph of a costume party and 5 photographs measuring 3.25" x 5.5" of ships. Contained in rear of album is a sheet measuring 9" x 8.25" exhibiting a ink and pencil itinerary. Events and scenes included in album include; sailing ships, flood on the Yangtze river, Typhoon of 1905, Shanghai-Nanking Railway in 1907, military ships, military troops, maritime accidents, and parades. Of special note are 12 photographs showing an American floatplane demonstration held on November 24, 1912 at Woosung. Many photographs present extensive ink descriptions in German on pages detailing particulars of images.

400-600

3016

19th Century German Naval Photo Album-Far East

Late 19th century photograph album containing various photographs of German naval personnel and ships as well as scenes of various ports of call. Album contains 100 silver gelatin photographs measuring 3.5" x 4.5" in a folding double-sided album. Images include China, Cambodia and other locales. The only ship identification is the SMS Leipzig. Some photographs exhibit some slight fading. Lacquer cover album measures 6" x 8" x 2" and exhibits a Japanese scene with women carrying parasols (some damage to cover). Several photographs exhibit tears with one page binding separated.

200-300

HISTORICAL

3017

Grouping of 19th Century Presidential Campaign Medalettes

1. Presidential Campaign of 1868 for Grant. Obverse: Bust of Ulysses S. Grant facing forward, the legend reading: "GENERAL U.S. GRANT 1868". Reverse: Legend reads: "I PROPOSE TO FIGHT IT OUT ON THIS LINE IF IT TAKES ALL SUMMER". 28mm holed at top. Medal reference: DeWitt-Sullivan USG 1868-30.
2. Presidential Campaign of 1852 for Scott. Obverse: Bust of Winfield Scott facing left with legend reading: "MAJ. GENERAL WINFIELD SCOTT". Reverse: Legend reading: "CHIPPEWA/ LUNDYS LANE/ CERRO GORDO /CONTRERAS/ CHURUBUSCO/ CHAPULTEPEC /MEXICO". 26mm holed at top. Medal reference: DeWitt-Sullivan WS 1952-13.
3. Presidential Campaign of 1856 for Fillmore. Obverse: Bust of Millard Fillmore facing right with legend reading: "MILLARD FILLMORE FOR THE WHOLE COUNTRY". Reverse: Large eagle with legend reading: "UNITED STATES OF AMERICA". 28mm. Medal reference: DeWitt-Sullivan MF-1856-4.
4. Presidential Campaign of 1840 for Harrison. Obverse: Bust of William Henry Harrison facing left with legend reading: "MAJ GENL W.H. HARRISON BORN FEB 9 1773". Reverse: Cabin with legend reading: "THE PEOPLES CHOICE IN THE YEAR 1841". 24mm holed at top. Medal reference: DeWitt-Sullivan WHH-1840-56.
5. Presidential Campaign of 1840 for Harrison. Obverse: Bust of William Henry Harrison facing left with legend reading : "MAJ GENL W.H. HARRISON BORN FEB 9 1773". Reverse: Cabin with legend reading: "THE PEOPLES CHOICE IN THE YEAR 1840". 24mm holed at top. Medal reference: DeWitt-Sullivan WHH-1840-unknown.
6. Presidential Campaign of 1852 for Pierce. Obverse: Bust of Franklin Pierce facing right with legend reading: "GEN FRANK PIERCE THE STATESMAN & SOLDIER". Reverse: Legend reading: "FOR PRESIDENT GEN. FRANK PIECE OF NEW HAMPSHIRE. FOR VICE PRESIDENT WILLIAM R. KING OF ALABAMA". 26mm holed at top. Medal reference: DeWitt-Sullivan FP 1852-5.
7. Presidential Campaign of 1888 for Harrison. Obverse: Bust of Benjamin Harrison facing left with legend reading: "GEN BENJAMIN HARRISON 1888". Reverse: Legend reading: "REPUBLICAN CANDIDATE FOR PRESIDENT". 22mm holed at top. Medal reference: DeWitt-Sullivan bh-1888-unknown.
8. Presidential Campaign of 1840 for Harrison. Obverse: Bust of William Henry Harrison facing left with legend reading: "MAJ GENL W.H. HARRISON 1841". Reverse: eagle with legend reading: "GO IT TIP -- COME IT TYLER". 26mm holed at top. Medal reference: DeWitt-Sullivan WHH-1840-28.
9. Presidential Campaign of 1840 for Harrison. Obverse: Bust of William Henry Harrison facing left with legend reading: "MAJ GENL W.H. HARRISON BORN FEB 9 1773". Reverse: Cabin with legend reading: "THE PEOPLES CHOICE IN THE YEAR 1840". 24mm holed at top with significant wear. Medal reference: DeWitt-Sullivan WHH-1840-unknown.

300-500

3018

British Medal Commemorating the Battle of Toulouse

Bronze Napoleonic medal commemorating the 1814 Battle of Toulouse. Obverse of medal features helmeted bust with text "BRITANNIA" at left with "J. MUDIE D.". Reverse of medal features view of Jean-de-Dieu Soult holding French fleurs-de-lis royalist flag in front of trophies of war with text "BATTLE OF TOULOUSE --- X. APRIL MDCCCIV----BRENET". Medal measures 40mm. Medal reference Bramsen 1384.

100-200

3019

Silver Zeppelin Medal Commemorating 1st Round the World Flight

Silver medal issued by the German Weimar Republic commemorating the first round the world flight of the airship Graf Zeppelin. Obverse features text "ZEPPELIN DER SCHOPFER, ECKENER DER FUHRER, DURR DER ERBAUER" showing busts of Ferdinand Graf von Zeppelin, Hugo Eckener und Ludwig Durr. Reverse features text "I. WELTFAHRT DES LUFTSCHIFFS >> GRAF ZEPPELIN << 1929" showing a globe marked with the destinations for the LZ-127's voyage with dates. Rim marked "PREUSS. STAATSMUNZE, SILBER 900 FEIN". The medal measures 36 mm in diameter, weighs 24.97 grams and was designed by O. Glockler. Medal reference Button 243 and Kaiser 511. Medal in uncirculated condition.

100-200

3020

Japanese Matchlock

Japanese Tanegashima (matchlock) gun from the Edo Period measuring 34.5" (barrel measures 22.75"). Gun presents brass and copper furniture with the silver image of a rabbit on right side of gun as well as several silver flowers. Iron barrel exhibits copper and brass inlaid images of a deer with tree limbs and leaves. Furniture of stock feature wave, rabbit, and floral designs.

500-800

3021

Pennsylvania Long Rifle

Pennsylvania percussion long rifle measuring 47" in length (31" barrel) featuring maple stock featuring cheek piece. Barrel and lock present no markings with rifle exhibiting small silver escutcheon plate on wrist of gun. Hammer exhibits some engraving and brass patchbox exhibits some star motifs. Wrist exhibits a repaired crack.

400-600



3022



❖ 3022

Pennsylvania Long Rifle

Pennsylvania percussion long rifle by Moll measuring 58" in length (42.5" barrel) featuring tiger maple stock featuring cheek piece with German nickel silver images of a dog chasing a deer. Barrel marked "MOLL" and lock marked "PARKER & Co" with rifle exhibiting small German nickel silver escutcheon plates to lock barrel onto rifle (one damaged). Brass patchbox exhibits line engraving. The Moll family were noted gunsmiths in Allentown, Pennsylvania in the 18th and 19th century. Long rifle is accompanied by 19th century powder horn measuring 11.5" featuring rounded butt with staple type attachment (some rust to staple) and turned screw plug with brass nozzle with additional wood stopper (replacement). Horn exhibits some cracks and scratches.

1000-1500

3023

Pennsylvania Percussion Pistol

Pennsylvania long barreled percussion pistol measuring 24" in length (18" barrel) featuring maple stock. Barrel and lock present no markings with wood of pistol featuring small brass tack design of tulip in pot (near lock on right side) and initials "LG" with stars on left side. Pistol exhibits some light pitting/rust and some degradation to strike area of hammer.

200-400

3024

US Model 1860 Staff & Field Sword

A 19th century United States model 1860, Staff and Field sword with rayskin/wire wrapped grip. Scabbard is nicked and presents brass drag and mounts. Ricasso marked "J.H. Wilson, Maker, Philada". Upper portion of blade features etched design of patriotic/floral design with "US". Blade exhibits some slight graying and several areas of slight rusting.

200-300

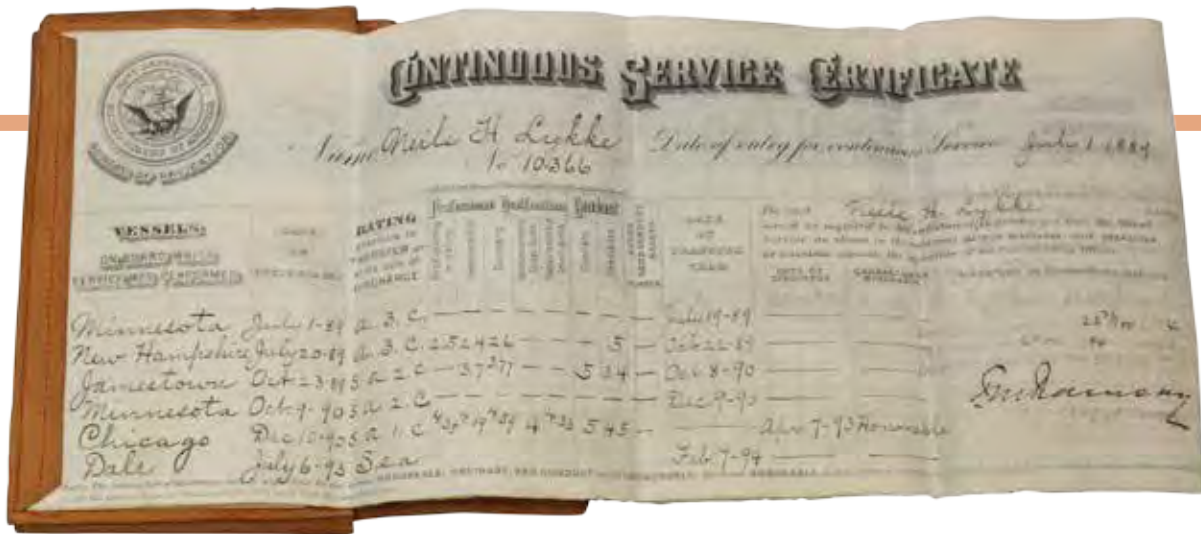
3025

British Canadian General Service Medal - Fenian Raid

British Canadian General Service Medal for Fenian Raid. Medal features "FENIAN RAID 1866" bar and is stamp lettered on edge "Pte J. Flood, 1st. P.W.R.". Medal exhibits evidence of light polishing and presents replacement ribbon. In all 16,668 Canadian General Service medals were awarded with 8,591 presenting "1866" clasps.

200-300

HISTORICAL



❖ 3026

Historically Significant Spanish American War Naval Medal Grouping

Important historically significant Spanish-American War U.S. Navy medal grouping of Seaman-Gunner Neils H. Lykke who served aboard the U.S. Navy Gunboat USS Gloucester during the Battle of Santiago de Cuba on July 3, 1898. Grouping includes;

1. US Navy Sampson medal with "USS Gloucester" bar. Medal is named on edge "NEIL H. LYKKE, SEA.GR."
2. U.S. Naval Campaign-West Indies Specially Meritorious Cross. Medal presents engraved reverse "NEIL H. LYKKE-SEAMAN GUNNER--RESCUING CREWS FROM AND IN CLOSE PROXIMITY TO BURNING SHIPS AFTER THE BATTLE OFF SANTIAGO CUBA JULY 3RD 1898". Medal exhibits some abrasions and wear to reverse.
3. US Navy Good Conduct medal engraved on verso " C.S.C No10366 NEILS H. LYKKE, U.S.S. NEW YORK, JULY 6, 1896".
4. Rare privately struck USS Gloucester silver medal engraved on verso "NEIL H. LYKKE-SEA GUNNER". This medal was struck by millionaire J.P. Morgan to be presented to the crew of the navy gunboat USS Gloucester which began life as Morgan's yacht the SS Corsair. Morgan sold the yacht to the US Navy in 1898 when the Navy needed vessels and it was refitted as a gunboat. The central part of the lower portion of this medal is a Spanish 5 Pesetas coin taken from a silver horde from one of the Spanish ships sunk during the battle.
5. United Spanish War Veteran Member Medal (type 1). Medal measures 3.5" x 1.5". 6.) United Spanish War Veteran Member Medal (type 3) numbered on verso of suspension bar/eagle "C2286". Medal measures 4.5" x 1.75". 7.) Leather bound booklet containing vellum pages (Continuous Service Certificate, Certificate of Seaman Gunner and others) detailing Lykke's naval service from 1889 thru 1896. Booklet opened measures 6" x 13.75".

5000-8000

3027

Spanish American War Dewey Campaign Medal-Exhibition Copy

Exhibition copy of the Spanish American War Admiral Dewey medal awarded for participation in the Battle of Manila Bay. Medal measures 45mm and was designed by noted sculpture Daniel Chester French and struck by Tiffany & Company. Medal features high relief bust portrait of Admiral Dewey with reverse featuring a barechested sailor sitting on naval gun. Edge of medal features stamped text "FOR EXHIBITION AT THE PARIS UNIVERSAL EXPOSITION 1900". Medal features remnants of gilt.

1500-2500

3028

US Spanish American War/China Relief Medal Group-ID'ed

Spanish-American War/China Relief medal grouping of Corporal Eugene A. Sulzback who served in Company B, of the 15th U.S. Infantry and Company B of the 2nd Pennsylvania Volunteer Infantry. Grouping includes;

1. US Army medal for the Army of Occupation Military Government of Cuba presenting edge numbering "M.No.725". Medal lacks broach.
2. Spanish American War Spanish Campaign Army Service Medal with full wrap broach presenting edge numbering "22465".
3. US Army medal for the China Relief Expedition 1900-1901 presenting edge numbering "M.No.290". Medal presents full wrap broach that has become separated from worn ribbon.
4. Imperial Order of the Dragon US medal in bronze. Medal is missing broach and presents stamped numbering "589" on verso.
5. Old Guard Infantry Corps National Guards medal in bronze. Grouping is accompanied by various Xerox copies of research regarding Sulzback and his military service.

600-800

❖ 3029

Spanish American War/WWI Naval Medal Grouping

Spanish-American War/World War I U.S. Navy medal grouping of Ensign John Rufus Edie (1870-1946) who served aboard the U.S. Navy torpedo boat USS Ericsson during the Battle of Santiago de Cuba on July 3, 1898. Grouping includes;

1. US Navy Sampson medal with "USS ERICSSON" bar. Medal is named on edge "ENSIGN JOHN RUFUS EDIE".
2. U.S. Naval Campaign-West Indies Specially Meritorious Cross. Medal is later re-issue.
3. United States Navy West Indies campaign medal with edge number "341".
4. French Legion of Honor officer medal.
5. Venezuela, Order of the Liberator, Officer grade medal with some rusting to pins.
6. Venezuela, Order of the Liberator, Officer. Grade medal lacking pin.
7. Miniature medal bar featuring above 5 medals plus WWI Victory medal with "FRANCE" bar. Medals housed in leather covered wood medal case measuring 4.5" x 6.5" x 1.5". Edie graduated the United States Navy Academy in 1890 and served in the Spanish American War and WWI finally attaining the rank of Captain. He is buried in Arlington National Cemetery.



1500-2500

HISTORICAL



❖ 3030

US Navy Medal Grouping-China Relief 1901

United States medal grouping of Lieutenant Commander Pope Washington (1872-1935), United States Navy. Washington was a Naval Cadet (engineer division) stationed on the USS Maine when it exploded in Havana Harbor in 1898 but was on shore leave in Havana when the event occurred. He later saw service in the Boxer Rebellion, the Philippine Insurrection and World War I, retiring in 1918. He died in 1935. Medal grouping includes;

1. US Navy West Indies Campaign medal. Medal is edge numbered "3543" and presents wrap-brooch (separated) and degradation to ribbon.
2. US Navy China Relief Expedition Campaign medal. Medal is edge numbered "143" and presents wrap-brooch with some splitting to ribbon, and features 1901 date in exergue.
3. US Navy Philippine Campaign medal. Medal is edge numbered "745" and presents a wrap-brooch with ribbon degradation/splitting.
4. World War I Victory medal. Medal presents wrap-brooch.
5. Photograph of Lt. Commander Pope Washington in US Navy full dress uniform wearing all above listed medals with exception of WWI medal. Photograph measures 5.25" x 3.5". The rare China Relief Expedition medal was issued to Pope Washington on November 9, 1908. It is one of only 400 issued.

1000-2000



❖ 3031

WWI Distinguished Service Cross -Family Group

United States World War I Distinguished Service Cross medal with accompanying family items related to recipient. Grouping includes;

1. Wrap-broach WWI period DSC with edge number "5886" housed in brown cardboard case with label on bottom "Distinguished Service Cross 5886". Box also contains 2-DSC pinback ribbons and 2-loose DSC ribbon pieces. Medal is not named, however research shows that medal #5886 was awarded to Corporal Ervin C. Sheffer (from York County, Pennsylvania) while serving in Company I, 38th Infantry Regiment, 3d Division, A.E.F. for actions in France on October 9, 1918. The citation for Sheffer's DSC reads: The Distinguished Service Cross is presented to Ervin C. Sheffer, Corporal, U.S. Army, for extraordinary heroism in action north of Cierges, France, October 9, 1918. In the attack on Hill 253, Corporal Sheffer was in command of an automatic rifle squad which was making an attack under enemy rifle and machine-gun fire on an enemy machine-gun nest. After the gunner had been killed, he seized the automatic rifle of the dead gunner and while rushing forward toward the nest was killed by machine-gun fire. The medal was awarded to Ervin's mother Mrs. Lillian Deckman in 1920.
2. Original mailing tag from War Department to Mrs. Lillian Deckman listing DSC #5886 on tag.
3. Pair of WWI dogtags on original cord for Herman F. Sheffer (Ervin's brother),
4. WWI 79th Infantry Division patch with attached WWI victory medal ribbon bar with three battle stars.
5. Small folded typed letter from Lt. H.C. Merritt (38th Infantry) to Herman Shaffer describing death of Ervin in battle. Letter exhibits some damage, medal box exhibits some edge separation, and dogtags exhibit some areas of corrosion.

1500-2500



❖ 3032

US WWI Distinguished Service Cross-Cased

United States World War I Distinguished Service Cross medal in original WWI period leather covered wood case with gilt impressed letters on lid "D.S.C.". Medal in case exhibits some separation/ splitting of ribbon and presents a full wrap broach with edge of medal presenting impressed number "800". Case bottom and interior exhibit some water damage. Research indicates that cross #800 was issued to Private Henry Hiser, Company B, 136th Machine-Gun Battalion, 37th Division, A.E.F. for his actions on September 26, 1918. The citation for his medal reads: The Distinguished Service Cross is presented to Henry Hiser, Private First Class, U.S. Army, for extraordinary heroism in action near Avocourt, France, September 26, 1918. When the advance of his platoon was held up by fire from a hostile machine-gun nest, Private Hiser advanced alone ahead of the platoon, worked his way around the flank and rear, and single-handedly killed the officer in command, a gunner and captured 15 prisoners, thereby enabling his platoon to advance.

1000-2000

HISTORICAL

❖ 3033

US 19th/20th Century Medal Grouping

Grouping of 19th/20th century United States medal grouping belonging to Brigadier General T.F. Davis including;

1. Indian Wars campaign medal with wrap-brooch presenting rim number "No.73".
2. Medal for Service in the Spanish War with wrap-brooch presenting rim number "12067" and slight degradation to ribbon.
3. Army of Occupation Military Government of Cuba with wrap-brooch presenting rim number "No.8".
4. World War I Victory Medal with no bars and a wrap-brooch.
5. French Croix de guerre with star. Accompanied by World War I Victory medal with "AISNE, CHAMPAGNE-MARNE, AISNE-MARNE, DEFENSIVE SECTOR" housed in original box with interior typed note identifying medal to Captain Thomas H. Davis, 12th Field Artillery, 2nd Division AEF who was killed in action on July 21, 1918 and was the son of Brig Genl T.F. Davis. Medal accompanied by interior pull slip. Box lid presents manuscript inscription "Tom's Victory Medal No. 815450".

1200–1800





3034

❖ 3034

US WWI Silver Star Medal Grouping

United States World War I medal grouping including;

1. Silver Star medal named on verso "Kristian Ostergaard" and numbered on edge "5081". Medal manufactured by Bailey, Banks and Biddle, Philadelphia.
2. Service medal for the 2nd Division with enameled star and Indian head named on verso "Kristian Ostergaard".
3. World War I Victory medal with 5 bars (AISNE, AISNE-MARNE, ST. MIHIEL, MEUSE-ARGONNE, AND DEFENSIVE SECTOR).
4. New Jersey service in World War I medal (unnamed).
5. French medal for participation in the battle of St. Mihiel in 1918.
6. French Croix de Guerre medal with star on ribbon.
7. French medal for American participation in the battle of Chateau-Thierry in 1918.
8. French medal for participation at Verdun.
9. Felt World War I patch for the 2nd Division.
10. Croix de guerre fourragere for uniform.

800-1200

3035

US Philippine Insurrection Campaign Medal

United States Philippine Insurrection campaign medal (Army) with wrap-brooch presenting rim number "M.No.4212". Housed in original cardboard issuing box with label "Philippine War M 4212". Box measuring 2.75" x 1.5" x 0.5". Box also contains small "dog tag" measuring 1.2" in diameter with hand engraved text "Co. K, 28th Regt, Edw. M. Davis. USV".

200-300

3036

US Haitian Campaign Medal-Navy

United States Haitian campaign medal (Navy) with wrap-brooch presenting rim number "1028". Housed in original cardboard issuing box with printed title "Haitian Campaign" with label on bottom of box "514". Box measuring 4.5" x 2" x 0.5".

200-300

3037

US WWII Navy Cross

United States World War II period Navy Cross with dark finish commonly referred to as the "Black Widow" Navy Cross. Medal with ribbon bar is housed in issue box measuring 4.75" x 2.5" x 1.25". Cross and box in near mint condition.

300-500

LUXURY GIFTS



3038



3039



3040



3041



3042



3043

❖ 3038

Chanel Cavier Handbag

Vintage Chanel handbag. Cavier leather. Backpack style with dust jacket. Some outside leather discoloration. Authentication sticker in pocket. Very gently used. 12"h x 12"w

600-800

❖ 3039

Louis Vuitton Epi St. Jacques

Handbag Louis Vuitton black Epi St. Jacques handbag. Very gently used. 9.75"h x 15"w

300-500

❖ 3040

Louis Vuitton Amarante Monogram Vernis Bellevue GM Bag

Louis Vuitton Amarante Monogram Vernis Bellevue GM Bag. Very gently used. 10.5"h x 17.5"w

600-900

❖ 3041

Louis Vuitton Damier Ebene Wallet

Louis Vuitton wallet with box. Bi-Fold Damier Ebene. Very gently used. 4"h x 4.25"w

200-400

❖ 3042

Louis Vuitton Monogram

Canvas Popincourt Haut Bag Louis Vuitton Monogram Canvas Popincourt Haut Bag. Very gently used. 9.5"h x 10.5"w

500-800

❖ 3043

Louis Vuitton Manosque PM Handbag

Louis Vuitton Manosque PM with dust jacket. Very gently used. 7.25"h x 14.75"w

600-800

❖ 3044

Faberge Heart Enhancer Pendant. 18K Yellow Gold. Green Enamel. Limited Edition 35/500

19 x 20mm heart. Front features a gold floral design on green enamel. Reverse is polished gold, signed and numbered. 6.6gtw.

400-600

3045

18K Yellow Gold Bangle Bracelet

2 1/2" I.D. 4.9mm wide. 16.4gtw.

400-600

❖ 3046

N. Teufel. 14K Yellow Gold

Triple Motion Spinner Swinger Ring. Bailey, Banks & Biddle Size 8 3/4. 7.0gtw.

400-600

❖ 3047

14K White Gold Ring with Diamond Cluster. 1.50CTW

Features (1) 4mm round center Diamond, approx. 0.25ct and (32) 2.0 - 2.5mm round Diamonds approx. 1.25ctw. Size 7 1/2. 6.9gtw.

500-700

❖ 3048

18K White Gold Ring with Ruby and Diamonds

Features (1) 7.8 X 7.5mm cushion cut Burma Ruby, 2.36ct and multiple small round Diamonds, 1.00ctw, VS. Size 6 3/4. 10.8gtw.

600-800



3044



3046



3047



3048

JEWELRY



3049



3056



3050



3055



3057

❖ 3049

Platinum Ring with Diamonds

Eternity Band features (10) round Diamond accents, approx. .25ctw. Size 5 1/2. 10.0gtw.

300-400

❖ 3050

14K Yellow Gold Ring with Diamonds. 1.42CTW

Features (1) 5.6mm round brilliant cut Diamond, approx. 0.70ct, Clarity: I1 Color: IJ Cut: Fair make, flanked by (36) round brilliant cut channel set Diamonds, approx. 0.72ctw. Size 4 1/2. 5.0gtw.

1000-1500

3051

Mings 14K Yellow Gold Bracelet with Multiple Color Jade Cabochons

7 1/4" long with hook clasp and safety chain. Features (6) approx. 13 X 10mm oval Jade cabochons. 21.8gtw

400-600

3052

14K Yellow Gold Hinged Bangle with Lapis

7.8mm wide. 2 1/4" I.D. with safety chain. Features Lapis and etched gold. 28.5gtw.

200-300

3053

18K Yellow Gold Ring with Sapphire and Diamonds. ELO MWI

Features (1) 7 x 6mm oval blue Sapphire flanked by (26) round channel set Diamond accents, approx. .33ctw. Size 4 1/4. 6.1gtw.

200-400

3054

Platinum Filigree Brooch Bar Pin with Diamonds, .50CTW

2 1/2" long X 1/2" wide. Pin finding is Rhodium plated Gold. Features (1) 3mm round Diamond and (28) round Diamond accents, approx. .50ctw. 6.9gtw.

200-400

❖ 3055

Platinum Ring with 1.10CT Diamond and Sapphire Blue Stones. Platinum Band

Features (1) 6.64 X 6.96 X 4.20mm round old cut Diamond in a six prong setting, approx. 1.10ct, Clarity: SI Colour: JK, flanked by (6) channel set 1.0mm square cut blue synthetic stones. Size 5. Band: Size 5 1/4. 5.7gtw.

2000-3000

❖ 3056

18K Yellow Gold Floral Brooch with Enamel and Diamonds

Features (2) 4.20mm round Diamonds, approx. .70ctw, Clarity: VS Colour: HI. Stamped ITALY CORLETTA. 23.5gtw.

500-1000



3058



3059



3060



3061

❖ 3057
Platinum Ring with Diamond. 1.59CT Round with Baguettes
 Features (1) 7.20 X 7.00mm X under platinum, round brilliant cut Diamond, 1.59cts, Clarity: SI-2 Colour: JK Cut: Fair to Good, flanked by (2) Baguette Diamonds, 0.20ctw, Clarity: VS Colour: G. Size 5 1/2. 4.2gtw.
5000-6000

❖ 3058
14K White Gold Ring with Emerald and Diamonds
 Ring features (1) 12.0 X 7.0mm pear shape dark green Emerald with visible inclusions, approx. 3.00cts, (14) 2.6mm round Diamonds, approx. 0.84ctw and (16) 3.2mm round Diamonds, approx. 1.92cts, Clarity: VS-1 Colour: Hl. Size 7. 9.1gtw.
2000-5000

❖ 3059
14K White Gold Earrings with Emerald and Diamond
 Omega back post Earrings: 1 1/2" long. The pair features (2) 14.0 X 9.0mm pear shape dark green Emeralds with visible inclusions, approx. 6.0ctw, (44) round brilliant cut Diamonds, approx. 6.0ctw, Clarity: VS to I-1. 11.4gtw.
2000-5000

❖ 3060
Tiffany & Co. 14K Yellow and Rose Gold Brooch with Aquamarine and Sapphire
 Floral motif features (1) 15.00 X 11.07 X 7.60mm emerald cut medium blue Aquamarine, approx. 10.10cts, (2) 3.65 X 2.00mm blue Sapphires and (3) 2.40 X 1.90mm round blue Sapphires. 26.7gtw.
1200-1800

❖ 3061
14K Yellow Gold Brooch. Floral Basket with Gemstone Flowers
 1 1/2". Features multiple round Opal, Garnet, Sapphire, Emerald, Ruby and Turquoise. 11.2gtw.
200-300

JEWELRY



3062



3065



3066



3063



3067

3064





❖ 3062
14K Yellow Gold Ring with Citrine and Diamond

Features (1) 18 X 13 X 8.3mm pear shape Madeira Citrine flanked by (2) 2.4mm round Diamond accents. Size 6. 7.7gtw.

200-300

❖ 3063
18K Yellow Gold Bracelet with Citrine and Diamond

7 1/4" long with pressure tongue clasp and safety catch. Features (1) 15 X 11.8, (2) 14 X 11mm, (2) 13 X 10.2, and (2) 12 X 9.4- 9.7mm oval Madeira Citrine links alternating with (7) links each accented by (1) 2.2mm round Diamond. approx. .28ctw. 36.3gtw

1000-1500

❖ 3064
14K Yellow and Rose Gold Bracelet with Pearls

7" long X 7/8" wide. Features (14) 6.0mm Pearls. 65.9gtw

1200-1600

❖ 3065
14K Yellow, Green and Rose Gold Necklace. Pendant Slide with Rubies

18" long X 2.5mm wide yellow gold snake chain features a 7/8 X 1 1/8" green and rose gold pendant with multiple channel set princess cut Rubies.

20.6gtw.
400-600

❖ 3066
Platinum Ring with Emerald and Diamonds

Features (1) 6.4 X 5.9mm emerald cut Emerald flanked by (2) 7 X 3mm marquise and (2) 4.5 X 3mm straight baguette Diamonds, approx. 1.0ctw. Size 7 1/4. 4.7gtw.

700-1000

❖ 3067
Physicians 14K Yellow Gold Case. Fountain Pen, Pencil, Celsius Mercury Thermometer. Rod of Asclepius

5" overall with bail X 3/4" wide at handle X 3/8". Thermometer has green cabochon top, retractable lead pencil has red cabochon top, pen with gold nib has blue cabochon top. 40.3gtw.

800-1200

❖ 3068
14K White Gold Eternity Band with Diamonds

6mm wide. Features (38) round Diamonds, approx. 3.0ctw. Size 7. 7.0gtw.

1000-1500

3069
14K Yellow Gold Tapered Omega Necklace

18" long. Tapers 4 - 8.7mm. 30.2gtw.

600-700

3070
14K Yellow Gold Pendant Slide with African Star Ruby and Diamonds

Features (1) 16 X 12mm oval Star Ruby, 14cts and (11) round accent Diamonds, SI, .25ctw. 8.7gtw.

100-300

❖ 3071
18K Yellow Gold Art Deco Bracelet with Diamonds

14mm wide. 8" long maximum with adjustable length. Features chain fringe and (7) round Diamonds on runner end plus (12) round Diamonds on locking snap clasp with safety catch. Approx. .33ctw. 50.5gtw

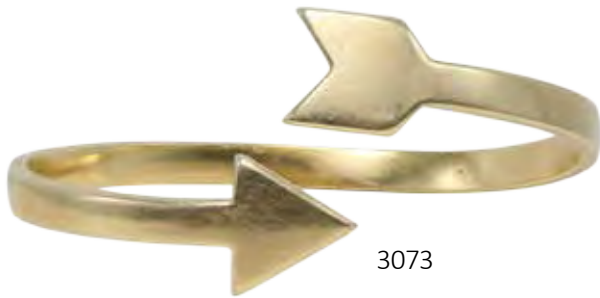
1200-1600

❖ 3072
18K Yellow Gold Ring with Sapphire and Diamond

Features (1) 6mm round Diamond, approx. .84ct and (1) 6.5mm round dark blue Sapphire. Size 6 3/4. 6.3gtw.

500-700

JEWELRY



3073

❖ 3073

Cartier 18K Yellow Gold Arrow Cuff Bangle Crossover Bracelet

Stamped Cartier and 18K. Approx. 5.2mm wide with 15mm wide arrow point and 12.8mm wide tail. 36.7gtw.

1000-3000

3074

14K Yellow Gold Tie Bar

1 3/4" long X 3/8" wide curb link design. 14.4gtw.

200-400



❖ 3075

18K Yellow Gold Figaro Necklace and Bracelets with Diamonds

7mm wide chains feature round Diamond accents in central 4-5 jump links of figaro design in each piece. Set: (56) Diamonds, approx. .56ctw. Set includes (1) 18KY Necklace with (20) Diamonds: 16 1/2" long with 14KY safety chain and damaged lobster clasp (1) 18KY Bracelet with (16) Diamonds: 7" long with 14KY pressure tongue clasp, safety chain and double safety catch, (1) Bracelet marked 22K tests 18K, with (20) Diamonds: 7 1/4" long with pressure tongue clasp and double safety catch. Set: 107.2gtw.

2500-3500



❖ 3076

**18K Yellow Gold Figaro
Necklace with 1852 United
States of America Twenty D.
Coin in Bezel Setting**

22" long X 7mm wide endless
chain with (1) 33.8mm I.D.
4-prong bezel setting holding (1)
1852 United States of America
Twenty D. Coin. 108.8gtw.

3000-4500



❖ 3077

**14K Yellow Gold Tennis
Bracelet with Diamonds.
2.75CTS**

7" long with safety catch. Features
(55) 2.5mm round brilliant cut
Diamonds, 2.75ctw, Clarity:
SI-2 Colour: I. 10.9gtw.

500-1000



❖ 3078

**14K Yellow Gold Ring with
Diamonds. 1.22CTS**

Features three round brilliant cut
channel set Diamonds: (1) 5.4 X
3.1mm, .55ct, Clarity: SI-2 Colour:
JK, (1) 4.5 X 2.85mm, .35ct,
Clarity: SI-2 Colour: JK and (1)
4.2 X 3.0mm, .32ct, Clarity: SI-2
Colour: K. Size 8 3/4. 10.3gtw.

1500-2500

JEWELRY



❖ 3079

Gent's Universal Geneve Compax 14K Yellow Gold Chronograph Wrist Watch

33.9mm diameter. Chronograph with additional complications features 3 subdials. Monogrammed "H.H." on deployment buckle. 68.6gtw.

1000-3000



❖ 3082

Agassiz 14K Rose Yellow Gold Chronograph. Pocket Watch Stop Watch

46.85mm. Open face. Serial #254748. Second and minute registers. Independent sweep second hand. 77.0gtw

800-1000



❖ 3080

Omega De Ville 18K Yellow Gold Quartz 1420 Wrist Watch with Date Register Window

32mm diameter round bezel. Metal dust cover. Brown genuine Crocodile band. 28.9gtw.

600-800



❖ 3081

Rolex Mickey Mouse Wrist Watch. 6694

34mm. Stainless Steel. 17 Jewel manual wind movement. Magnified date window. Leather band with Rolex clasp. Comes with box.

1200-1800



❖ 3083

14K Gold Keywind Fusee Pocket Watch. Turquoise Cabochons, Enamel, Rose and Green Gold Decor

45.5mm. Open face. Key present. Pierced cock. 50.9gtw without key.

600-800

3084

Gruen 14K Yellow Gold VeriThin Pocket Watch

46.3mm diameter round. Open face. Half hunters case. Monogrammed rear cover. Dust cover engraved with Nov. 2nd 1919. 17 Jewels. Serial #490808. 5 Positions Temperatures Adjusted. 56.9gtw.

300-500



❖ 3088

Bremont Chronometer Wrist Watch

43mm. Blue dial and leather band. Luminescent hands and hour markers. Sweep second hand. Day/Date windows. Skeleton back. Anti-shock 10ATM U2 14360. Comes with spare band of blue rubber type, case and booklet.

600-900

❖ 3085

Universal Geneve 14K Yellow Gold Wrist Watch

33.29mm. Second subdial. Black Croco leather band. 33.1gtw.

300-500

3086

Ulysse Nardin Gold Plated Wrist Watch

33.5mm. Blue dial with gold markers. Second subdial.

200-400

3087

Universal Geneve 18K

Yellow Gold Olden Shadow Automatic Ultra-Thin Wrist Watch. Tiger Eye. 25 Jewels 35.5 X 30.0mm oval. 2-66. 17R Genuine Lizard Band. 34.3gtw.

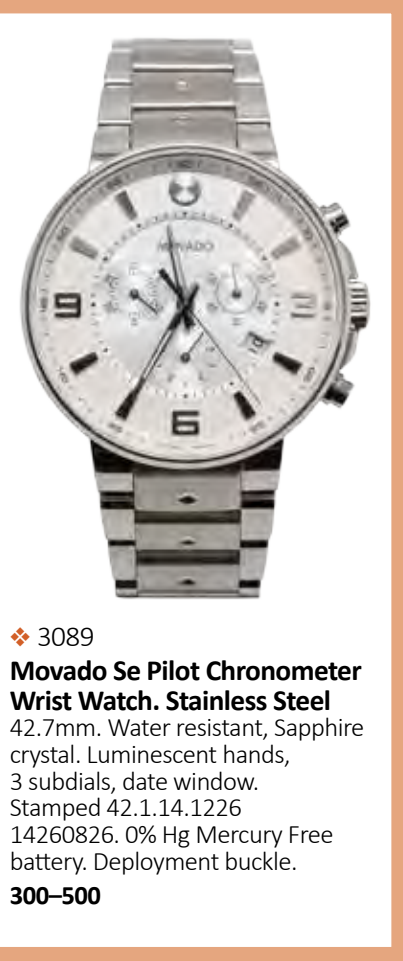
200-400

❖ 3089

Movado Se Pilot Chronometer Wrist Watch. Stainless Steel

42.7mm. Water resistant, Sapphire crystal. Luminescent hands, 3 subdials, date window. Stamped 42.1.14.1226 14260826. 0% Hg Mercury Free battery. Deployment buckle.

300-500



❖ 3090

Movado Wrist Watch. Stainless Steel

40mm. Water resistant, Sapphire crystal. Luminescent hands. Stamped 39.1.14.1213 13194199. 0% Hg Mercury Free battery. Deployment buckle.

200-400



❖ 3091

Movado Wrist Watch. Stainless Steel

40mm. Water resistant, Sapphire crystal. Date register at 6:00. Stamped 28 1 14 1121 11757508. Deployment buckle.

200-400



JEWELRY



❖ 3092

Rolex. Ladies Oyster Perpetual Datejust Chronometer Wrist Watch. Stainless Steel and 14K Yellow Gold

25.5mm diameter. Deployment buckle.

800–1200



3095

3094

Ladies Wittnauer 14K White Gold Wrist Watch with Diamonds

7 1/4" long. 36.3mm lug end to lug end. Watch and bracelet feature (26) round Diamonds, approx. .50ctw. 17 Jewels. Crown and safety chain show oxidation. There is some rust on the stem but winds smoothly. Currently runs intermittently. 15.1gtw without movement.

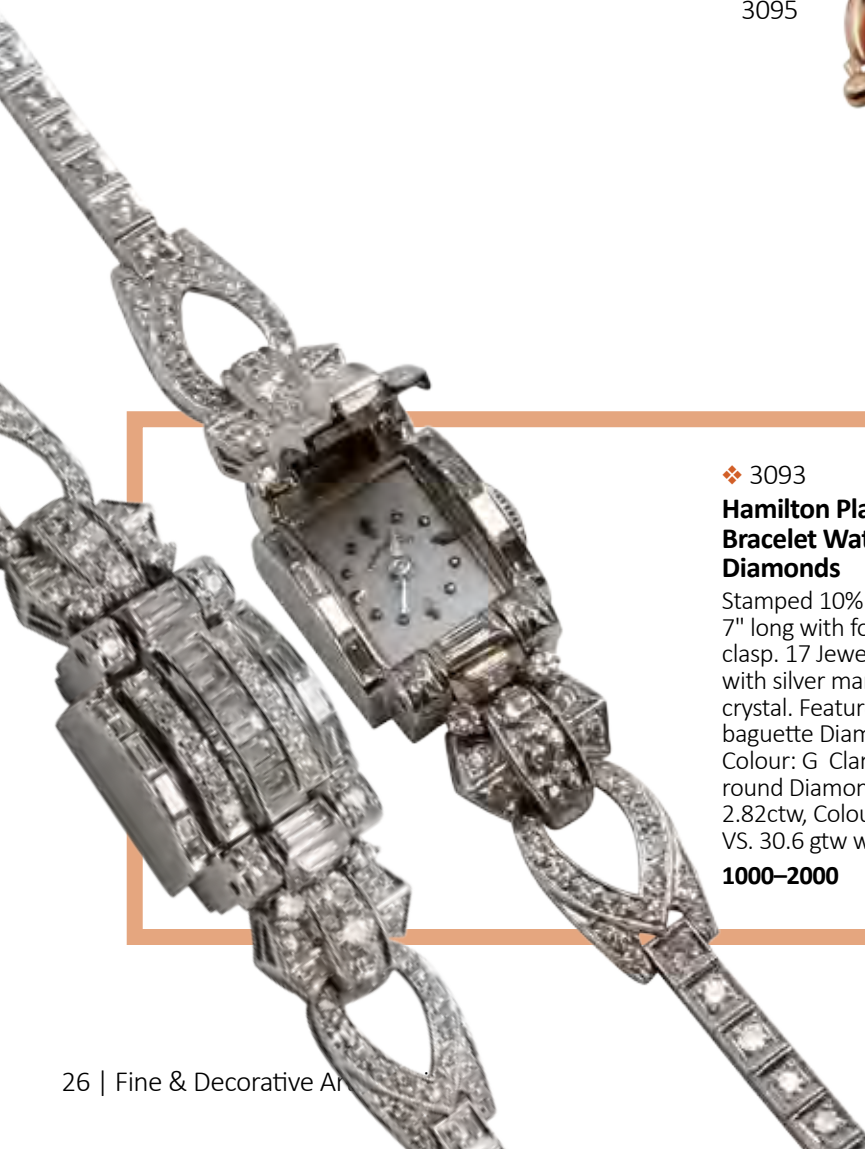
400–500

❖ 3095

Ladies Bulova 14K Rose Gold Art Deco Wrist Watch with Diamonds and Rubies

6 1/4" long. 42.5mm lug end to lug end. 17 Jewels, 5AB. Features (6) round Diamonds, approx. .24ctw, (4) round and (3) princess cut Rubies. One Diamond appears to need to be reset or replaced. 24.6gtw without the movement.

400–600



❖ 3093

Hamilton Platinum Ladies Bracelet Watch with Diamonds

Stamped 10% Irid. Platinum. 7" long with folder-over safety clasp. 17 Jewels. White dial with silver markers, missing crystal. Features (16) channel set baguette Diamonds, 0.80ctw, Colour: G Clarity: VS and (94) round Diamonds, approx. 2.82ctw, Colour: GH Clarity: VS. 30.6 gtw without movement.

1000–2000



❖ 3098
**Bell Sterling Silver
Squash Blossom Necklace
with Turquoise**
20 - 23". 53.5 X 46mm
centerpiece. 108.9gtw.
400-600

3096
**Ladies Kurz 18K Yellow
and White Gold Watch
with Diamonds**
17 Jewels Swiss 17mm
diameter round bezel. 6 1/2"
long. Features (4) 2.0mm
round Diamonds, approx.
.12ctw. 25.5gtw.
700-900



❖ 3099
**Tony Garcia Sterling Silver
Cuff Bracelet with Turquoise**
Signed, features (1) 38 X 27mm
free form Turquoise. 68.1gtw.
200-400



❖ 3097
**Silver Squash Blossom
Necklace with Turquoise**
27" long. Features (1) 84 X 85.4mm
centerpiece and (18) freeform
Turquoise cabochons. 235.3gtw.
800-1200

SILVER

❖ 3100

Tiffany and Company J.C. Moore Sterling Cream and Sugar -1853

Gothic M. 524, floral and "C" scroll decoration, figural finial on sugar bowl child with trumpet, bust of a woman on handle, C.1853 Stamped- English Sterling 925/1000, 550 Broadway NY address, Monogram "MAR". Same "Etruscan" pattern used with the Abraham Lincoln presentation ewer. 7.5"h and 9.5"h. 36.00 troy oz.

400-600



❖ 3101

Aesthetic Period Gorham Sterling Serving Spoons

Two serving spoons with morning glory handles, gold washed bowls, vine and floral piercing/etching, gold wash, 8.5"l, 5.46 troy oz.

200-300



❖ 3102

Georg Jensen Sterling Cream and Sugar

Lions head and paw feet, 3"h, 4"h, 10.02 troy oz.

200-400

❖ 3103

**Gorham Golden Medici
Sterling Flatware**

Service for 12, 12 teaspoons, 12 soup spoons, 12 dinner forks, 12 salad forks, 12 dinner knives, 12 butter knives, cold meat fork, tablespoon, pierced table spoon, gravy ladle, sugar spoon, 113.02 troy oz. (dinner knives factored at .5 oz, butter knives factored at .25 oz).

1500–2500



❖ 3104

Sterling Silver Service

5 piece set includes Teapot, Coffee Pot, Creamer, Sugar and Waste Bowl, 147.01 troy oz.

1000–2000



SILVER

❖ 3105

Joshua Johnson, Silver Tea Caddies

c.1800, King George III, 7.5"h. 15.85 troy oz.

400-600



❖ 3106

Art Nouveau Sterling Cigarette Case and Match Safe

Art Nouveau Sterling Cigarette case and match safe, winged nymph and figural nude decoration in relief. Cigarette case 3-1/2"h x 3-1/8"w x 1/4"d; Matchbox. 2-1/2"h x 1-3/4"w x 1/4"d

150-300



❖ 3107

Georgian Sterling and Gold Vermiel Dresser Set

Georgian Sterling and Gold Vermiel Dresser Set, monogram with crown motif, fitted leather case, set includes hand mirror, comb, two paddle brushes and two wafer brushes.

1000-2000

❖ 3108

Antique Russian Silver Torah Pointer

Hand decorated Russian silver torah pointer or Yad, with 4 Russian silver hallmarks. 10.25"l

200-300

❖ 3109

Antique Russian Silver Torah Pointer

Hand decorated Russian silver torah pointer or Yad. Unknown maker. 10.25"l

200-400

❖ 3110

Antique Russian Silver Torah Pointer

Hand decorated Russian silver torah pointer or Yad. Unknown maker, with chain. 15.25"l

200-400

❖ 3111

Antique Russian Silver Torah Pointer with Chain

Antique Russian Silver Torah pointer or Yad, unknown maker. 15.25"l

200-400



❖ 3112

Thomas Harper Georgian Silver Hot Water Urn

King George III, dated 1799 Hot Water Urn. 15"h x 11"w
Approx. 102 troy oz.

1000-1500



❖ 3113

Silver with Gold Vermeil Tea Service

12 teaspoons, sugar tongs, tea strainer, tea caddy spoon in original fitted, inlaid box, key. French hallmarks. 7.5"h x 11"w x 1.75"d

300-500

DECORATIVE



❖ 3114
Zuni Pot
White with brown and orange decoration, c 1930. 5"h x 4.5"w
200-400



❖ 3115
Native American Totem Pole Grouping
Hand carved and painted. 7"h, 8"h, 13"h
300-500



❖ 3116
Pre-Columbian Redware Pot
Double handle and decoration in relief. Provenance: Sotheby's.
4"h x 6.5"w
200-400

3117
Ashanti Gold Weights
Set of 5 bronze figural weights. 2"- 3"h
200-400



❖ 3118
Los Castillo Cocktail Shaker
Mexico, hand wrought, brass and silver cocktail shaker with incised figural decoration.
12"h x 5"round
300-500

3119

Los Castillo Malachite and Brass Frog Pitcher

Carved malachite frog applied to the spout, with inlaid malachite accents in the form of frogs in various positions. Marked "Los Castillo". 9.5"h x 7"w

200-400

3120

Los Castillo Turquoise and Lapis Vase

Mosaic design of turquoise and lapis depicting chieftain figures. Marked Los Castillo Taxco Mexico, 415 iechcanano. 11"h x 6"w

200-400

3121

Los Castillo Serving Pieces

Free form bowl with ball feet, silver with lapis trim. Complementing free form bowl, brass with lapis trim. Paired with serving spoons with lapis and dragon fly, lapis loose on one tray. Marked "Los Castillo". 18"h x 8"w, spoons 11.75'l

150-300

3122

Los Castillo Figural Serving Dishes

5 piece lot, copper, brass and silver bowls with bun feet. Including 4 pieces with fish form/decoration and 1 bird decoration. Marked Los Castillo. 7"-14"

150-300

3123

Chalkware

Pair of reindeer figures. One has repair. 10.5"h x 8.25"w x 3"d

200-400



❖ 3124

Occupational Sign

Double-sided sign by G.Kruger, boot and shoe maker. 22"h x 16"w

200-400



❖ 3125

Egyptian Funerary Mask

Gifted to Henry Heymann from Cy Twombly, 1957. 9.5"h x 7"w x 3.5"d

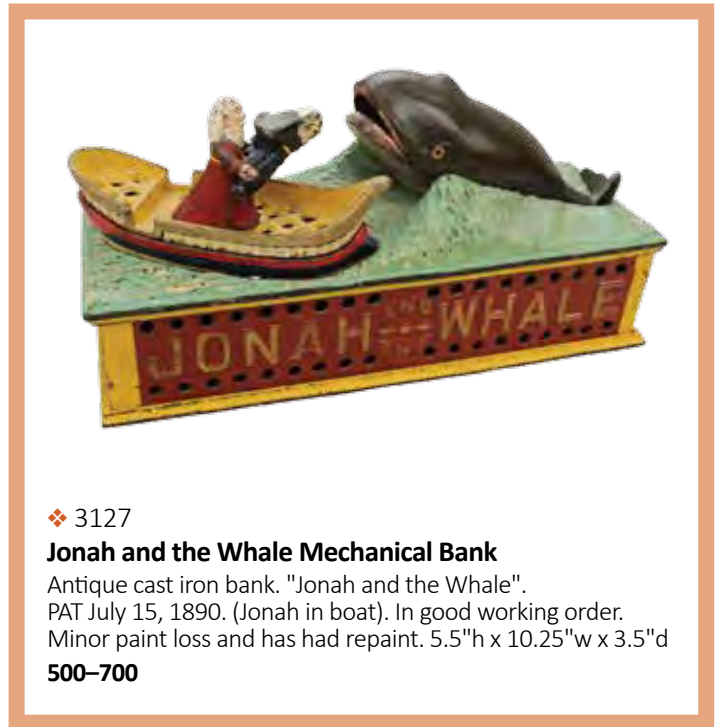
200-400

3126

Applique Quilted Wall Hanging

Green brown and orange, framed under glass. 34"h x 34"w

200-400



❖ 3127

Jonah and the Whale Mechanical Bank

Antique cast iron bank. "Jonah and the Whale". PAT July 15, 1890. (Jonah in boat). In good working order. Minor paint loss and has had repaint. 5.5"h x 10.25"w x 3.5"d

500-700

DECORATIVE



❖ 3128

Eagle and Eaglets Mechanical Bank

Antique cast iron bank. "Eagle and Eaglets". PAT Jan 23, 1883. Paint is worn near coin slot. In good working order. 6"h x 8"w x 3.5"d

300–500



❖ 3129

Pair of Fine Chinese Porcelain Hand Painted Vases

Matching pair, fine porcelain with exquisite enameled horse and landscape decoration, blue border on base rim and around flared rim. Signed on base. One vase has restoration to rim. 11"h x 6.5"w

1000–1500

3130

Chinese Carved Walnut

Hediao Faces. 1.5"h x 1"w

100–200

3131

Fine Miniature Satsuma Vase

Baluster form decorated with five panels of genre' decoration, signed. 5"h x 2.25"w

200–400

3132

Fine Miniature Satsuma Vase

Decorated with two panels with genre' decoration on a gilt background. 4.75"h x 2.75"w

200–400

3133

Fine Miniature Satsuma Vase

Footed vase with panoramic genre' decoration. Impressed signature on foot. 5"h x 3.75"w

200–400

3134

Fine Miniature Satsuma Vase

Baluster vase, genre' decoration. Signed. 4.75"h x 2.25"w

200–400

3135

Imperial Blue Satsuma Miniature Jar

Imperial blue with gilt decorations, two decorated panels with figures and birds. 3.5"h x 2.5"w

200–400

❖ 3136

Fine Miniature Satsuma Grouping

3 fine quality miniature Satsuma vases. All signed. Tallest 4"h

300–500

❖ 3137

Fine Miniature Satsuma Grouping

Fine quality miniature Satsuma vase with elephant handles and covered bowl which also has a decorated interior.

Both signed. 2.25"h x 2"w, 3.5"h x 2.5"w

200–400

❖ 3138

Fine Miniature Satsuma Grouping

2 fine quality miniature Satsuma bowls. Both signed, 4.75" and 5" diameters.

300–500

3136
3137
3138



❖ 3139
Chinese Russet Jade Duck Carving
Finely carved russet jade duck carving. 3.25"h x 5.5"w x 2.75"d
300-500



❖ 3140
Chinese Jade Carvings
Finely carved jade birds on fitted wooden stands, carnelian and mottled white and green jade. 4"h x 5"w
300-500

DECORATIVE



❖ 3141

Japanese Cloisonne Enamel Bud Vase

Mirror black ground with gulls flying over ocean. 7.5"h x 5"w

300–500



❖ 3143

Fine Chinese Famille Rose Vase

Early porcelain vase with finely decorated panels depicting a warrior man fighting and woman dancing. Base has a celadon colored border with a woven pattern. The body is decorated with chrysanthemum and other flora. 4 character mark. 12.75"h x 6.5"w

1000–1500



❖ 3142

Early Chinese Famille Rose Vases

Matching pair of fine Chinese famille rose vases on apple green background. 10"h x 4.75"w

1000–1500

3144

Fine Satsuma Vase

Imperial blue ground with genre' decorated panels, polychrome enamel decoration with gilt accents, signed, 6.5"h x 3.25"w

200-400

3145

Pair of Chinese Hand Painted Jars

Black ground with genre' decoration, signed. 9.75"h x 7"w

200-400



❖ 3146

Japanese Cloisonne Vase

Dragon motif on black ground, signed. 7.5"h x 3"round

200-300



❖ 3147

Ming Chinese Bronze Dragon Censor

Dragon with hinged head with open mouth. 3.5"h x 2.25"w

300-500



❖ 3148

Ming Chinese Bronze Foo Dog Censor

Complemented by a carved wooden base, 3.5"h x 3.5"w

200-400

3149

Japanese Silver Bud Vase

Etched floral design with gold inlaid butterfly. Signed. Small depression. 6"h x 2.75"w

200-400

3150

Chinese Jade Fishing Weight

Russett jade colors. 1"h x 3"w

100-200

DECORATIVE



❖ 3151

Chinese Export Porcelain Tea Pot and Sweet Meat Container

"Mystery" Tea Pot and sweet meat container in the form of fruit, 5"h x 6.75"w and 2"x 3.5"

200-400

3153

Samson Porcelain Bowl

19th century. French Porcelain bowl in the style of Chinese Armorial Export, floral and armorial decoration, 5.5"h x 11.5" diameter

150-300

3154

Samson Porcelain Grouping

19th century. French porcelain lidded ginger jar 10"h x 5"w, small lidded vase 7"h x 2.75"w, reticulated footed dish 9", decorated with armorial crests and floral motif.

200-400

3155

Samson Porcelain Grouping

19th century. French porcelain with floral decoration. Lot includes brush pots, vases and perfume. 3.5" - 7"h

200-400



❖ 3152

26 pc. Samson Armorial Tea Service

French 19th century, porcelain in the style of Chinese Export. Includes hand painted decoration central medallion of horse and lion supporting a familial shield with crown floral border trimmed in gold. Includes 10.5" tea pot, 7" creamer with lid, 6.5" lidded sugar bowl, (10) 9.5" dinner plates, 6 cups and saucers, complementing 9.5" bowl with variation to decoration, central medallion lion and unicorn supporting familial crest. (restoration to handle on tea cup and two saucers)

1000-2000

3156

Samson Armorial Covered Dish and Underplate

19th century. French porcelain covered dish and under plate with armorial decoration. 10.5"h x 5"w x 10"d

200–300

3157

Samson Porcelain and Enamel Plates

Includes (6) 19th century French porcelain enamel and gilt decorated plates. Central design with village scene and borders decorated in vibrant primary colors and miniature paintings. Signed with Samson faux Chinese mark. 6.75"round

200–300

❖ 3158

Japanese Meiji Cloisonne Plates

Complementing pair, both with floral and butterfly motif. Pair also has fish scale patterns on verso. 12" round

400–600

❖ 3159

Antique Chinese Bronze Gu Vase

Unsigned. 9"h x 4.75"w

400–600

❖ 3160

Antique Chinese Bronze Vase

Hammered design and elephant handles, unsigned. 9.25"h x 7.5"w

400–600

❖ 3161

Antique Chinese Bronze Vase

Curved handles, unsigned. 11.75"h x 9"w

400–600

❖ 3162

Japanese Bronze Meiji Dragon Censer

Adorned with applied winged dragons and finely detailed body with dragons, scholar and geometric design. 14"h x 11"w

400–600



3158



3159



3160



3161



3162

DECORATIVE



❖ 3163

19th C. French Malachite and Ormolu Jewelry Casket

Exquisitely decorated jewelry casket with figural mounts of gilt dore and malachite. 8"h x 8.5"w x 6"d

1500–2500



❖ 3164

Russian Empire Malachite and Ormolu Jewelry Casket

Finely decorated 19th century malachite jewelry casket in rectangular form with hinged lid, supported on four paw feet decorated with scrolling acanthus leaves. A unique feature is an embroidered plaque of a hunting scene applied to the lid. Burled mahogany veneer interior. 9.5"h x 3.75"w x 7.5"d

2000–3000



❖ 3166

Victorian Ormolu Jewelry Casket

Finely decorated with gilt decoration on silvered metal with floral accents, on raised gilt decorated feet. 4"h x 7"w x 7"d

600–900



❖ 3165

French Palais Royal Blue Opaline Scent Caddy

19th century, finely detailed ormolu frame on raised claw feet. 5.5"h x 5.25"w x 4.25"d

1500–2000



❖ 3167

Leopold Oudry Jewelry Casket

Silvered and gilt dore construction. Finely detailed with avian motif which includes birds of paradise, swans, ducks and other game birds. Retains original tufted lining. Signed "L. Oudry, Editeur". 6"h x 3.5"w x 3.75"d

600–800



❖ 3168

Victorian Ormolu Jewelry Casket

Beautifully decorated with unlined interior separated into two equal sections. 2" h x 4" w x 3" d

500-700



❖ 3169

Gilt Dore Jewelry Casket

Finely decorated on every panel with landscapes, animals and flowers. Makers mark is GGB with an owl. 7.25" h x 4.5" w x 4.5" d

800-1200



3172

3171

3170

3173

❖ 3170

Neoclassical Moire Ormolu Frame

Figural ormolu decoration on a green background. 14" h x 11" w

800-1200

❖ 3172

French Empire Neoclassical Ormolu Frame

Figural ormolu decoration on a green background. 8.5" h x 6.75" w

500-700

❖ 3171

French Ormolu Moire Neoclassical Frame

Greek sphinx and other female motifs. 9.75" h x 6.75" w

500-700

❖ 3173

French Empire Neoclassical Moire Ormolu Frame

Large central putti decoration and finely detailed borders with solid mahogany insert. 10" h x 9" w

500-700

DECORATIVE



❖ 3174

Pair of French Gilt Bronze Mounted Serpentine Marble Vases

Louis XVI, each with gilt metal artichoke finial; the body of baluster form with a tapering neck; gilt metal laurel leaf upper border; and scrolling double handles in the form of entwined serpents. Have been converted to lamps. 33.5"h x 5.75"w x 4"d

2000–3000



❖ 3175

French White Opaline Ormolu Perfume Casket

Hand decorated with ormolu fittings. Includes 2 crystal perfume bottles with ormolu accents and holders.

6"h x 4.5"w, bottles 3.25"h

800–1200



❖ 3176

French White Opaline Ormolu Perfume Casket

Hand decorated with ormolu fittings. Includes 2 crystal perfume bottles with ormolu accents and holders. Includes original key, and functional locking mechanism.

6.5"h x 5.25"w x 4.4"d, scent bottles 3.5"h

800–1200



❖ 3177

French Napoleon III Palais Royal Mechanical Scent Caddy

Ormolu decorated construction with medallions featuring painted scenes of Paris. Does not include interior bottles.

7"h x 3.5"round

1000–1500



❖ 3178

Murano Glass Dresser Box

Hand decorated in 24 carat gold and painted accents, with floral decoration, signed "Murano". 6"h x 12"w x 17.25"d
1000-1500



❖ 3179

Giancarlo Begotti Murano Penwork Dresser Set

Complementing Murano glass dresser set with Victorian style penwork and ormolu fittings. Signed "Giancarlo Begotti Murano". 3.25"h x 9"w x 5.5"d. 2 pcs 4"h x 2"w x 2"d
1200-1500



❖ 3180

Palais Royal Blue Opaline Scent Bottle, Napoleon III

Floral dore bronze accents and mounts. Alabaster plinth. 8.75"h x 5"w x 3.5"d
400-600



3181

Virginie Hue Brevet (1800-1830) Miniature Portrait

French ormolu frame. Signed "Brevet". 6"h x 4.75"w
400-600

❖ 3182

Dutch 14K Gold and Crystal Perfume Bottle

Crystal vessel with gold mounts, Dove Finial, "oak leaf" hallmark, in fitted leather case. 4.5"h x 1.75"w
300-500



❖ 3183

Daum Nancy Cameo Glass Vase

Baluster form with furled rim. Signed in cameo "Daum Nancy with Cross of Lorraine". 19.5"h x 7"w
1200-1800

DECORATIVE



3184



3186



3188

❖ 3184

Durand Art Glass Vase

Hearts and Vines on iridescent gold ground. 12"h x 5"w

600–900

3185

Tiffany Favrille Wine Glasses

Complementing pair of Tiffany Favrille wine glasses.

Signed "LCT". 8.25"h x 4"round

400–600

❖ 3186

Orient and Flume Art Glass Vase

Orient and flume floral art glass vase. Signed Alexander/Smallhouse. 12.25"h x 4.5"w

200–400

3187

Orient & Flume Art Glass Vase

floral art glass vase. Signed "Orient and Flume" and dated May 19, 1982. 10.25"h x 5.5"w

200–400

❖ 3188

Tiffany Favrille and Enameled Gilt Dore Bronze Basket

Rare Louis Comfort Tiffany Favrille glass basket with gilt dore enameled handle. Basket is signed "L.C. Tiffany Inc. Favrille, 3633 N". Handle is enameled and marked Louis C. Tiffany Furnaces Inc. "507". 9.5"h x 7.5"w

1000–2000



3189



3190



3191



3192

❖ 3189

Tiffany Favrilie Glass and Bronze Vase

Signed "L.C.T", base marked Tiffany Studios 715. Small flea bite on rim. 25.5"h x 7.5"w height includes base.

800-1200

❖ 3190

Loetz Art Glass Vase

Blue/green vase with golden iridescence, vertical ridged design, flared rim. 11"h x 5.25"w

300-500

❖ 3191

Galle Cameo Glass Vase

Green floral and vine decoration over a peach and white satin ground, signed. 5.5"h x 2.5"w

200-400

❖ 3192

Daum Nancy Cameo Glass Vase

Bulbous, 5 color vase with floral decoration, peach, raspberry, pink, orange, grey. Signed "Daum Nancy, France". 6.75"h x 5"w

500-1000

DECORATIVE



❖ 3193

Loetz Titania Silver Overlay Art Glass Vase

Mottled green shading to blue background. Vase has pinched shoulders and ruffled lip and has a silver overlay collar in the form of four petaled flowers with draped design dropping below the floral band. The interior of the vase is finished in bright blue with a silver overlay lip. 4.5"h x 3.75"w

2000–3000



❖ 3194

Daum Nancy Cameo Glass Vase

French, cameo glass vase, red, green and blue berry and vine decoration on satin background. 15.25"h

3000–5000



❖ 3195

Tiffany Favrilite Art Glass Trumpet Vase

Gold iridescent on raised ribbed base, fluted rim, signed LCT Favrilite, 2201-c. 14"h x 5.25"round

500–1000

3196

Val St. Lambert Art Glass Vase

Art deco design with molded feather design, smoky overlay and applied silver ring. Signed "VsL on underside. 10"h x 7"w

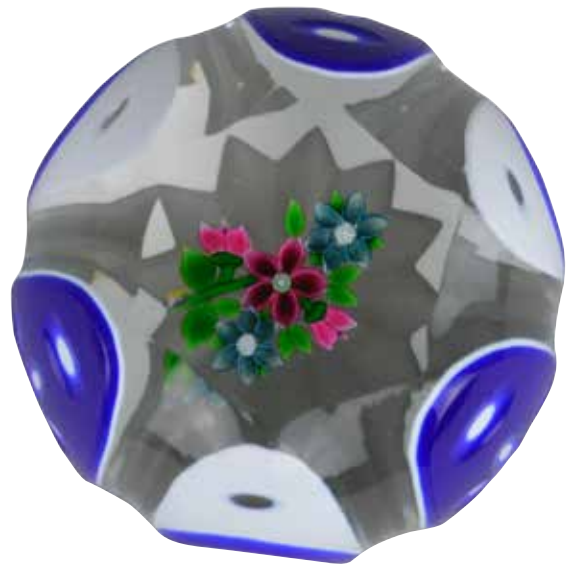
200–300

3197

Orient and Flume Dogwood Cased Glass Vase

Cane signed "OF 83". Signature on base "CP1983 O49". 9"h x 7"w

200–400



❖ 3198

Pershire Art Glass Paperweight

Cobalt cased cut to clear with floral decoration, signed in cane. 2"h x 2.75"round

200–400



❖ 3199

Baccarat Paperweight

Floral canes and latticing swirl, dated 1967 in cane, signed.
2" h x 3" round

200-400

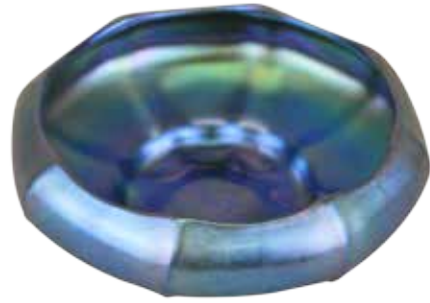


❖ 3200

**Art Glass Bronze Mounted
Table Lamp**

Gold with blue swirl decoration,
drilled. Unsigned. 21" h x 6" w

200-400



❖ 3201

Steuben Aurene Art Glass Bowl

Signed "Aurene" around plinth. 2" h x 5.75" round

200-400



❖ 3202

Tiffany Studios Venetian Desk Set

8 pieces, including letter holder, calendar frame, stamp box, ink well, ink blotter and blotter ends, and complementing letter opener. Stains, wear. Marked "Tiffany Studios NY".

1000-1500



❖ 3203

Tiffany Studios Bronze Ink Well

Pine Needle Pattern, Tiffany Studios New York #847.
3.75" h x 6.5" round

200-400

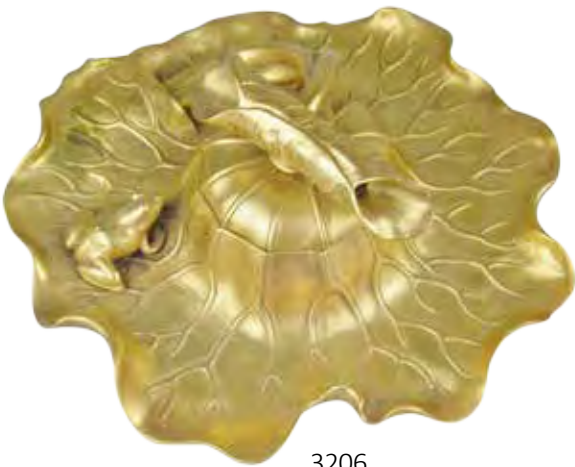
DECORATIVE



3205



3207



3206



3210



3208



3211

3204

Heintz Art Metal Shop Bud Vase

Sterling on bronze. Heintz art metal incised mark #3683 PAT.AUG.12. AMS 12"h x 4"round base

100–200

❖ 3205

Heintz Art Metal Inkwell

Bronze with sterling pinecone overlay design. Heintz art metal incised mark #1182. 2.25"h x 4.25"w

200–300

❖ 3206

Gilt Bronze Ink Well, Frog on Lily Pad

Sliding lid. 3.5"h x 8"round

300–500

❖ 3207

Napoleon III Gilt Dore Cut Crystal Inkwell

Beautifully decorated French cut crystal and gilt dore double inkwell and pen rest. Supported on large figural cherub rests, with laurel and cherub motif throughout. 10"h x 8.5"w x 5.25"d

800–1200

❖ 3208

Regency Ormolu and Marble Candlesticks

Ormolu decoration and dark green marble construction. 7"h x 3.25"w x 3.25"d

200–400

3209

Victorian Velvet Lined Vanity Box

Burl wood construction with armorial inlay. Includes various lidded jars and compartments. 12"h x 9"w x 7.5"d

400–600

❖ 3210

Art Deco Figural Candelabra and Dinner Bell

Chrome and Bakelite candelabra and dinner bell, nude female silhouette supporting candle sockets 9"h x 8"w, nude female form supporting a gong and mallet 8"h x 8"w

300-500

❖ 3211

Kataro Shirayamadani Vellum Rookwood Vase

Decorated with palm trees and birds in flight. Circa 1910, #1652D. Signed "Kataro Shirayamadani" in Japanese. 9.25"h x 5"w

1000–1500

❖ 3212

Kate Van Horne, Rookwood Pottery Vase

Blue to pink ground with pink and white flowers, signed, "K.V.H", Kate Van Horne. 8"h x 3.5"w

200–400



3212

DECORATIVE



❖ 3213
**Frederick Rothenbusch
Rookwood Pottery Vase**
Floral decoration. 6" h x 5" w
300-500



❖ 3216
Weller Louwelsa Pottery Vase
Weller Louwelsa vase decorated
with chrysanthemums, signed "A.
Haubrich". 7.5" h x 5.5" w
300-500



❖ 3217
**Frederick
Rothenbusch
Rookwood
Pottery Inkwell**
Rockwood Japanese
Influence Inkwell
dated 1901. Artist
signed Fredrick
Daniel Henry Rothenbusch. 2" h x 8.25" w
300-500



❖ 3214
Newcomb College Vase
Squat bulbous vase, satin glaze with banded decoration
of morning glory, signed. 3" h x 5.5" w
500-1000



❖ 3218
Pair of Tile Plaques
Hunter perched on mountainside over looking a river,
fisherman by the stream. One with drilled hole, one with hole
filled. 12" h x 6" w framed
200-400



❖ 3215
Weller Hudson Iris Pottery Vase
Iris decoration. 9.5" h x 4" w
200-400

3219

Rookwood Art Pottery

Circa 1894, with floral decoration and orange glazed rim and handle. 8"h x 5.75"w

200-300

3220

Roseville Futura Grouping

Shooting star vase and blue sunray pillow vase. 10"h x 5"w

100-200



❖ 3221

Jugendstil Perex Art Pottery Amphora-Style Vase

Decorated with gilt webbing and glazed stones with a horizontal band decorated with holly. Incised "Perex Austria and Holly" marks. 6.25"h x 6.25"w

500-800

3222

Weller Art Pottery Hunter Vase

Low vase, signed "Hunter". 2.25"w x 7"round

200-300

❖ 3223

Bradley & Hubbard / Weller Pottery Aurelian Pattern Table Lamp

Paint decorated globe, base marked Weller Aurelian. Also includes Bradley and Hubbard kerosene lamp. Has not been electrified. 14.5"h x 14"w

200-400



3224

Rookwood Art Pottery Grouping

Floral rectangular shaped center bowl 9"h x 6"w x 2.5"d, and a squat dark brown glazed vase. 3.5"h x 4.5"w

200-300

❖ 3225

Weller Pottery Vase by Hester Pillsbury

Thistle floral decorated vase, crazing, signed "H. Pillsbury", 12"h x 7"w

150-250



3226

Rookwood Tea Cups and Saucers

Early marks with no flame and 3 flames left handled 2.75"h x 4.75"w. Other 2.25"h x 4.25"w

200-400

3227

Rookwood Horse Head Bookends – William McDonald

Rookwood horse head bookends designed by William P. McDonald. 6.25"h x 6"w

200-400

3228

Rookwood Pottery Grouping

Standard glaze, 2 vases - one by Edith Noonan 1904. 5"h x 3.5"w, other 6"h x 2.5"w, and creamer 2"h x 3"w x 4.5"d

200-300

3229

Rookwood Art Pottery Ewer Grouping

Slender form is signed L.V.B, and the other is Frederick Rothenbusch. Tallest measures 7"h

200-300

DECORATIVE

3237



3230

Weller Bud Vase

Metallic multi-tone scenic decorated vase, unsigned. 7.5"h x 2.5"w
200-400

3231

Free Form Art Pottery Vase

Metallic glaze with purple with green and brown design.
5"h x 2.5"w

200-400

3232

Owens Utopian Art Pottery

Both signed. 12"h x 4.75"w and 10.75"h x 6"w

200-400

3233

Owens Utopian Art Pottery

Both signed. 9"h x 5.5"w and 6.5"h x 6"w

200-400

3234

Owens Utopian Art Pottery

Both signed, Corn jug #1266. 7.5"h x 5"w and #790. 6.5"h x 4.75"w

200-400

3235

Owens Utopian Art Pottery

2 bud vases, all signed, 5"h x 3.75"w and 3.75"h x 3.75"w, double handled vase 6"h x 3.75"w and wide vase 4.25"h x 5"w

200-400

3236

Utopian Art Pottery

Utopian style small pitcher, marked. All unsigned. 6.75"h x 6"w.

Vases 12" and 6" h x 5.75"w

200-400

❖ 3237

German Porcelain Hawk with Rabbit

Finely decorated German porcelain figure of a hawk over a rabbit.
Mark illegible, with incised fox. 10.5"h x 14"w x 7"d

300-500

❖ 3238

Lomonosov Porcelain English Bulldog

Soft porcelain English bulldog figurine. Handpainted from the Imperial factory in St. Petersburg. 6"h x 4.5"w x 11"l

200-400

❖ 3239

Fritz Diller Rosenthal Porcelain Bulldog

Signed "F. Diller", circa 1920's. 8.75"h x 6"w x 12"l

1000-2000



3238

3239





❖ 3240

Nymphenburg Porcelain English Bull Dog

Designed by Konrad Schmid, 1929. Signed with incised "KS. #676".
6.75"h x 5.25"w x 11"l

300-500



❖ 3243

Faience 8 Day Clock

In the form of a miniature tall case clock, blue and white decoration, ships, genre', flowers. French 8 day brass movement, porcelain dial, key and pendulum intact.

18"h x 5.75"w

400-600



❖ 3241

Lladro "The Hunt"

Sculptor Salvador Furio, "The Hunt (L.E.) (B)", Limited Edition, base included, signed. Loss to reigns, missing crop. 20"h x 21"w x 14"d

500-700



❖ 3244

14 French Hand Painted Game Plates

Signed Vivien, hand painted decoration of large and small game including, quail, shore birds, sparrows, pheasants, ducks, rabbits, boar, elk, fox. Signed "Paris" in gold. 9" diameter

400-600

❖ 3242

11 Chelsea Hand Painted Plates

18 Century, gold anchor mark, hand painted polychrome decoration of variations of birds and flowers, floral border, gold band. 9.5" diameter

800-1200



DECORATIVE



❖ 3245

Miessen Figural Candelabra

Pair of 3 lite candelabra with applied floral decoration, bases decorated figural groups, young lady with goat and flowers being serenaded by a young man, blue crosses swords mark. Loss to hatchet, flowers. 13.5"h x 10"w

200-400

3246

C. Durand Portrait Plate

Framed and signed "C. Durand" portrait plate of a gypsy woman. 20"h x 20"w

200-400



❖ 3247

Collection of Canary Yellow Creil Plates

A collection of Creil, and other manufacturers, creamware plates in canary yellow, 8" round. Includes 7 plates with central designs depicting Greeks and Turks. 8.5" round; octagonal plate 9" square

800-1200

3248

Royal Worcester Demitasse Set

Includes original Mortimer Ricks fitted case, 6 Demitasse cups and saucers; 6 guilloche enameled spoons. 3"h x 13.75"w x 10.25"d

200-400



❖ 3249

Enameled Soft Paste Tea Service

Beautiful signed enamel decoration of flowers and butterflies, sugar, creamer, 11" plate and teapot 4.25"h x 5.5"w

300-500

3250

Theodore Haviland Cobalt Blue French Limoges

Serving dish and plates with various species of birds. All signed "J. Martin". 18.5"h x 12.5"w and (12) 9"d

400-600



❖ 3251

French Limoges Charger Grouping

Single hunting dog is B & H limoges France, 12.5" diameter. Charger with the pair of hunting dogs is L.S. & S. Austria, 13" diameter

300-500



3256

Austrian Charger Grouping

The charger with the kiwi is signed, L. S. & S. Carlsbad Austria, 13" diameter. Partridge is L. S. & S. Austria, 13" diameter

300-500

3257

French Limoges Charger

French limoges charger with partridge design, signed, R H or R R limoges France. 13.5" diameter

200-400

3258

French Limoges Charger Grouping

Charger with courting Victorian couple is imperial limoges France, 13" diameter. Charger with the minstrel is coronet limoges France, signed "Armanto", 13" diameter

300-500

❖ 3252

French Limoges Charger by Dubois

L. S. & S. Genré decorated, 15.5" diameter

200-400



❖ 3259

Wagner, Portrait Plaque

Framed porcelain tile. Portrait of a woman with sheaf of wheat. Signed "Wagner", 6" h x 4" w

200-400



❖ 3253

French Limoges Charger Grouping

Victorian scene of a lady with cat in the windowsill is L. S. & S. Limoges France, 13" diameter. Victorian couple charger is L. R. L. Porcelain Limoges France, 13" diameter

300-500

3254

French Limoges Charger Grouping

Charger with fish on the beach is L.R.L. French limoges signed "De Nerval", 15.5" diameter. Swimming fish L.R.L. limoges France, signed "Bitet", 15.75" diameter

300-500

3255

French Limoges Charger Grouping

Charger with the pair of birds of paradise is signed, France limoges, 13" diameter. Bird of paradise in the forefront is L.S & S Carlsbad Austria, 13" diameter

300-500



❖ 3260

Royal Crown Derby Vase

JE Caldwell, Hand Painted floral vase with canary yellow banding and gilt trim. 11.5" h x 7" w

200-400

DECORATIVE

3265



3269

3271



3261

KPM Porcelain Covered Toureen

Double handle lidded tureen with floral decoration, flowers in relief, figural knob with child picking flowers. 10"h x 11"w

200-400

3262

Nippon Tea Service

15 pc. service for six includes teapot, sugar, creamer and cups and saucers decorated with swans and foliage on yellow ground, gilt accents and enameled jewels around rim.

100-200

3263

Cranberry Cut to Clear Decanters

Complementing Pair, 14.75"h x 4.75"w and 14.25"h x 4.25"w

100-200

3264

Monumental Brilliant Cut Glass Vase

19.5"h x 8"round

200-300

❖ 3265

Moser 6/l Liquor Set in Presentation Case

Includes 12 mouth-blown and cut, engraved or gilded in 24 carat gold by hand miniature liquor glasses. Includes original velvet-lined presentation case. The 12 styles included are: Maharani, Pope, Splendid, Diplomat, Adele Melikoff, Mozart, Cromwell, Napoleon, Copenhagen, Royal, Argentina, and Lady Hamilton. Glasses range in size from 3" to 5"

500-800

3266

Moser 6/l Liquor Set in Presentation Case

Includes 12 mouth-blown and cut, engraved or gilded in 24 carat gold by hand miniature liquor glasses. Includes original velvet lined presentation case. The 12 styles included are: Maharani, Pope, Splendid, Diplomat, Adele Melikoff, Mozart, Cromwell, Napoleon, Copenhagen, Royal, Argentina, and Lady Hamilton. Glasses range in size from 3" to 5"

500-800

3267

Richard Satava Art Glass Vase

Purple 3-D floral decoration. 9"h x 7"w

200-400

3268

Cold Painted Bronze Bird and Flowers with Slag Glass Bowl

Cold patinated bronze nest with bird, with red slag glass insert. Measures 8"h x 6.5"w

200-400

❖ 3269

French Carved Walnut and Beveled Glass Tantalus

4 hand decorated decanters and 16 cordials housed in carved walnut case with a 5 beveled glass windows. Includes key. 11.5"h x 15"w x 11.75"d

200-400

3270

French Enamel on Copper Framed Plaque

Victorian Woman in Garden, convex copper plaque with foiling technique. Plaque 4.75"h x 4"w and 16"h x 15.5"w framed.

300-500

❖ 3271

1898 University of Pennsylvania Presentation Cane

Silver overlay on mother of pearl presentation cane. Inscribed 1898, University of Pennsylvania "Cane Man" Cane Award. 36"l

200-400

3272

Carved Handle on Bamboo and Gambler's Canes

Carved handle on bamboo cane 35"l. Gambler's cane with dice 35.5"l

300-500

3273

14K Gold Capped Cane

14K gold (tested) capped cane. 36"l

200-400

3274

Hand Painted Parlor Lamp

Success kerosene lamp with brass font, electrified. Mosaic painted lamp, decorated with panels of Diana the Huntress and her dog and Elk, conforming shade. 30"h x 17"w

200-400

3275

10 pc. Boehm Porcelain Nativity

Mary, Joseph, Baby Jesus, three wise men, sheperd, lamb, and two angels. Mary, Joseph and Jesus are signed " Best Wishes the Boehm Studios, George Boehm." Loss to fingers on sheperd and angel. Includes original packaging for Mary, Joseph and Jesus and the three Kings. 8"-12"

400-600

3276

Boehm Porcelain Ruffed Grouse Grouping

Includes (3) Boehm porcelain figures, including Limited Edition Boehm Ruffed Male Grouse porcelain figure, #50. c. 1977, 11"h x 10"w. Limited Edition Boehm Ruffed Grouse chicks, #50. c. 1977, 4.75"h x 3.75"w. Limited Edition Boehm Ruffed Female Grouse with chicks, #50. c. 1977. 15"h x 7.5"w

400-600

DECORATIVE

❖ 3277

Boehm Porcelain Treasures of Tutankhamun "The Mask"

Numbered Limited Edition Boehm Obelisks. Courtesy of The Egyptian Museum, Cairo for the United States Bicentennial with the Exhibition of the Treasures of Tutankhamun 1976 to the Spring 1979, #458. Repair to ear. 12.5"h x 9"w

500-700

❖ 3278

Boehm Porcelain Treasures of Tutankhamun "Sacred Cowhead"

Numbered Limited Edition Boehm Sacred Cowhead. Courtesy of The Egyptian Museum, Cairo for the United States Bicentennial with the Exhibition of the Treasures of Tutankhamun 1976 to the Spring 1979, #542. 12"h x 9"w

200-400

❖ 3279

Boehm Porcelain Treasures of Tutankhamun "Obelisks"

Numbered Limited Edition Boehm Obelisks. Courtesy of The Egyptian Museum, Cairo for the United States Bicentennial with the Exhibition of the Treasures of Tutankhamun 1976 to the Spring 1979, #72. 18"h x 3"w x 3"d

200-400

❖ 3280

Boehm Porcelain Treasures of Tutankhamun "Guardian Figures"

Numbered Limited Edition Boehm Guardian Figures. Courtesy of The Egyptian Museum, Cairo for the United States Bicentennial with the Exhibition of the Treasures of Tutankhamun 1976 to the Spring 1979, #36B. 8"h x 15.5"w

200-400

❖ 3281

Boehm Porcelain Treasures of Tutankhamun "Falcon Emblems"

Numbered Limited Edition Boehm Falcon Emblems. Courtesy of The Egyptian Museum, Cairo for the United States Bicentennial with the Exhibition of the Treasures of Tutankhamun 1976 to the Spring 1979, #210A. Separated from base but not broken. 10"h x 9"w

200-400

3282

Boehm Porcelain Treasures of Tutankhamun "Sacred Ibis"

Numbered Limited Edition Boehm Sacred Ibis. Courtesy of The Egyptian Museum, Cairo for the United States Bicentennial with the Exhibition of the Treasures of Tutankhamun 1976 to the Spring 1979, #243, 10"h x 6"w

200-400

❖ 3283

Boehm Porcelain Treasures of Tutankhamun "The Harpooner"

Numbered Limited Edition Boehm The Harpooner. Courtesy of The Egyptian Museum, Cairo for the United States Bicentennial with the Exhibition of the Treasures of Tutankhamun 1976 to the Spring 1979, #104, 16.5"h x 17"w

200-400

3284

Boehm Porcelain Treasures of Tutankhamun "Falcon Emblems"

Numbered Limited Edition Boehm Falcon Emblems. Courtesy of The Egyptian Museum, Cairo for the United States Bicentennial with the Exhibition of the Treasures of Tutankhamun 1976 to the Spring 1979, #210, 10"h x 10"w

200-400

❖ 3285

Boehm Porcelain Treasures of Tutankhamun "Falcon Head"

Numbered Limited Edition Boehm Falcon Head. Courtesy of The Egyptian Museum, Cairo for the United States Bicentennial with the Exhibition of the Treasures of Tutankhamun 1976 to the Spring 1979, #519, 14"h x 4.5"w x 5"d

200-400

3286

Boehm Porcelain Treasures of Tutankhamun "Cheetah Head"

Numbered Limited Edition Boehm Cheetah Head. Courtesy of The Egyptian Museum, Cairo for the United States Bicentennial with the Exhibition of the Treasures of Tutankhamun 1976 to the Spring 1979, #710, 7"h x 4.5"w x 5"d

200-400

❖ 3287

Boehm Porcelain Treasures of Tutankhamun "Goddess Bastet"

Numbered Limited Edition Boehm Goddess Bastet. Courtesy of The Egyptian Museum, Cairo for the United States Bicentennial with the Exhibition of the Treasures of Tutankhamun 1976 to the Spring 1979, #452. 10"h x 4"h x 6.5"d

200-400

❖ 3288

Boehm Porcelain Treasures of Tutankhamun "Perfume Box"

Numbered Limited Edition Boehm Perfume Box. Courtesy of The Egyptian Museum, Cairo for the United States Bicentennial with the Exhibition of the Treasures of Tutankhamun 1976 to the Spring 1979, #21. 6.5"h x 4"w x 2"d

200-400

❖ 3289

Boehm Porcelain Treasures of Tutankhamun "Goddess Selket"

Numbered Limited Edition Boehm Goddess Selket. Courtesy of The Egyptian Museum, Cairo for the United States Bicentennial with the Exhibition of the Treasures of Tutankhamun 1976 to the Spring 1979, #156. 17"h x 11"w

200-400

3290

Boehm Porcelain Treasures of Tutankhamun "God Anubis"

Numbered Limited Edition Boehm God Anubis. Courtesy of The Egyptian Museum, Cairo for the United States Bicentennial with the Exhibition of the Treasures of Tutankhamun 1976 to the Spring 1979, #210. 13.5"h x 9"w

200-400

3291

Boehm Porcelain Treasures of Tutankhamun "Golden Throne Relief"

Numbered Limited Edition Boehm Golden Throne Relief. Courtesy of The Egyptian Museum, Cairo for the United States Bicentennial with the Exhibition of the Treasures of Tutankhamun 1976 to the Spring 1979, #88. 12"h x 18"w

200-400

3292

Boehm Porcelain Treasures of Tutankhamun "Votive Shield Relief"

Numbered Limited Edition Boehm Votive Shield Relief. Courtesy of The Egyptian Museum, Cairo for the United States Bicentennial with the Exhibition of the Treasures of Tutankhamun 1976 to the Spring 1979, #67. 12"h x 18"w

200-400

BOEHM PORCELAIN TREASURES OF TUTANKHAMUN



3283



3279

3289



3280



3287



3278



3288



3277



3281

DECORATIVE



❖ 3293

Dimitri H. Chiparus (1886-1947, France/Romania) Dancer in Art Deco Costume

Paint decorated bronze halter and skirt over a carved chryselephantine figure mounted on marble and bronze base. Signed "D.H. Chiparus" on base. 15"h x 7"w

8000-12000

❖ 3294

Alexandre Lavasseur (20th Century, France) "Diana the Huntress"

Bronze sculpture. Signed "Lavasseur" on base. 17"h x 6.5"w

500-700

❖ 3295

Ferdinand Barbedienne Bronze Sculpture

Bronze sculpture of three children with gilt accents. Signed "F. Barbedienne Fondeur Paris". 10"h x 4.25"w

1000-1500

❖ 3296

Beatrice Fenton (1887-1983, Pennsylvania) "Dancers"

Bronze sculpture. Signed "Beatrice Fenton 1924" on base. 16"h x 8"w

500-1000

❖ 3297

Figural Bronze Sculpture

Prix de Rome bronze sculpture. Marked Pinedo Bronzier Paris. 12.75"h x 5.5"w x 4.25"d

200-400



❖ 3298

Hans Keck Bronze Sculpture

German bronze sculpture of a stonemason working on a bright piece of quartz. Stands on a black and white hexagonal base with angle, trowel and compass. Base reads Br. Potsch, H. Keck and RKB Germany. First quarter 20th c. 11.5" h x 6" w

600–900

❖ 3299

Edme Antony Paul Noel, Bronze Sculpture of a Gladiator

Signed Tony Noel #37. 11" h x 9" w

400–600

❖ 3300

C. De Maurevel Bronze Sculpture

Maiden on the rocks, waves, 8.25" h x 10" w x 6" d

300–500

❖ 3301

Francois Auguste Hippolyte Peyrol French Animalier Bronze

Lioness with verdigris patina, 9" h x 5" w

400–600

❖ 3302

Arts and Crafts Bronze Sculpture Pair of Whippets

Signed by Kirsch dated 1904. 14" h x 17.5" w x 11.75" d

600–900

DECORATIVE



❖ 3303

Salvador Dali (1904-1989, Spain/France) Figural Bronze

Painted bronze sculpture. Signed "Dali" on base, No. 41/99.
16"h x 16"w x 16"d

500-700



❖ 3304

**Klaus Ihlenfeld (b. 1934, Pennsylvania, Germany)
"PA Woodland"**

Dated 1999, welded bronze sculpture with verdigris patina.
Signed "K". 5"h x 4"d

300-500



❖ 3305

**Klaus Ihlenfeld (b. 1934,
Pennsylvania, Germany)
"Solar Energy"**

Dated 2013, welded bronze
sculpture with verdigris patina.
Signed "K". 7"h x 5"w x 4"d

300-500

❖ 3306

**Klaus Ihlenfeld (b. 1934,
Pennsylvania, Germany)
"Nature"**

Dated 2014, welded bronze
sculpture with verdigris patina.
Signed "K". 2.5"h x 6.5"w x 5.5"d

300-500



FURNITURE

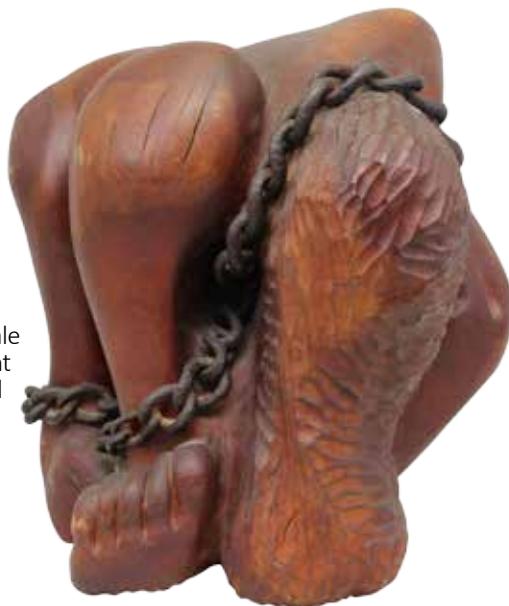


❖ 3307
Pair of Asian Male and Female Faience Figures on Pedestals
Three pieces, white glazed.
73"h x 20"w x 20"d
400-600

❖ 3309
Michael Moser Mixed Media Sculpture
Sculpted bronze and free form carved wood. 69"h x 26"w
500-700



❖ 3308
Michael Moser Mixed Media Sculpture, The Chains That Bind Us
Carved wood crouching female figural sculpture with wrought iron chains. Signed and dated "Moser 75". 18"h x 19"w
500-700





❖ 3310

Wurlitzer 850 Bubler Jukebox Player

Serial No. 784715 with vinyl records and an aviary reverse painted door. 65" h x 36" w x 26" d
Restoration ready, not operating.

1000–2000



❖ 3311

**Swiss Interchangeable
Cylinder Music Box**

Three cylinders with with six
airs and a zither mounted
comb on lyre shaped
brackets, 11" h x 28" w x 13" d
with complementing mahogany
stand, 21" h x 32" w x 17" d

1000–1500

FURNITURE



❖ 3312

Eight Day Chime Clock

Mahogany case, arched cornice with pillar columns, one door, on bun feet. Eight day brass works with nine tubular chimes and moon phase. Five chimes. 90" h x 24" w x 17" d

1500–2500

❖ 3313

Samuel Breneisen Reading Tall Case Clock

Mahogany case with broken arch pediment and three finials, spindle hood columns on a plinth base and rounded turned feet. Paint-decorated dial with 8 day brass works and moon phase. 97" h x 18" w x 12" d

1500–2500

❖ 3314

Thomas Spence Dysart Tall Case Clock

Oak casing with broken arch pediment, brass finial with reeded twisted hood on a plinth base with shaped feet. 8 day brass works with an ornate brass dial. 83" h x 20" w x 10" d

800–1200

❖ 3315

Daniel Oyster Reading Tall Case Clock

Mahogany case, broken arch pediment, reeded quarter columns with a plinth base on turned round feet. Eight day brass works with a paint decorated and moon phase dial. 92" h x 21" w x 11" d

1500–2500

❖ 3316

Arts and Crafts China Cupboard

Quarter-sawn oak with two central doors over a beveled mirror back over three graduated drawers flanked by two molded cornice beveled mirrored doors, copper fixtures. Breaks down into six pieces.
85"h x 82"w x 26"d

2000-3000



❖ 3317

Arts and Crafts Sideboard

Quarter-sawn oak with backsplash and a beveled mirror-back over a center drawer flanked by two doors. Copper motifs on square feet.
59"h x 73"w x 24"d

2000-3000



FURNITURE



❖ 3318

Victorian Rosewood Bibliotheque

Carved rice and rosette arched cornice, flamed finials, and an arched door with carved and reeded pillars over one single drawer flanked by two consoles. Architectural gallery and sea scroll relief top, reeded quarter columns, and a faux three drawer fall front bird's eye maple fitted interior. Velvet inset over four drawers on rounded bun feet. Consists of four pieces. 103"h x 88"w x 20"d

2500-4500



❖ 3319

Art Nouveau Partner's Desk

Mahogany with three frieze drawers on each side and a leather inset top on tapered molded legs. 30"h x 74"w x 49.5"d

600-900



❖ 3320

English Walnut Tavern Table

Three board top with tenon through construction, two drawers on block and turned legs with a trestle base. 31.5"h x 64.5"w x 26.5"d

800-1200



❖ 3321
**Pennsylvania Federal
Cherrywood Corner
Cupboard**
Twelve lite door over two
doors on shaped feet.
90"h x 42"w x 20"d
600-900



❖ 3323
**(2) Pair of Ornate
Dragon Andirons**
Brass and Iron,
ball and claw feet.
26.5"h x 13"w x 21"d
600-900

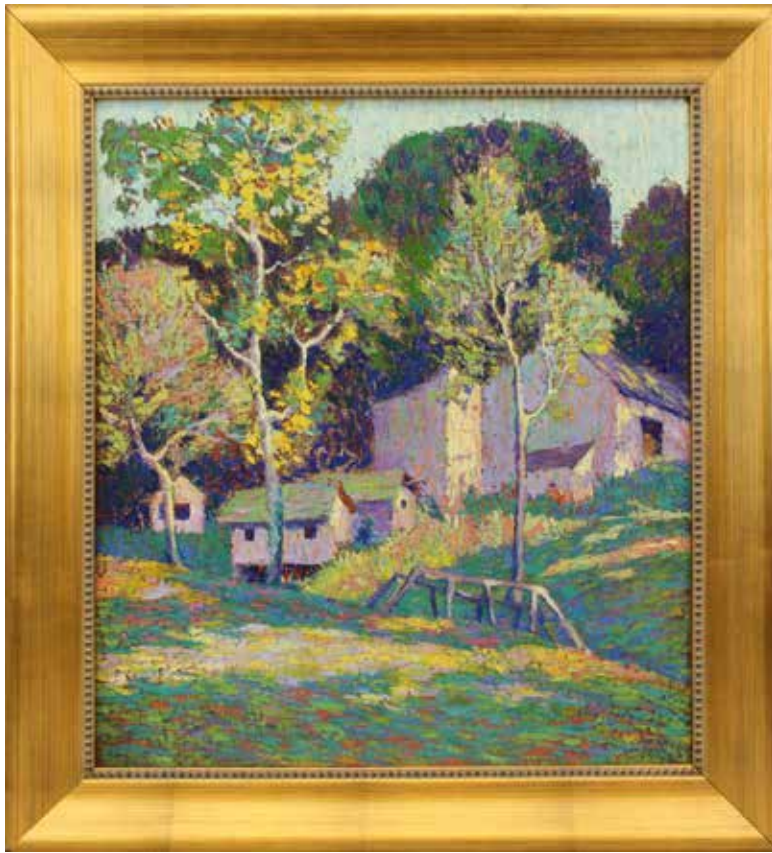


❖ 3324
**(2) Pair of Federal
Brass Andirons**
Urn finial tops on
ball and claw feet.
27"h x 14"w x 26"d
400-600



❖ 3322
**Chippendale Tiger Maple
Chest of Drawers**
Molded top, reeded columns
with four graduated drawers
on ogee bracket feet.
34.5" h x 39.5" w x 21.5"d
1500-2500

FINE ART



3325



3326



3329

❖ 3325

**Frances Lichten
(1889-1961, Pennsylvania)
"Creeping Shadows"**

Oil on board. Signed "Frances Lichten" in lower right. Title and signed with Plastic Club 1927 Exhibition label on verso.
20"h x 18"w

600-900

❖ 3326

**Frances Lichten
(1889-1961, Pennsylvania)
"The Deserted Village"**

Oil on board, signed "Frances Lichten" lower left. Title on verso.
17.5"h x 15.5"w

400-600

3327

**Frances Lichten
(1889-1961, Pennsylvania)
"Country Store"**

Oil on board, signed "Frances Lichten" lower right. Title on verso. 15"h x 17"w

400-600

3328

**Sterling Strauser
(1907-1995, Pennsylvania)**

Pair of floral still life, oil on board. Signed "Strauser '65" in lower left and right. Each 36"h x 8"w

200-400

❖ 3329

**H. Vance Swope
(1879-1926, Indiana),
"River Street"**

Oil on board. Signed, "H. Vance Swope" in lower right. Titled and inscribed, "River Street, H. Vance Swope" on verso.
10"h x 10"w

400-600



3330



3333



❖ 3332

**Ray Overpeck
(b. 1933, Pennsylvania)
"Bridge on the Delaware"**

Oil on canvas. Signed "R. Overpeck" in lower right. Titled and signed on verso. 20"h x 24"w

1200-1800

❖ 3330

**Franklin DeHaven
(1856-1934, New York, PA,
CT, IN) "Old Wood Sled"**

Oil on panel fall landscape. Signed "DeHaven" in lower left. Title on verso. Label retained from the Salmagundi Club from the Thumb-box Exhibition. 8"h x 11"w

600-900

3331

**Albert Van Neese Greene
(1887-1971, Pennsylvania)
"Winter Landscape"**

Oil on board. Signed lower right. 8"h x 10"w

300-500

❖ 3333

**Ray Overpeck
(b. 1933, Pennsylvania)
"Above River"**

Oil on board. Signed "R. Overpeck" in lower right. Titled and signed on verso. 12"h x 16"w

600-900

3334

**Ray Overpeck
(b. 1933, Pennsylvania)
"The Red Bridge"**

Acrylic on board. Signed "R. Overpeck" in lower right. Titled and signed on verso. 14"h x 18"w

600-900

FINE ART



3335



3340



3337



3343

❖ 3335
Mildred S. Gehman (1908-2006, Pennsylvania)
Winter Riverscape
 Oil on board. Signed "M. Gehman" in lower left. Dedication on verso, dated 1958. 4"h x 5"w
300-500

3336
Mildred S. Gehman (1908-2006, Pennsylvania)
Snowy Riverbank
 Oil on board. Signed "M. Gehman" in lower left. 4"h x 5"w
300-500

❖ 3337
Mildred S. Gehman (1908-2006, Pennsylvania)
Snowy Road
 Oil on board. Signed "Mildred S. Gehman" in lower left. 4"h x 5"w
500-700

3338
Mildred S. Gehman (1908-2006, Pennsylvania)
Farmscape
 Oil on board. Signed "Mildred S. Gehman" in lower left. 9"h x 12"w
400-600

3339
Mildred S. Gehman (1908-2006, Pennsylvania)
Farmhouse
 Oil on board. Signed lower right. 9"h x 12"w
300-500

❖ 3340
Ranulph Bye (1916-2003, Pennsylvania/New Jersey)
"The Mill Traugers No. 3"
 Watercolor on paper. Signed "Ranulph Bye" in lower right. Unframed. Titled and dated "Dec. 9, 1989" on verso. 15.5"h x 24"w
600-900

3341
Ranulph Bye (1916-2003, Pennsylvania/New Jersey)
"The Howel Farm"
 Watercolor, signed "Ranulph Bye" in lower right. Title and dated, November 1988 on verso. 14"h x 21"w
600-900

3342

**Ranulph Bye (1916-2003,
Pennsylvania/New Jersey)
"Spruce Head, ME"**

Watercolor on paper. Signed
"Ranulph Bye" in lower left.
Title and dated Aug. 7, 1993
on verso. 10"h x 14"w

600-900



3344

❖ 3343

**Ranulph Bye (1916-2003,
Pennsylvania/New Jersey)
Church Yard**

Watercolor on paper, signed
"Ranulph Bye" in lower left.
14"h x 21"w

600-900

❖ 3344

**Ben Austrian (1870-1921,
Pennsylvania, Florida)
Luminous Pastoral
Landscape**

Oil on board. Signed
"Ben Austrian" lower left
dated 1915. Signed on verso.
11"h x 14"w

1000-2000



3345

❖ 3345

**Benard Badura (1896-1986,
Pennsylvania) "Haystacks,
Bucks County, PA"**

Oil on canvas. Signed
"Ben Badura" on verso.
25"h x 30"w. Complemented
by a reproduction gilt frame.

1500-2500



❖ 3346

**Jean Halter
(Pennsylvania 1916-1981)
Bucks County Barnyard**

Multiple figures and animals.
Oil on canvas. Signed and dated
"J. Halter 1956". 28"h x 42"w

3000-5000

FINE ART



3347



3349



3348



3350

❖ 3347
**Walter Emerson Baum
 (1884-1956, Pennsylvania)
 Pennsylvania Winter Village**
 Oil on masonite. Signed
 "W. E. Baum" in both lower right
 and left. 10"h x 13.5"w
1500-2500

❖ 3348
**Walter Emerson Baum
 (1884-1956, Pennsylvania)
 Village Winter**
 Oil on board. Signed
 "W.E. Baum" in lower right.
 16"h x 20"w
1500-2500

❖ 3349
**Walter Emerson Baum
 (1884-1956, Pennsylvania)
 "Lehigh Mountain Near
 Allentown"**
 Oil on canvas. Signed lower right.
 Signed and titled on verso.
 16"h x 20"w
2000-3000

❖ 3350
**Maximillian Vanka
 (1889-1963) Bucks County
 Landscape**
 Oil on board. Signed "Maxo
 Vanka" On verso. From the Estate
 of Kenneth and Helen Gemmill,
 Bucks County, PA. 20"h x 24"w
1000-1500



❖ 3352

**George W. Sotter
(1879-1953, Pennsylvania)**

Winter Nocturnal Landscape

Stucco house with candle light emerging through the windows. Oil on board. Signed and dated 1925 on verso. Provenance: Estate of Charles Hargens. 8.5"h x 10"w

4000-6000



3353



3354

3351

**Daniel Garber
(1880-1958, Pennsylvania,
Ohio, Indiana)**
"From Copper Nose Hill"

Etching. Pencil Signed "Daniel Garber" in lower right, plate signed lower left. Foxing along upper right border. 6"h x 5"w

400-600

❖ 3353

**Henry Bayley Snell
(1858-1943, Pennsylvania,
NY, New England)**
"Repairing the Docks"

Oil on canvas over board. Signed lower left "Henry B. Snell". 12h x 13.5"w

1500-2500

❖ 3354

**Harry Leith-Ross
(1886-1973, Pennsylvania)**
"Street in Mahone Bay"
Nova Scotia

Houses with figure. Conti crayon. Framed. Signed "L-R" lower right. Titled on verso. 4"h x 9"w

300-500

3355

**Harry Leith-Ross
(1886-1973, Pennsylvania)**
"Canal Lock, New Hope"

Conte drawing. Signed "Harry Leith-Ross" and titled on verso. 5"h x 7"w

300-500

FINE ART



3356

❖ 3356
Andrew Woehrel
(b. 1958, Pennsylvania)
"Evening Ice Flow"
Delaware River

Oil on masonite. Signed "A. Woehrel" in lower left. Titled and signed, "Evening Ice Flow, New Hope, A. Woehrel 09" on verso. 15"h x 23.5"w
800-1200



3357

❖ 3357
John J. Dull
(1859-1949, Pennsylvania)
"Broad and Chestnut Philadelphia"

Watercolor including cars, people, and flags. Signed "Dull" in lower right. Titled and dated 1945 on verso. Retains exhibition label from The Woodmere Museum. 4.5"h x 5.5"w
200-400

❖ 3358
19th c. Miniature Portrait, Madame Lebrun, Female Artist at Her Easel

Portrait on porcelain. Framed in an Italian gilt carved frame, 8.5"h x 7"w overall, 5"h x 3"w porcelain.
300-500



3358

3359
19th c. Miniature Portrait, "Countess de Beauchamp"

Signed "Bruney". Woman identified as Countess de Beauchamp on verso. 7.25"h x 7.25"w overall
300-500

❖ 3360
Important Baltimore Family Archive w/ Attributed, Peale Portrait

Important Baltimore archive of the Stuart Family containing two oil on canvas paintings (one attributed to Rembrandt Peale), a Stuart family Bible, and documents related to the patriarch's military service in early 19th century Baltimore. Grouping includes; 1.) Large (30" x 24.5") Oil on canvas portrait of a gentleman (Stuart family member) attributed to Rembrandt Peale (Noted American portrait painter (1778-1860). 2.) Small (7" x 6") Oil on canvas portrait of a gentleman (Stuart family member). 3.) Family Bible of the Stuart family of Baltimore containing family record notations and ephemeral items documenting births, deaths, and other events. Bible printed by Carey in Philadelphia in 1816. 4.) Grouping of three framed documents regarding James Stuart Sr. military service in the Baltimore (Maryland) militia in the early 19th century. For additional information please request detailed listing.
5000-7000

3361
James Denison Colt (1797-1822, Connecticut and Massachusetts), Portrait of a Gentlemen

Oil on board. Unsigned. 29"h x 24"w
400-600



FINE ART

❖ 3362

18th Century Portait of Gentlemen

Oil on canvas laid on board. Complementing period frame. 26"h x 24"w. Relined and restored.

600-900

3363

Lot of (8) William Russell Birch (1755-1834, Philadelphia/United Kingdom) Engravings

Titles include "Bank of the United States, in Third Street Philadelphia", "Third Street Philadelphia-Showing The Ledger, and Jayne's Buildings", "Bank of Pennsylvania, South Second Street, Philadelphia", "High Street Market, Philadelphia", "Jail in Walnut Street Philadelphia", "Arch Street Ferry, Philadelphia", "An Unfinished House, in Chestnut Street Philadelphia", "Girard College". Pieces exhibit foxing and repair.

1000-1500

❖ 3364

Christopher Willett (b. 1958, Pennsylvania) "Upper Bucks County, Sellersville, PA"

Oil on board. Signed "Christopher Willett" in lower right. Title and signed on verso. 4.75"h x 5"w

200-400

3365

Christopher Willett (b. 1958, Pennsylvania) "Green Hill Farm"

Oil on board. Signed "Christopher Willett" in lower right. Title and signed on verso. 5" h x 6"w

200-400

❖ 3366

Christopher Willett (b. 1958, Pennsylvania) "McKinkle Tavern, Washington Crossing, Bucks County, PA"

Oil on board. Signed "Christopher Willett" in lower right. Title and signed on verso. 5"h x 4.75"w

200-400

3367

Christopher Willett (b. 1958, Pennsylvania) "Lancaster County"

Oil on board. Signed "Christopher Willett" on lower right. Title on verso. 6"h x 5"w

200-400

3368

Christopher Willett (b. 1958, Philadelphia) "Buckingham Friends Meeting House Bucks County"

Oil on board. Signed "Christopher Willett" in lower right. Title and signed on verso. 4"h x 5"w.

200-400

❖ 3369

Louis Sabattier (1863-1935, France) Lady in the Garden

Oil on board. Signed, "L. Sabattier" in lower right 10"h x 5"w

1000-2000

3370

Vladimir Stribny (1905-1970, Czech Republic) "Dick"

Oil on canvas. Signed "V Stribny" and titled "Dick" and dated "1929" in lower right. 18"h x 13.75"w

600-800



3362



3364



3366



3369

3371
**Walter Emerson Baum
(1884-1956, Pennsylvania)
"Blond Boy"**

Oil on board. Signed
"W.E. Baum" in lower left. Titled
on DaVinci Alliance label on
verso. Newspaper clipping, dated
February 14, 1943, including
mention of Baum's work.
9.5"h x 7.5"w

400-600

3372
**Walter Emerson Baum
(1884-1956, Pennsylvania)
Portrait of Girl in Red**

Watercolor. Signed
"W.E. Baum" in lower right.
8"h x 6"w

200-400

❖ 3373
Vendor at the Fair

Oil on board. Signed lower right,
illegible. Complemented by a
19th c. frame. 9.5" h x 7.5"w

1000-2000

❖ 3374
**Betty Minucci
(20th Century, Pennsylvania)
"Tinicum Mill"**

Oil on board. Signed
"B. Minucci" in lower right.
Title on verso. 9"h x 12"w

400-600

3375
**Betty Minucci
(20th Century, Pennsylvania)
"Open Door Barn", Winter**

Oil on board. Signed
"B. Minucci" lower right.
Title on verso 8"h x 10"w

300-500

3376
**Betty Minucci
(20th Century, Pennsylvania)
"Snow on Old Easton Road"**

Oil on board. Signed
"B. Minucci" in lower right.
Title on verso. 16"h x 20"w

400-600



3373



3374

FINE ART

3377

**Martha Sperling
(20th Century, New Hope, PA)
"Red Hat" Winter Street Scene**

Forrest Grove, PA. Oil on canvas.
Signed "Sperling" lower left. Accepted into
the Phillips' Mill 88th Juried Art Exhibition,
New Hope, PA. 18"h x 20"w

300-500

3378

**Martha Sperling
(20th Century, New Hope, PA)
"Children on the Beach"**

Oil on canvas. Signed, "Sperling" in lower
left. Title and signed on verso. Accepted into
the Phillips' Mill 88th Juried Art Exhibition,
New Hope, PA. 12"h x 16"w

200-400



❖ 3380

**Donald Stanley Vogel
(1917-2004, Wisconsin)
"In the Garden"**

Oil on masonite. Signed
"D. Vogel" lower right.
Complemented by an Arts
and Crafts gilt frame. Retains
Philadelphia Sketch Club
Exhibition Label. 24"h x 30"w

600-900



❖ 3381

**Kelley Millet
(21st Century, New York)
"The Dragon"**

Acrylic on canvas. Signed "KM" lower left.
Tilted and dated 3-13 on verso. 48"h x 60"w

500-700

❖ 3379

**George Lafayette Clough
(1824-1901, New York)
"River Valley Landscape with Elk"**

Oil on canvas. Signed G.L. Clough in
lower left. 25"h x 16"w

4000-6000



❖ 3382
Kelley Millet
(21st Century, New York)
"Black Moon"
 Acrylic on canvas.
 Signed "KM" lower right.
 Title and signed on verso.
 48"h x 48"w
400-600



❖ 3385
Sol Lewitt
(1928-2007, American)
"Double Cubes in Grays and Colors Superimposed"
 Screen print. Signed "Lewitt" in lower right,
 No. 5/150. Unframed. 20"h x 33"w
800-1200

3383
Kelley Millet
(21st Century, New York)
"Women"
 Acrylic on canvas. Signed "KM" lower right.
 Title and signed on verso. 48"h x 24"w
300-500



❖ 3386
Aubrey Beardsley
"The Lysistrata of Aristophanes" Collotypes
 Includes (4) Aubrey Beardsley collotypes. Beardsley created these to illustrate the Greek comic play "Lysistrata" for a privately printed edition for Leonard Smithers in 1896 and reprinted in 1926 in either London or Paris. Collotypes include: The Examination of the Herald, The Toilet of Lampito, Lysistrata Defending the Acropolis, and Cynesias Entreating Myrrhina to Coition. All have AB watermark.
 13.75"h x 10.25"w framed
800-1200

3387
Aubrey Beardsley
"The Lysistrata of Aristophanes" Collotypes
 Includes (4) Aubrey Beardsley collotypes. Beardsley created these to illustrate the Greek comic play "Lysistrata" for a privately printed edition for Leonard Smithers in 1896 and reprinted in 1926 in either London or Paris. Collotypes include: Lysistrata Haranguing the Athenian Women, Lysistrata Shielding her Coynte, Two Athenian Women in Distress, and The Lacedonian Ambassadors. All have AB watermark.
 13.75"h x 10.25"w framed
800-1200



❖ 3384
Max Herman Pechstein
(1881-1955, Germany)
The Scribe
 Watercolor and ink on paper. Signed "HMP" in lower left center.
 13"h x 17"w
2000-4000

FINE ART



3389

3388
Salvador Dali
(1904-1989, Spain/France)
"The Earth Goddess"

Lithograph of "The Earth Goddess ou Le Restaurateur". Pencil signed "Dali" and numbered (I 22/150). 28"h x 20"w
500-800

❖ 3389
Salvador Dali
(1904-1989, Spain/France)
"Chevailier Surrealiste"

Lithograph. Pencil signed "Dali" lower right. COA from Bowles/Hopkins and signed by Franklin Bowles, issue No. 326/700, and dated 1980 on verso. 26"h x 18"w
600-900

3390
Salvador Dali
(1904-1989, Spain/France)
"Laser Unicorn"

Lithograph of "Conquest of Cosmos: The Laser Unicorn Disintegrates the Horns of the Cosmic Rhinoceros". Pencil signed "Dali" in lower right. No. 74/195 marked in Roman numerals. 36"h x 24"w
200-400

❖ 3392
Richard Taicher
(1929-1989, Philadelphia, PA)
"January the 3rd"

Oil on canvas. Signed "Taicher" in lower right. Title on verso. 40"h x 24"w
300-500

3393
Richard Taicher
(1929-1989, Philadelphia, PA)
"The Mummer"

Oil on canvas. Signed "Taicher" in lower left. Title on verso. 28"h x 22"w
300-500

❖ 3394
Richard Taicher
(1929-1989, Philadelphia, PA)
"Guitar Lessons"

Oil on canvas. Signed "Taicher" in lower left. Titled on verso. 35.5"h x 23.5"w
300-500

❖ 3395
Richard Taicher
(1929-1989, Philadelphia, PA)
"Musician"

Oil on canvas. Signed "Taicher" in lower left. Title on verso. 19.5"h x 23.5"w
300-500



❖ 3391

Attributed to Theodore Gericault
(1791-1824, France)
"Peasant Woman and Peasant Man"

Mixed media and chalk. Pencil signed lower right on female and lower right on male. Exhibits heavy foxing. 11"h x 8.25"w female, 11.75h x 9"w male
3000-5000



3394



3395



3399

3396
Richard Taicher
(1929-1989, Philadelphia, PA)
"Othello"
Oil on canvas. Signed "Taicher" in lower left. Titled on verso. 30"h x 24"w
300-500

3397
Richard Taicher
(1929-1989, Philadelphia, PA)
Portrait
Oil on canvas. Signed "Taicher" in lower left. 9.5"h x 7.5"w
100-200

3398
Richard Taicher
(1929-1989, Philadelphia, PA)
Soldiers
Oil on board. Signed "Taicher" lower right. 23.5"h x 18.5"w
300-500

❖ 3399
Richard Taicher
(1929-1989, Philadelphia, PA)
Staircases
Oil on canvas. Signed "R. Taicher 55" in lower right. 22"h x 30"w
300-500

Terms & Conditions of Sale

Alderfer Auction, 501 Fairgrounds Road, Hatfield, PA 19440. 215.393.3000

Buyers must register for a bidding number by giving name, address, phone number, and identification acceptable to us. Please show your bidding number to the auctioneer after each purchase you make.

The highest bidder shall be the buyer, and if any dispute arises between two or more bidders, the auctioneer shall decide the buyer or immediately put the item up for sale again. In the event of a tie between online bidder and the floor bidder, the floor bidder will take precedence. The auctioneer's decision will be binding and final.

Some lots are offered subject to a reserve, which is a confidential minimum price below which such a lot will not be sold.

The record of sale, kept by the auctioneer and clerk, will be taken as absolute and final in all disputes.

Catalog Auctions will include a Buyer's Premium of 20% with a 3% discount if paid with cash or acceptable check. Acceptable forms of payment for all in-house purchases are cash, bank check, AmEx, Visa, MasterCard, Discover and PayPal. For online bidders, the Buyer's Premium is 25%. Discounts do not apply to online purchases regardless of the form of payment.

Items purchased may be removed once payment is made. All items purchased by in-house bidders should be removed on the day of the auction. Online buyers who wish to pick up their purchases shall not do so until the Monday following the day of the auction.

Storage fees for any items left at the Auction Center for more than two weeks following the auction date will incur storage fees at a rate of \$10.00 per lot, per week regardless of the size or value of the lot. Storage fees will begin on the 15th day regardless of payment status.

Abandoned merchandise of unpaid items still remaining at our Auction Center 30 calendar days after the auction date will be considered abandoned and will be consigned to a future auction without additional notice to the purchaser.

Announcements made day of Auction take precedence over printed, electronic and verbal communication.

Absentee/Phone Bids

For those unable to attend the auction, Alderfer Auction offers the absentee and phone bid services as a convenience to our patrons.

- Everyone leaving an absentee/phone bid must be willing to leave their credit card number to assure payment of a successful bid(s) is received by the end of the next day following an auction.
- Minimum absentee bid is \$50.00. All bids will open at \$50.00.
- Phone bids will open at \$250 or half of published estimate.
- Illegible bid(s) will be disregarded.
- Applicable sales tax will be added to the sales total unless a tax-exempt number is on file in our office by the day of the auction.
- Applicable Buyer's Premium will be added to each purchase.
- All successful bid(s) requested to be shipped to the buyer will be sent by an in-house or third party shipper and billed by the shipper.
- Buyer is responsible to make shipping arrangements.

- Bids are executed in competition with the audience on an alternate basis. Due to uncertainties of bidding, a lot may sell to the

audience for the same amount authorized by the absentee bid. To avoid this possibility, the absentee bidder may authorize Alderfer Auction to increase their bid by one increment by placing a (+) sign beside the bid price.

- Merchandise is to be removed from the Auction Center within two weeks following the auction.
- **Storage fees:** Any items left at the auction center for more than two weeks following the auction date will incur storage fees at a rate of \$10.00 per lot, per week regardless of the size or value of the lot. Storage fees will begin on the 15th day regardless of payment status
- Alderfer Auction offers the absentee/phone bid service as a convenience to our patrons who are unable to attend the auction.
- Alderfer Auction will not be held responsible for error or failure to execute the bid.
- All items are sold as is without warranty or guarantee.

Glossary of Terms

If we say "circa" a certain date, then it was made within 25 years of that date.

Measurements are given within 1" of actual size.

If we say "no defects observed", we mean that upon visual inspection we saw no defects.

Authorship*

Name of Artist – Indicates the work, in our best judgment, is by the named artist. *There is no guarantee the work is by the named artist.

Attributed to* - In our best judgment, the work may be by the artist.

Circle of * - In our best judgment, the work may be by the artist and closely related to the artist's style.

School of * - In our best judgment, a work by a pupil or follower of the artist.

In our best judgment, a copy of the known work of the artist.

In the manner of * - This painting represents the style of the names artist but was painted at a later date; the authorship is unknown.

Signature

The signature, inscriptions and dates are transcribed in print as they appear and are located as follows:

- SLL: Signed Lower Left
- SLR: Signed Lower Right
- SUL: Signed Upper Left
- SUR: Signed Upper Right
- SLC: Signed Lower Corner
- SUC: Signed Upper Corner

If we state "signed" in our opinion, the signature is of the named artist.

If we state "bears signature" in our opinion, the signature might be that of the artist, but we make no guarantee that work is by the named artist.

WAF = With All Faults

For Furniture

If we say "Chippendale Mahogany Chest of Drawers," we represent that the piece was made during that period.

If we say "Chippendale Style Mahogany Chest of Drawers," we represent that the piece looks like the period mentioned, but it was crafted at a later date.

Bid Increment Table

Minimum Dollar Amount Maximum Dollar Amount Bid Increment

from US \$0 to US \$49 US \$5

from US \$50 to US \$199 US \$10

from US \$200 to US \$499 US \$25

from US \$500 to US \$999 US \$50

from US \$1,000 to US \$1,999 US \$100

from US \$2,000 to US \$4,999 US \$250

from US \$5,000 to US \$9,999 US \$500

from US \$10,000 to US \$19,999 US \$1,000

from US \$20,000 to US \$49,999 US \$2,500

from US \$50,000 to US \$99,999 US \$5,000

from US \$100,000 to and above Auctioneer's Discretion

Variations from the bid Increment Table are at the discretion of the auctioneer.

Directions & Lodging

Free shuttle service from Lansdale Train Station available. Call Alderfer's for details. 24 hour notice required.

From PA Turnpike

Take Exit 31 "Lansdale" off 476. Left on Rt. 63 (Sumneytown Pike). Left at light (Forty Foot Rd). 3 miles to Clemens Rd. Left on Clemens Rd. Right on Fairgrounds Rd.

From Philadelphia

Rt. 309 North to Montgomeryville. Left on Rt. 463 (Cowpath Rd). 4 miles to Fairgrounds Rd. Left on Fairgrounds Rd.

From Allentown

Rt. 309 South to Souderton. Exit (Rt. 113). Right on Board Street. 3 miles to Cowpath Rd. Left on Cowpath Rd. approx. 2 miles to Fairgrounds Rd. Right on Fairgrounds Rd.

Lodging:

Holiday Inn
1750 Sumneytown Pike
Route 63 & PA Turnpike
Kulpsville, PA 19443
215.368-3800

Marriot Courtyard
1737 Sumneytown Pike
Route 63 & PA Turnpike
Lansdale, PA 19446

Joseph Ambler Inn
Bed & Breakfast
105 Horsham Road
Montgomeryville, PA 18936
215-362-7500

Absentee bids welcome and can be viewed & submitted at AlderferAuction.com



Inside Back Cover (Clockwise from top right): 3026, 3164, 3183, 3189, 3318, 3100, and 3347
 Outside Back Cover (Clockwise from top right): 3152, 3081, 3193, 3079, 3298, 3060, 3211, and 3165



AlderferAuction.com
FineArt@AlderferAuction.com

