

THE HELLYER COLLECTION

August 23 | 2018



ALDERFER
AUCTION

AUCTION | APPRAISAL | DOWNSIZING | REAL ESTATE



281
Jacob A. Pfeiffer



173
Louis-Albert Lefevre



66
**French Figural Gilded
Bronze Mantel Clock**

Front Cover:
118
French Bronze Mantel Clock

AUCTION DETAILS

The Hellyer Collection

Thursday, August 23rd at 12:00 Noon
Bid Live at Alderfer Auction & Online at
AlderferAuction.com

The Hellyer Collection Preview

Saturday, August 18th from 9:00AM – 12:00 Noon
Monday, August 20th from 9:00AM – 4:00PM
Tuesday, August 21st from 9:00AM – 4:00PM
Wednesday, August 22nd from 9:00AM – 4:00PM
Thursday, August 23rd at 8:00AM

Inquiries

AlderferAuction.com
FineArt@AlderferAuction.com
ConditionReport@AlderferAuction.com
215.393.3000 Phone



Download our App



Like Us at @AlderferAuction
Members of: NAA & PAA; Designations CAI, MPPA & CES; USPAP Compliant.
AY002260



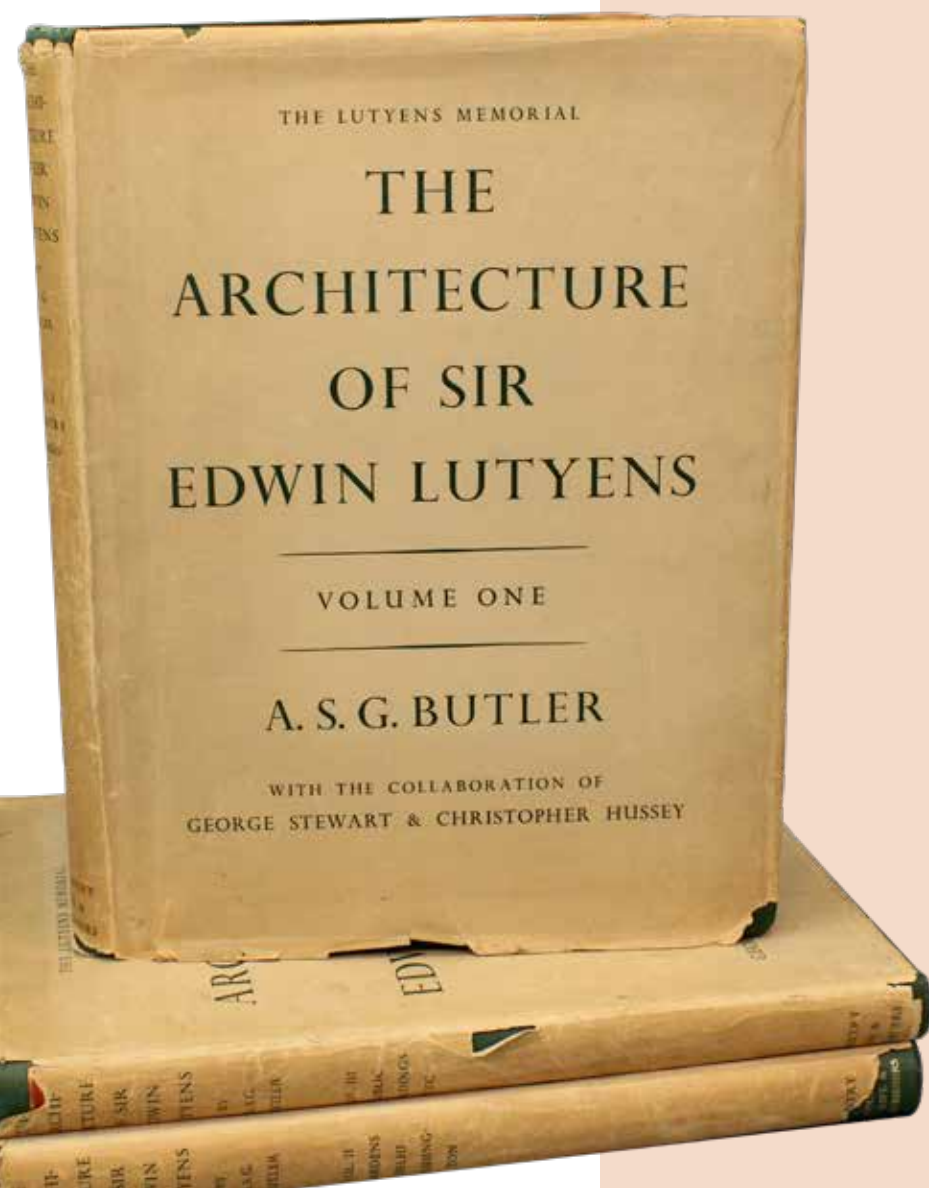
501 Fairgrounds Road | Hatfield, Pennsylvania 19440 | AlderferAuction.com | 215-393-3000



In Memoriam of James David "Jay" Hellyer Jr. and his Estate of Wyndmoor, PA.

Jay was a founder of Hellyer Lewis, Inc. an architectural and interior design firm in Philadelphia, PA. He was a member of the Rittenhouse Club and Franklin Inn Club. Jay was an avid gardener and kept an impressive English garden on his grounds. He was a bibliophile, enjoying a variety of writings in his free time. Jay also had a great love for animals and was a great supporter of the Pennsylvania SPCA.

THE HELLYER COLLECTION BOOKS



1

Howard Pyle Book Grouping NEW YORK, 1919 – 1935

"The Story of the Champions of the Round Table", 1933, price clipped dust jacket, very good condition, small tear to jacket spine; "The Story of Sir Lancelot and His Companions", 1935, price clipped dust jacket, very good condition; "The Story of the Grail", 1938, price clipped dust jacket, very good condition; "The Story of King Arthur and His Knights", price clipped dust jacket, good condition, tears to jacket, stains in top of front and end inside spine - All 4 books published by Charles Scribner's Sons; "Saint Joan of Arc", Mark Twain, Harper & Brothers Publishers, NY and London, 1919, tipped-in color plates & cover by Pyle, very good condition. 5 books total

100–200

2

Maxfield Parrish Book Grouping NEW YORK 1904 – 1919

"The Arabian Nights : Their Best-Known Tales", edited by Kate Douglas Wiggin and Nora A. Smith, Charles Scribner's Sons, 1919, partial tears in end paper, owner's Sunday School presentation in ink on pre-title page, good condition; "Poems of Childhood", Eugene Field, Charles Scribner's Sons, NY, 1904, first edition, very good condition. both with plates & covers illustrated by Maxfield Parrish

100–200



BOOKS



3

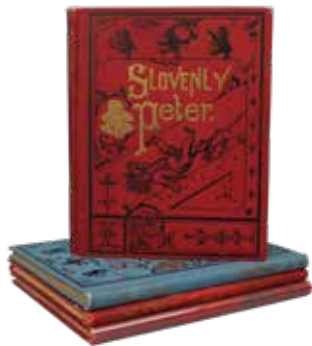
"Story of the Confederate States"

**JOSEPH T. DERRY
RICHMOND, 1895**

1st Edition, B. F. Johnson Publishing Company.

Or, "History of the War for Southern Independence", photo illustrated, former owner's name, city & date penned on title page, minor separation at frontis spine, internally clean, scuffing, minor tears and frays to binding, rippled spine

100-200



4

"Slovenly Peter, or Cheerful Stories and Funny Pictures For Good Little Folks"

**HENRY HOFFMANN PHILADELPHIA,
EARLY 20TH C.**

John C. Winston Publishing.

Hand colored illustrations, illustrated covers, 4 copies, 1 blue cover, 3 red covers, condition: 1 poor, 1 good, 2 very good

100-200

5

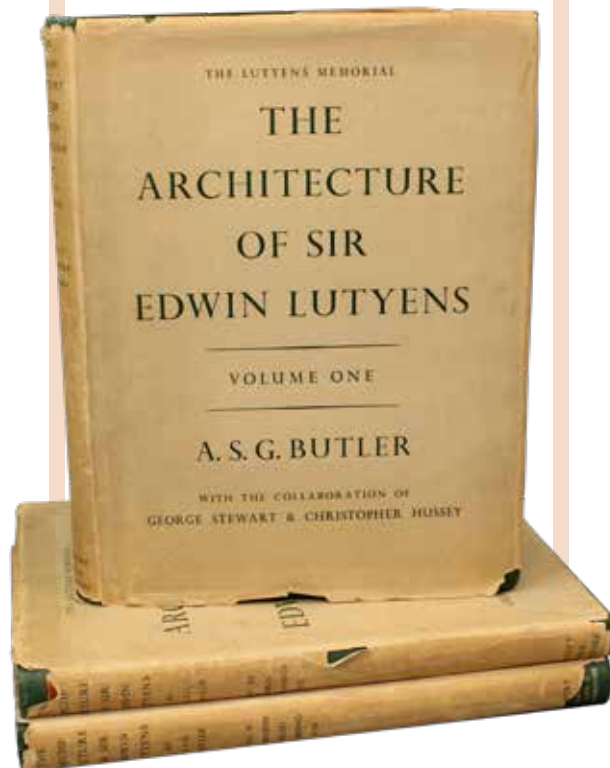
"The Architecture of Sir Edwin Lutyens The Lutyens Memorial Volumes"

**A. S. G. BUTLER WITH THE COLLABORATION OF
GEORGE STEWART & CHRISTOPHER HUSSEY
LONDON AND NY, 1950**

1st Edition

Folio Country Life Limited 3 volumes, dust jackets, black and white architectural drawings & photographic illustrations. Vol. 1, Country Houses; Vol. 2, Gardens, Lay-outs and Town-Planning, Bridges, Imperial Delhi, Johannesburg Art Gallery, The Washington Embassy, University Buildings; Vol. 3, Town and Public Buildings, Memorials, The Metropolitan Cathedral, Liverpool. Dust jackets' edges brittle and torn in places, fading to board edges, paper edges with some spotting, pen mark to underside of Vol. 1; Bindings tight

600-800



6

"Alice's Adventures in Wonderland"

LEWIS CARROL NEW YORK, 1893

New Edition

Illustrated by John Tenniel. Binding somewhat loose, separated but present front end paper. Mostly internally clean, some scuffing to binding

100-200

7

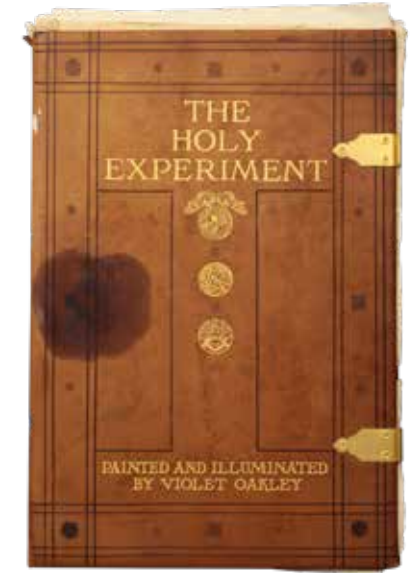
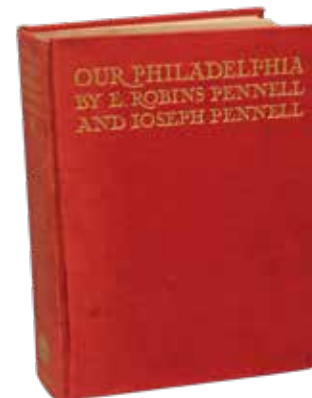
"Our Philadelphia"

**ELIZABETH ROBINS PENNELL PHILADELPHIA
AND LONDON 1914**

1st Edition, J. P. Lippincott Company

Illustrated with (105) lithographs by Joseph Pennell. Gilt lettered binding, very good condition

100-200



8

"The Holy Experiment, A Message to the World from Pennsylvania"

**VIOLET OAKLEY PRIVATELY PRINTED IN
PHILADELPHIA, 1922**

A Series of Mural Paintings by in the Governor's Reception Room and in the Senate Chamber of the State Capitol at Harrisburg, Pennsylvania, U.S.A. (22) tipped-in color plates made by the Beck Engraving Company, printed on San Marco paper, painted and illuminated by Violet Oakley. Number 70 out of 500 copies signed by Oakley. Loose pages as published, in large elephant folio binding with brass clasps. Stain on cover, internally clean

100-200

THE HELLYER COLLECTION

DECORATIVE



9

Sterling Silver "Medallion"
17 Pc. Flatware

AMERICAN, 19TH/20TH C.

Sterling silver

21.8 oz

Assembled set of (8) serving spoons,
(5) teaspoons and (4) miscellaneous pieces.

Makers vary

200-400



10

Gorham Sterling Silver "Raphael"
9 Pc. Flatware

AMERICAN, 19TH C.

Sterling silver

20.9 oz

(7) serving spoons, (1) luncheon fork and
(1) luncheon knife with sterling blade

200-400

11

Gorham Sterling Silver "Lansdowne"
39 Pc. Flatware

AMERICAN, 20TH C.

Sterling silver service for 4

40.8 oz not including knives

(4) luncheon and (4) dinner forks, (8) teaspoons,
(4) table spoons, (4) gold washed demitasse
spoons, (4) solid butters, (3) serving spoons,
(4) luncheon and (4) dinner knives

400-600



DECORATIVE



14
**Reed & Barton Sterling Silver
"Francis I" 11 Pc. Flatware**
AMERICAN, 20TH C.
Sterling silver
25.9 oz
(4) dinner forks, (4) serving spoons,
master butter, butter and bouillon spoon
300–500



15
**Reed & Barton Sterling Silver
"Love Disarmed" 25 Pc. Flatware**
AMERICAN, 19TH/20TH C.
Sterling silver
39 oz
(3) dinner forks, (4) dessert forks, (1) 8" spoon,
(4) table spoons, (4) teaspoons, (4) iced tea
spoons and (5) hollow handled knives
400–600



12
**Gorham Sterling Silver "Versailles"
13 Pc. Flatware**
AMERICAN, 19TH C.
Sterling silver
16 oz
(2) serving spoons and (11) teaspoons
100–300



13
**Towle Sterling Silver "Georgian"
27 Pc. Flatware**
AMERICAN, 19TH C.
Sterling silver
33.1 oz not including knives
(2) serving spoons, (4) table spoons, (5)
teaspoons, (10) luncheon forks and (6) hollow
handled knives
300–500



16
**Swid Powell
Candlesticks**
ITALY, 20TH C.
Silver plate
12" H
Designed by architect
Robert Stern,
hallmarked Swid
Powell, "M"
100–200

17
**Sitzendorf
Porcelain Figurine**
GERMAN, 19TH C.
Porcelain
12" H
Cockatiel, hallmarked
200–400



18
Rosa Mystica Faience Figurine
AMERICAN, 20TH C.
Faience
14" H
Hand painted and signed
300–500



19
Atlantic Terracotta Figurines
AMERICAN, 19TH C.
Atlantic
Glazed terracotta
25" H x 8" W x 4 1/2" D
Marked Atlantic Glazed terracotta figurines;
one holding urn on her shoulder and other
holding bowl with smoke
600–800

DECORATIVE



20

Pair of Urns

SPANISH, 19TH C.

Glazed terracotta
41" H x 16" Round

Pair of monumental terracotta urns in a turquoise glaze. Small hair line crack to bottom to one urn

400-600

21

19th C. Austrian Chandelier

AUSTRIAN, EMPIRE, CIRCA 1860

Brass

29 1/2" H x 17" Round

Empire Celestial globe chandelier, set in stars, embossed patinated and varnished, five arm molded glass cups, chains connecting to main shaft. One of the attached leaves to top rim is loose

800-1200



22

Pr. Cornelius and Co. Argand Lamps

AMERICAN, 19TH C.

Cornelius & Co., Philadelphia

Gilt bronze

21" H x 19" W

Pair of American gilt bronze argand lamps with urn over bracket arms set on pedestal bases mounted with etched glass globes and crystal prisms

2000-3000



23

Pr. Cornelius & Co. Argand Lamps

AMERICAN, 19TH C.

Cornelius & Co., Philadelphia

Gilt bronze

18 1/4" H x 12" W x 5 1/4" D

Pair of American, gilt bronze argand lamps with urn over bracket arms set on pedestal base with etched glass globes

1000-2000



24

Slag Glass Lamp

AMERICAN, 20TH C.

Metal

21" H x 12" W x 12" D

Triangular green glass slag lamp with floral design set on pedestal base

200-300

DECORATIVE

25

19th C. Girandoles AMERICAN, CIRCA 1860

Brass and white marble

19" H x 17" W (three arms);
18 1/2" H x 5" W (single)

Set of three girandoles; one with
three arms with prisms and two
seated figures set on a marble base,
other two with single figures and prisms
on marble bases

300–500



26

Egyptian Revival Ink Well 19TH C.

Silver plate

8 1/2" H x 13" W x 9" D

Sphinx Inkwell with cobalt blue glass inserts

400–800

27

Egyptian Revival Ink Well 19TH C.

Silver plate

8 1/2" H x 12" W x 8 1/2" D

Egyptian revival sphinx inkwell with two clear
crystal inkwells with silver lids

400–800



28

Pair of French Gilt Bronze Candlesticks FRENCH, CHARLES X, CIRCA 1820 – 1829

Gilt bronze

20" H x 10" W (including three arms)

Classical form with flame finial

400–800



30

French Gilt Bronze Jewelry Casket FRENCH, 19TH C.

Gilt bronze

7 1/2" H x 9 1/2" W x 6 1/4" D

Jewelry casket with hand fabricated and
engraved design, scrollwork, and ball feet

800–1200

31

Pompeian Bronze Bookends AMERICAN, 1920'S

Bronze-clad with polychrome finish

9 1/4" H x 4 1/2" W x 3 1/2" D

The front cover and spine of the book read Atlas
of the World with a cockatoo perched on top of
the book

50–100



29

French Bronze Candelabra

FRENCH, EMPIRE,
CIRCA 1850

Bronze

22" H x 9" W

Five arms set
on tripod feet

300–500



DECORATIVE



32

Rookwood Pottery Panther Bookends

AMERICAN, 20TH C.

Pottery

5 1/2" H x 5 1/2" W

Panthers resting within the pages of a stylized book, pottery and date mark, numbered 2564, William P. McDonald monogram underglaze

200-400

33

French Figural Ormolu Candlesticks

FRENCH, 19TH C.

Bronze and marble

11 3/4" H x 4" W

Figural woman in traditional dress

1000-1500



34

Bronze Tiger Sculpture

CHINESE, 20TH C.

Bronze

7" H x 15 1/2" W

Roaring tiger

300-500



35

Gerard Sandoz, Limoges Monkey Box

FRANCE, C. 1935

Porcelain

8 1/4" H x 4" W x 5" D

Seated monkey holding his tail, base and lid stamped "Theodore Haviland/Limoges/France/COPYRIGHT"

200-400



36

Humpty Dumpty Doorstop

AMERICAN, 20TH C.

10 1/2" H x 7 1/2" W x 5" D

Taken from the Maxfield Parrish Life Magazine Cover of March 17, 1921. Hollow back with no markings

200-300

37

Schnauzer Doorstop

AMERICAN, 20TH C.

Cast iron

16" H x 9 1/4" W x 4" D

Schnauzer on hind legs, hollow back

100-200



38

Marble Capital Pedestal

20TH C.

Marble

4 3/4" H x 5 1/4" W x 5 1/4" D

Greek column style, carved in relief

50-100



39

Pr. Figural Art Nouveau Candelabra

EUROPEAN, 19TH C.

Bronze

24 1/2" H x 7 1/2" W x 3 1/2" D

Pair of (5) arm candelabra with standing angels with spread wings

300-500

DECORATIVE



40

Queen Victoria Coronation Grouping

Porcelain

(2) enamel beakers, (2) matching teacups and saucers (one with under plate), (2) demitasse cups, and creamer

200-400



41

King Edward VII Coronation Grouping

ENGLISH, 20TH C.

Porcelain

Matching teacup, saucer, under plate bowl and creamer by Blair, blue transfer ware teapot by JBHW, (3) teacups, (2) creamers, and (2) transfer ware plates

200-400

42

King George V Coronation Grouping

ENGLISH, 20TH C.

Porcelain

(3) dinner and (1) under plate, whiskey decanter by Spode, teapot, (2) teacups and an ashtray

200-400





43

King George VI Coronation Grouping

ENGLISH, 20TH C.

Porcelain

Paragon plate, teacup and saucer, lion handled loving cup and teacup, (3) egg holders, Wedgwood mug, and a teacup

200–400



44

King Edward VIII Coronation Grouping

ENGLISH, 20TH C.

Porcelain

Paragon loving cup, teacup, Laura Knight teacup and Grindley plate

100–300

45

Queen Elizabeth II Coronation Grouping

ENGLISH, 20TH C.

Porcelain

Paragon loving cup, and Clarice Cliff teacup, saucer and under plate

100–200



THE HELLYER COLLECTION

CLOCKS



46

Oak Mantel Clock

AMERICAN, 19TH C.

Oak

43" H x 24 3/4" W x 11 1/2" D

Oak carved wood case, gold painted applied trim to top, tin face with roman numerals, missing finial

200-400



47

French Ormolu Mantel Clock

FRENCH, 19TH C.

Fire gilded bronze

25" H x 21" W x 7 1/2" D

Louis XVI style case with urn surmount and gilt ormolu overall decoration to body

800-1200



48

E. Hebert, Figural Ormolu Mantel Clock

FRENCH, CIRCA 1887

Fire gilded bronze, red Egyptian marble

24 1/2" H x 12" W x 9" D

With a seated figure of Thetis, signed Emile Hebert, red Egyptian marble with ormolu, clock face with roman numerals, 8 day movement maker G. S. Daille Dor

1000-2000

CLOCKS



49

Figural Bronze Mantel Clock **FRANCE, 1810**

Bronze and marble

19" H x 12" W x 8 1/2" D

Allegorical seated figure with 8 day clock, fire gilded bronze, fire gilded bronze mounts & crown, white & red Griotte marble base, and bun feet

1500-2500



50

Portico Mantel Clock **FRENCH, CIRCA 1830-1840**

Ebony and gilt

17 1/4" H x 9 1/2" W x 4 3/4" D

Louis Phillipe period, ebony case with four columns, 8 day movement with bronze face with roman numerals, gilt ormlu decoration, set on bun feet

400-600



51

Cartel Clock **FRENCH, 19TH C.**

Pot metal

24 1/2" H x 10 1/2" W x 5 1/2" D

Cartel clock with winged woman holding the clock to top. Marked J. E. Caldwell & Co., Philadelphia

300-500

52

Simon Willard Banjo Clock

AMERICAN, 19TH C.

Wood and brass

41" H x 10 3/4" W x 4" D

Simon Willard banjo clock, gold painted wood case, enamel face with roman numerals, reverse painted glass insert, urn finial to bottom. Marked S. Willard Patent

800-1200



53

Figural Ormlu Mantel Clock **FRENCH, LATE 19TH C.**

Black & Red Griotte Marble and Gilt Bronze

31 1/2" H x 11" W x 11 1/2" D

Fire gilded bronze 8 day mantel clock with black and red Griotte marble base roman numerals, two Bacchante maidens playing tambourine with a fawn (half child-half goat) all with grapes in their hands. Marked C. Ladion, L J 62

1500-2500



54

Julius Caesar Figural Gilded Bronze Mantel Clock

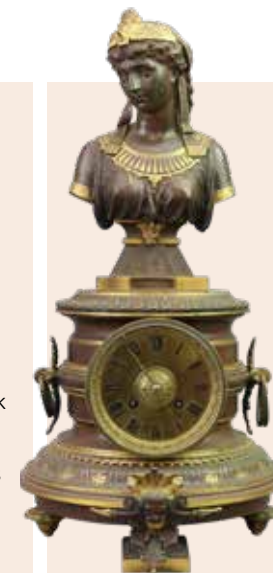
FRENCH 19TH C., POSSIBLY, NAPOLEON 3RD (1850-1870)

Fire gilded bronze, red Griotte marble and silver plate

27 1/2" H x 17" W x 11" D

Top of clock has a seated quadruple silver plate sculpture of a seated Julius Caesar with a gilt crown holding a sword, the clock dial is fire gilded bronze, silver and roman numerals, two figurative Egyptian medallions to base. Prov. Collection of Joseph Meraux, Rare and Unusual Clocks, Sothebys 1993

1500-2500



55

Cleopatra Figural French Bronze Mantel Clock

FRENCH, 19TH C.

Bronze

18 1/2" H x 9 1/2" W x 9 1/2" D

French 8 day mantel clock with Cleopatra bust to top, all bronze case with fire gilded bronze details, set on a circular base. Marked A. Lemaire, Paris, impressed 2057

1500-2500

CLOCKS

56

English Inlaid Shelf Clock ENGLISH, 20TH C.

Walnut

17" H x 10 3/4" W x 6 1/2" D

Walnut case shelf clock, 8 day movement, silent strike, enameled face with Roman numerals, brass inlaid to front, set bun feet, open glass door to back. Brookbanks & Atkins London, silent strike

200-400



57

English Bracket Clock ENGLISH, 20TH C.

Mahogany and brass

19 1/2" H x 10 3/4" W x 6 3/4" D

Mahogany case bracket clock, 8 day movement, enameled face with Roman numerals, brass inlaid trim, Greek key border detail to top and bottom and pineapple finial, glass inserted to sides and back door, floral brass ring to sides, Some chips to enamel face. Thomas Read, Bishops Gate Street London

300-600



58

Foster S. Campos Banjo Clock AMERICAN, 1977 - 1978

Foster S. Campos,
Pembroke,
Massachusetts

Mahogany, mixed
wood veneered

41" H x 10 3/4" W x
3 3/4" D

Reproduction
banjo clock, reverse
painted glass, labeled
S. Willard's Patent.
Dial with Roman
numerals, line inlaid,
eagle final on top
and presentation
bottom. Marked
Foster S. Campos,
Pembroke, Mass, S.
Willard Patent

300-600



59

French Bronze Animailler Mantel Clock FRENCH, 19TH C.

Black marble and bronze
19" H x 17" W x 7 1/2" D

Plaque with inscription, two
bronze horses to top. Clock
with Roman numerals and
marble base

800-1200

60

Architectural Mantel Clock 20TH C.

Pot metal

16" H x 13 1/2" W x 9 1/2" D

Mantel clock, 8 day works with metal face with
roman numerals. Marked, Donald, New Castle

200-400



CLOCKS



61
Westminster Wall Clock
FRENCH, 20TH C.
 Wood and metal
 27 1/2" x 11 3/4" W x 6 1/2" D
 French wall clock, carved wood case with floral top, metal face with Arabic numbers. Marked Le Veritable, Westminster
200-400



62
Egyptian Revival Gilded Bronze Mantel Clock
FRENCH, EMPIRE, CIRCA 1815
 Fire gilded bronze and marble
 15 1/2" H x 6" W x 4 1/2" D
 French Empire mantel clock with Egyptian head and rams head ormolu, 8 day movement with enameled face with roman numerals, star pendulum, set on turned feet. Marked "a Paris"
1000-2000

63
Precision Table Regulator Clock
FRENCH, 1780
 Fire gilded bronze, and crystal
 15 1/4" H x 8 3/4" W x 6" D
 Precision table four glass regulator clock, fire gilded bronze mantle clock with 8 day movement, enameled dial with roman numerals and a center second hand and a pendulum, door has curved glass. Marked Fd Berthoud, Hger DU ROY
800-1200



64
Brass Mantel Clock
FRENCH, 19TH C.
 Gilt brass and glass
 18 1/2" H x 10" W x 7 1/2" D
 Gilt brass case with beveled glass, 8 day movement with open escapement, enameled face with roman numerals. Missing pendulum, numbered 2026 on back
300-500



65
Mahogany Wall Clock
AMERICAN, 20TH C.
 Mahogany
 42" H x 11" W x 3 3/4" D
 Hand carved case, 30 hr, porcelain face with Roman numerals, reverse gilt painted glass insert. Marked Foster S. Campos Pembroke, MA
200-400



66
French Figural Gilded Bronze Mantel Clock
FRENCH, CIRCA 1820
 Fire gilded bronze and marble
 14" H x 9 1/2" W x 3 1/2" D
 Louis XVI mantel clock, seated Venus (figure) holding arrow to top, 8 day movement with porcelain face, roman numerals. Broken second hand to face
600-900



67
French Figural Gilded Bronze Mantel Clock
FRENCH, EMPIRE, CIRCA 1820
 Fire gilded bronze and marble
 23" H x 11 1/2" W x 6" D
 French Empire library mantel clock "La Lisieuse", seated figure in chair reading a book with oil lamp, 8 day movement, porcelain face with roman numerals. Slight chip to porcelain face. Marked "A Paris"
1000-2000

CLOCKS



68

Bronze and Marble Figural French Mantel Clock

PARIS FRANCE, 1785

White marble with ormolu

25 1/2" H x 12 3/4" W x 6 1/2" D

Nude sitting on raised plinth with an urn on each side. Porcelain face with Arabic numbers, the white marble Obelisk stands on six bun feet. Clock was made by Horologer to King working at the Louvre, Robin, Ser. Du Roy

2000–3000

69

Aristotle Figural Bronze Ormolu Mantel Clock

FRENCH, NAPOLEON III, CIRCA 1880

Fire gilded bronze

22 3/4" H x 8 1/2" W x 4 1/4" D

French lyre mantel clock, bust of Aristotle to top, ormolu body with four columns, clock dial and movement set in the body of the lyre, metal face with Roman numerals, back has curved glass. Marked Paris to back of clock, numbered 2823

1500–2500



70

French Jeweled Dial Ormolu Mantel Clock

FRENCH, CIRCA 1880

Fire gilded bronze

23" H x 10 1/2" W x 6" D

French lyre-form mantel clock with phoenix busts, suspending floral garlands, ornate body with stones, blue enamel base with ormolu, raised feet. Paul Sormani, marked Le Faucheur, Haria, Paris

1000–1500



71

Figural Bronze Mantel Clock

FRENCH, 19TH C.

Bronze patinated

23" H x 18" W x 11" D

Statue of Diana the Huntress. She is seated in chair holding a bow, fire gilded bronze, 8 day works, white dial with blue enamel roman numerals. Signed to base Mercier

600–900

72

Figural Gilded Bronze Mantel Clock

FRENCH, EMPIRE, CIRCA 1812

Fire gilded bronze

16 1/2" H x 5 1/2" W x 4" D

With bust of Virgil to top, 8 day works, porcelain face with Roman numerals, fire gilded bronze ormolu body, turned feet. Marked Deniere & Matelin, Fabr de bronze a Paris

400–800



CLOCKS



73

Figural Gilded Bronze Mantel Clock FRENCH, 1893 – 1913

Fire gilded bronze and white marble
16" H x 8 1/2" W x 5 1/2" D
8 day works with porcelain dial, Mother and Cupid, Time for Love, with a ribbon bow to top
1500–2500



74

Marble Mantel Clock FRENCH, 19TH C.

Marble
17" H x 12 1/2" W x 7" D
Black marble mantel clock, 8 day works, porcelain face with Roman numerals, second hand, rectangular base. Marked Tumel Paria, a Merul
200–400



75

Architectural Gilded Bronze Mantel Clock FRENCH, 19TH C.

Fire gilded bronze
24" H x 9 1/4" W x 5 1/2" D
French cathedral case with 8 day works
1500–2500



76

Le Poute, Figural Bronze Mantel Clock FRENCH, 19TH C.

Red Griotte Marble, patinated bronze and ormolu
22 1/2" H x 14" W x 6 1/2" D
Mantel clock, Eros and Psyche Studying Butterfly, Applique, on red Griotte veined marble. Marked Le Poute
1000–2000

77

F. Badet, Figural Gilded Bronze Mantel Clock FRENCH, CIRCA 1810

Fire gilded bronze and marble
15" H x 12" W x 4" D
French Empire fire gilded bronze mantel clock, seated Urania pointing to globe, green marble base with turned feet. Marked F. Badet, a Paris
2000–3000



CLOCKS

78

Vienna Regulator Wall Clock AUSTRIAN, CIRCA 1880

Walnut

50" H x 15" W x 7 1/2" D

Vienna Regulator Wall clock, Altdeutsch Style, 8 day, time and Grand Sonnerie strike, three weight driven movement in a walnut case flanked by fully turned columns with capitals and bases, two-part white enamel face with Roman numerals, both top and bottom has carved & urn finial decoration. Marked Wilhelm Kunz, Wien

300-600



79

Figural Gilded Bronze Mantel Clock

FRENCH, 19TH C.

Fire gilded bronze and marble

24 1/2" H x 16 3/4" W x 6" D

Mantel clock with a seated Spartan to top holding sword and shield, clock with Roman numerals, marble base with ormolu. Replaced clock, Marked Ravrio a Paris

500-1000



80

Portico Gilded Bronze Mantel Clock

FRENCH, CIRCA, 1820

Fire gilded bronze

17" H x 9 1/2" W x 7 1/2" D

Portico shaped mantel clock, 8 day works, porcelain face with Roman numerals, butterfly decoration to top, four columns with tassels, butterfly pendulum. Loose butterfly pendulum. Marked "a Paris"

1000-2000



81

Chopin, Figural Gilded Bronze Mantel Clock

FRENCH, PARIS, EMPIRE, 1806 - 1830

Fire gilded bronze and patinated bronze

16" H x 14" W x 5" D

Mantel clock, 8 day works, Orpheus playing a flute, with his dog Cerberus by his side, raised bun feet, oval glass dome, black patina with vine, fire gilded bronze case. Marked "Chopin a Paris"

1000-2000



82

Cupid Figural Gilded Bronze Mantel Clock

FRENCH, EMPIRE,
CIRCA 1811

Fire gilded bronze

16 1/2" H x 8 3/4" W
x 4 1/2" D

Mantel clock of Cupid carrying clock, porcelain face with Arabic numerals, set on rectangular base. Marked "Blanc Fila Palais Royal"

500-1000

CLOCKS

83

Marble Portico Mantel Clock FRANCE, 19TH C.

Bronze and marble

14" H x 9 1/2" W x 3 3/4" D

French white marble mantel clock with four columns and finials, 8 day works, enamel face with floral design & Arabic numbers, top with gilt bronze floral wreath & sun pendulum. Marked "M D Jeweds" to back

400-800



85

Complicated Dial, Marble Mantel Clock FRENCH, 19TH C.

Black marble

16" H x 9" W x 5" D

French marble mantel clock with calendar hand, date hand and phases of moon, porcelain face with Roman numerals. Marked "Patent, Brocot & Delettretz, Paris"

500-1000



84

French Marble Clock and Garnitures

FRENCH, CIRCA 1865 - 1875

Bronze and marble

24" H x 15" W x 7" D

French garniture set, center piece with urn finial and winged lion heads, 8 day works with metal face with Roman numerals, bronze and tan marble base along with two matching urns, set on block feet

500-1000



86

Gilded Bronze Mantel Clock AMERICAN, 20TH C.

Gilded bronze and marble

14" H x 14" W x 6" D

Mantel clock with incised design, open escapement, 8 day works, face with roman numerals. Marked "Shreve, Crompton & Low, Boston"

300-600



88

Marble Mantel Clock AMERICAN, 20TH C.

Black and white marble

11 3/4" H x 11" W x 6" D

Black marble mantel clock with white marble accents and scalloped detail to top, 8 day works with open escapement, face with Roman numerals and brass surround. Marked "Parker Bros., Boston"

200-400



89

Figural Mantel Clock FRENCH, 19TH C.

Pot metal

25" H x 10" W x 8" D

French figural mantel clock, depicting hunter with eagle, set on green rectangular marble base. Marked "A. Chevalier"

300-500



87

Marble Mantel Clock FRENCH, CIRCA 1860

Marble

18" H x 14 3/4" W x 5 1/2" D

French black and tan marble mantel clock, enamel face with Roman numerals, brass surround, narrow columns with pediments to base. Marked "Dobbe Jeunt, Paris"

300-600

CLOCKS



90
Diana the Huntress Figural Marble Mantel Clock
CONTINENTAL, 19TH C.

Bronze and marble
19" H x 16" W x 8" D
Figural mantel clock, depicting Diana and her dog, set on marble base

300–600



91
Figural Bronze Mantel Clock
CONTINENTAL, 19TH C.

Bronze and marble on wood base
18 1/4" H x 13 3/4" W x 6 1/2" D
Seated young male warrior with patinated shield on Greek key style base

300–600



92
Marble Mantel Clock
AMERICAN 19TH/20TH C.

Marble
12" H x 21 1/2" W x 5 1/2" D
8 day works, open escapement, enamel face with Roman numerals and open view pendulum

200–400



93
Marble Mantel Clock
FRENCH, 19TH C.

Marble
12" H x 21 1/2" W x 5 1/2" D
Tambour style, black and white mottled marble, open escapement, enamel face with Roman numerals

200–400



94
French Ormolu Portico Clock
FRENCH, 19TH C.

Gilt bronze
12" H x 12 1/2" W x 8 1/2" D
Neoclassical style clock by Deltroit, architectural flat molded cornice with a band of rosettes across the frieze on Corinthian columns, Roman numeral face, signed works

300–600

CLOCKS



95

French Ormolu Mantel Clock
FRENCH, 19TH C.

Gilt bronze
10" H x 13" W x 4" D
Miller and Son, with Roman numeral face,
pine cone and urn finials
300-600



97

Gilt Bronze Carriage Clock
FRENCH, 19TH C.

Gilt bronze
4 1/2" H x 3 1/4" W x 3" D
Scalloped cornice on Tuscan segmented columns,
chase decorated face, Arabic numerals
100-300



99

Mahogany Mantel Clock
AMERICAN, 20TH C.

Mahogany, 8 day works, enameled dial
14" H x 9" W x 6" D
Edwardian style with inlay on ball feet
100-300



101

Marble Mantel Clock
20TH C.

Black marble base
10" H x 20" W x 5" D
Classical style with 8 day works,
roman numeral enamel face upon
mottled red
100-300



96

Ebonized Inlaid Mantel Clock
FRENCH, 19TH C.

Ebonized wood
10" H x 7" W x 5 3/4" D
Mother of pearl and wire inlay, rise up door for
winding, enamel face with roman numerals
100-300



98

Brass Carriage Clock
FRENCH, 20TH C.

Brass
5 1/2" H x 3 3/4" W x 3 1/4" D
Enamel face with Roman numerals
100-300



100

Neoclassical Mantel Clock
19TH C.

Gilt and patinated metal
28" H x 22 1/2" W x 6 3/4" D
Neoclassical case with 8 day works, segmented dial
and roman numerals, flanked by twin spires with
reticulated crown finial
200-400



102

Carriage Clock
FRENCH, 19TH/20TH C.

Brass
4" H x 3" W x 2 1/2" D
Enamel face with Arabic numerals
100-200

CLOCKS

103

Marble Mantel Clock **FRENCH, 19TH C.**

Marble
12" H x 25" W x 6" D
Tambour style, 8 day works, open escapement, roman numerals, set in mottled green and black marble with decorative star accents

300–600



104

Chas. Stratton Ogee Clock **AMERICAN, 19TH C.**

Mahogany
33" H x 18" W x 6 3/4" D
8 day works with painted dial, case with reverse painted with still life and woman on stage, retains original paper label that reads in part, "Charles Stratton/Holden, Mass. 1838"

200–400



105

Marble Mantel Clock **AMERICAN, 19TH C.**

Marble and bronze
14 3/4" H x 9 1/2" W x 6 1/2" D
Bronze urn finial upon marble base with black enamel face with Roman numerals, on raised paw feet. Marked "T.K. Kerr & Bros, Philadelphia"

200–400



106

French Gilt Bronze and Marble Mantel Clock **FRENCH, 19TH C.**

Marble and gilt bronze
13 1/2" H x 6 1/4" W x 4 3/4" D
Louis XV style, enamel dial surmounted with doves and a quiver of arrows set upon white marble base accented with ribbons

200–500



107

Wall Clock, Camerer Cuss and Co. **ENGLAND, 20TH C.**

Oak
15 1/4" H x 15 1/4" W x 6 1/4" D
Roman numeral face, marked "Camerer Cuss & Co, London"

100–300

108

Crystal Regulator Clock **AMERICAN, 20TH C.**

Brass
13 1/4" H x 7 3/4" W x 6" D
Hand painted enamel face with Roman numerals, Corinthian columns and bracket feet

100–300



CLOCKS

109

**Seth Thomas,
Regulator Clock
AMERICAN, 20TH C.**

Walnut
36 1/2" H x 15 3/4" W
x 5 3/8" D

Seth Thomas wall
regulator, Roman
numeral face, weight
and pendulum driven

100–300



110

**Vienna Regulator
Wall Clock
AUSTRIAN, 20TH C.**

Oak
44 1/2" H x 15 3/4" W
x 7" D

Hand painted enamel
face with Roman numerals,
weight and pendulum
driven. Marked "Josef Geiss
Wien"

100–300

111

**International Time Clock
AMERICAN, 20TH C.**

Walnut
78" H x 17 1/2" W x 10" D
Large walnut cased regulator
clock, straight cornice to top,
hinged glazed door with a
swinging pendulum, Arabic
numbers. Marked "International
Time Recording Co., Endicott, N.Y."

200–400



112

**French Marble Mantel Clock
FRENCH, 19TH C.**

Marble and slate
18 1/2" H x 16" W x 7" D
Mottled green marble, columns with cone finials,
8 day works, open escapement,
mercury pendulum

200–400



113

**Regulator Clock
19TH C.**

Wood and brass
59" H x 16 1/2" W x
8 3/4" D
Regulator clock, carved
wood applied gallery,
porcelain face with
roman numerals, wood
case, nickel and brass
pendulum, piece of trim
missing on side

200–400

114

**French Figural Mantel Clock
FRENCH, CIRCA 1865**

Fire gilded bronze
24" H x 34" W x 14" D
French fire gilded bronze mantel clock, woman
surrounded with children to top, porcelain face
with roman numerals, floral and leaf ormolu
decoration to body, second hand to face, set
on block feet. Marked "Deniere, Ft De Bronzes,
A Paris"

400–600



115

**Ormolu Cartel Clock
FRENCH, 19TH C.**

Gilt bronze
27" H x 13 1/4" W x 5 1/2" D
White enamel dial, the shaped case
surmounted by an urn finial and applied with
laurel leaf swags. Marked "Montjoye, a Paris"

1000–2000



CLOCKS



116

French Figural Mantel Clock FRENCH, 19TH C.

Bronze and marble

16 3/4" H x 12" W x 8" D

French figural mantel clock, seated woman to top, porcelain face with Roman numerals, brass surround, black and green shaped marble base

200-400



117

French Mantel Clock FRENCH, 19TH C.

Black marble

13" H x 17 1/2" W x 6" D

French marble mantel clock, inlaid with copper details, glass door to front, porcelain face with Roman numerals, brass surround, set on shaped rectangular base. Slight damage to glass door

200-400



118

French Bronze Mantel Clock FRENCH, 19TH C.

Marble and fire gilded bronze

21 1/2" H x 15 1/2" W x 6" D

French mantel clock, 8 day works, enamel face with Arabic numerals, surmounted by flower swags and a floral urn shaped finial, movement with a sunburst pendulum, black marble column with ormolu details, set on white ornate rectangular base. Marked "Richard Paris"

1000-2000



119

French Figural Mantel Clock FRENCH, 1795 - 1800

Bronze

19" H x 10 1/2" W x 6" D

Ormolu bronze mantel clock with enamel face with Roman numerals, oval base, Hercules fighting the Nemean Lion. Clock sits on an oval wooden base with a plexiglass oval frame covering the clock. Marked "Deverbry, Paris"

1000-2000



120

Mantel clock FRENCH, EMPIRE, CIRCA 1810

Fire gilded bronze

20 1/2" H x 12" W x 7" D

French Empire Portico bronze ormolu mantel clock, four columns, gilt bronze case, porcelain face and Roman numerals, four hands off the center shaft. Marked "Chauveau, Paris"

200-500



121

Bronze Mantel Clock FRENCH, 1812 - 1820

Fire gilded bronze with black patina

23" H x 15 3/4" W x 9 1/4" D

Mantle clock with porcelain dial and Roman numerals, fire gilded bronze base, wheat and black patina figures to case, woman with child harvesting wheat at the feet, floral ornate base. Claude Hernon, Paris

400-800

CLOCKS

122

Presentation Bracket Clock **AMERICAN, 20TH C.**

25" H x 20" W x 7" H

Mahogany Case with figural columns, dial with Roman numerals, 8 day works with chime/silent setting, Presented 1902 Riverton Gun Club

400-800



124

William Gibbons, Walnut Tall Case Clock **AMERICAN, CIRCA 1820**

Walnut

94" H x 19" W x 10" D

Tall case clock, swan neck hood with arched door & turned columns with wood capitals & finial, arched trunk door with reeded quarter side columns. Arched white dial with Arabic numerals and rolling moon dial. William Gibbons Label to back of moon dial

1500-2500



125

Martin Schreiner, Lancaster Pa, Walnut Tall Case Clock **AMERICAN, 18TH C.**

Walnut

102" H x 18 1/2" W x 10" D

Broken pediment to top with urn finial & carved paterina on each, swan necks, arched dial with turned wood columns four capitals front & back of hood fully carved fluted quarter columns. 8 day works with white painted face with rolling moon dial, three hands including seconds dial with Roman numerals with four time periods of fruit decoration to the corners, two weights and a pendulum, set on bracket feet. Marked "Martin Schreiner, Lancaster, NO 29"

3000-5000



123

Oak Tall Case Clock, Westminster Chimes **AMERICAN, 19TH C.**

Oak

94" H x 27" W x 18 1/2" D

Tall case clock, stained oak case, shaped triangular pediment to top, hour strike, metal face, moon dial, Arabic numerals, three weights and a pendulum. Plaque reads "Samuel McKeever 1889 Grand Master 1899" Marked "Westminster chime" to face

2000-4000



126

Solomon Parke, Phila, Pa. Cherry Tall Case Clock **AMERICAN, PHILADELPHIA, PA, 1797 - 1801**

Cherry

94" H x 19 1/2" W x 10 1/2" D

Broken pediment to top with rosettes and urn finials to top, fully carved columns, Eight Day works, white painted face with Roman numerals three hands, carved recessed columns to case, set on bracket feet. Signed Solomon Parke Company, Philadelphia PA

3000-5000



CLOCKS



127

Daniel Sheid, Sumneytown Pa, Mahogany Tall Case Clock

AMERICAN, SUMNEYTOWN, PA, 1809 – 1860

Mahogany

88" H x 18 1/2" W x 10 1/2" D

Tall case clock, rolling moon dial, brass dial with Roman numerals, 30 hour changed to an 8 day, carved columns added shell design on doors. Marked Daniel Sheid, Sumneytown

1500–2500

128 (Not Pictured)

Tall Case Clock

AMERICAN, CIRCA 1815

Flame mahogany

98" H x 21" W x 10 1/2" D

Tall case clock, raised turned feet, turned columns to each side on trunk & base. The hood has turned columns on each side. White painted tin face, Roman numerals dial with rolling moon. Marked "Solomon Parke, Philadelphia"

2000–4000

129 (Not Pictured)

Tall Case Clock

AMERICAN, PENNSYLVANIA, CIRCA 1820

Walnut and veneered

97" H x 19 1/2" W x 10" D

Tall case clock, broken pediment to top with urn finials, fully carved quarter columns, painted face with Arabic numerals, three second hand, old weights and a pendulum, walnut case with veneered details. Marked "Michael Strieby, Greensburgh"

2000–4000

130

David Weatherly, Philadelphia, Pa. Mahogany Tall Case Clock

AMERICAN, CIRCA 1810

Mahogany

98 1/2" H x 20" W x 10 1/2" D

Tall case clock, broken pediment to top, fire gilded bronze figures to top, 8 day works with complicated dial, painted moon dial with Arabic numerals, second hand to face and date, fully carved quarter columns, raised feet. Marked "David Weatherly, Philadelphia"

2000–4000



THE HELLYER COLLECTION

FURNITURE



131
French Gilt Gesso Mirror
FRENCH, 19TH C.
 Gesso over wood
 23" round
 Floral and fruit wreath border
300–600



132
French Gilt Gesso Mirror
FRENCH, 19TH C.
 Gesso over wood
 43" round
 Floral wreath border and beveled glass
200–400



133
Federal Style Mirror
 57" H x 27" W
 Tassel decoration to top, black and gold painted
300–600

FURNITURE



134
Federal Convex Mirror
AMERICAN, 19TH C.
Wood and gesso
Eagle on carved rock with wings spread and head turned and carved and scrolled foliage
300–600



135
Federal Style Gilt Mirror
AMERICAN, 20TH C.
Gilt wood and gesso
Crest depicting an eagle with a quiver of arrows
200–400



136
Mahogany Chippendale Chest of Drawers
AMERICAN, CHIPPENDALE, CIRCA 1770 – 1780
Mahogany
35" H x 41" W x 22" D
Four graduated dovetailed beaded drawers, carved quarter columns to sides, bale handles, original hardware, set on ogee bracket feet. Purchased at Blum's Antiques. Originally owned Joshua and Lydia Stokes, Medford, New Jersey
800–1200



137
Mahogany Wash Stand with Stenciled Fruit Design
AMERICAN, EMPIRE, NEW YORK, 1830
Mahogany
38 1/2" H x 35 3/4" W x 22" D
Painted, double doors with a single drawer to bottom, black and gold painted ornate design, top lifts up to reveal mirror, set on castor feet
600–900

138
Mahogany Tea Table
AMERICAN, 20TH C.
Santo Domingo Mahogany
28" H x 33" W x 20 1/2" D
Sculptured apron supporting a tray top with a step-molded edge, set on cabriole legs with acanthus leaf carving and enhanced ball and claw feet. Custom made by K. Alan Styte
600–900



140
Federal Mahogany Bow Front Chest of Drawers
AMERICAN, CIRCA 1810
Mahogany
37" H x 41 1/2" W x 23" D
Line inlaid detail to front of drawers, original hardware, shaped apron, set on bracket feet
600–900

139
Pair of Pier Tables with Marble Top
AMERICAN, EMPIRE CIRCA 1825 – 1835
Mahogany veneered, Vermont sugar maple
36" H x 45" W x 20 1/2" D
Single dovetailed drawer to front, columns with carved capitals, deep shelf to bottom, set on gadrooned paw feet. Marked with label inside to drawer, Anthony Quervelle (1789-1856)
1500–2500



FURNITURE



141

Dutch Marquetry Upholstered Arm-Chair

DUTCH, CIRCA 1870

Walnut, inlaid

36" H x 25 1/2" W x 20" D

Inlaid with a medallion and urn decoration to back splat, rope and tassel ornate design, scrolled arms

300-500

143

George IV Mahogany Pair of Side Chairs

ENGLISH, GEORGE IV, 1830 - 1839

Mahogany

34" H x 19 1/4" W x 15" D

Curved and carved back splat, turned octagonal legs set on raised feet

400-600



142

Pair of Regency Style Upholstered Arm-Chairs

AMERICAN, 19TH C.

Cherry

32 1/2" H x 22" W x 22" D

Cross stretcher to back and curved carved arm and legs set on claw feet

400-600



144

Sheraton Mahogany Carved Card Table

**AMERICAN, SHERATON, SALEM, MA
CIRCA 1810 - 1815**

Mahogany

29" H x 37" W x 17" D

Serpentine apron to front, carved capitals, with ring turned fluted legs set on raised feet

400-600



145

Chippendale Style Side Chairs

AMERICAN, 20TH C.

Walnut

41 1/2" H x 23" W x 20" D

(4) Vase shaped open splat with shell carving to top and curved ears, acanthus leaf carved knees, set on ball and claw feet. Custom made by K. Alan Styer

600-900



146

Empire Mahogany Dining Table Set On Lions' Paw Feet

AMERICAN, EMPIRE, 19TH C.

Mahogany

29" H. x 60" Round

Empire dining table with octagonal pedestal set on lions' paw feet.

(5) extension leaves

1000-1500

FURNITURE

147

Chippendale Walnut Side Chair

AMERICAN, 19TH C.

Walnut

38 1/2" H x 22" W x 18" D

Walnut side chair with open slat, shell carving to back and apron, curved ears, carved shell motif on knees set on ball and claw feet

200–400



149

Anthony Quervelle Game Table

AMERICAN, CIRCA 1825

Rosewood

29" H x 39" W x 19 1/2" D

Game table with a pedestal bottom, lion paw feet on castors, leaf carving to top and gadrooned edge

1000–1500



148

French Music Cabinet with Marble Insert

FRENCH, 19TH C.

Walnut and burled walnut

43" H x 31 1/2" W x 18" W

Applied carvings, front door with painted landscape and figures

1000–2000



150

Biedermeir Pair of Side Chairs

CONTINENTAL, CIRCA 1815 – 1848

Burled walnut veneer

33 1/2" H x 18" W x 16 1/2" D

Shaped open splat, caned seat, worm holes, set on H stretcher

400–600



151

American Federal Flame Mahogany Secretary Bookcase

AMERICAN, FEDERAL, CIRCA 1810 – 1819

Mahogany

75" H x 43" W x 20" D

Straight pediment top above glazed cabinet doors, four shelves to interior, slat front, three dovetailed graduated drawers, turned columns to sides, set on raised feet

1000–1500

152

Empire Pier Table

AMERICAN, EMPIRE, NEW YORK, CIRCA 1820

Mahogany and marble

39" H x 47" W x 21 3/4" D

Marble top, gold painted stenciled detail, columns with carved gilt iconic capitals, back inset with mirror, set on raised foliate carved turned feet

500–700



FURNITURE



153

Pair of Mahogany Side Chairs
ENGLISH, 19TH C.

Mahogany
35" H x 19" W x 17 1/2" D
Pair of mahogany side chairs, incised and carved back splat with shell carving to top, upholstered seats lift off to caned seats

200–400



154

Mahogany Sewing Table
AMERICAN, 19TH C.

Mahogany
29 1/2" H x 25" W x 17" D
Single dovetailed drawer to front with carved wood handles, bottom with H-shaped stretcher

200–400



155

American Empire Mahogany Game Table
AMERICAN, EMPIRE, CIRCA 1840

Mahogany
29" H x 36" W x 18" D
Gadrooned edge, carved acanthus leaf urn pedestal to bottom, set on claw feet with casters. Missing gadrooned trim to bottom

300–500

156

Victorian Mahogany Carved Bookcase with Sainted Etched-Glass Panels

AMERICAN, VICTORIAN, CIRCA 1870

Mahogany
67" H x 44" W x 15 1/2" D
Fretwork to doors, ornate metal hardware to corners, two dovetailed drawers to bottom. A piece of glass insert is broken. Lot does not include contents of bookcase

800–1200



157

Mahogany Desk with Lift Top
AMERICAN, 19TH C.

Mahogany
30" H x 36" W x 17 1/2" D
Gadrooned edge, carved ring turned legs

300–500

158

Anthony Quervelle Mahogany Bow Front Chest of Drawers
AMERICAN, EMPIRE, CIRCA 1830

Mahogany
46" H x 47" W x 23 1/2" D
Flanked columns with carved capitals, four beaded graduated drawers with original hardware, set on paw feet

1000–1500



FURNITURE



159
French Empire Mahogany Arm Chair
FRENCH, EMPIRE, CIRCA 1810 – 1819
Mahogany
44 1/2" H x 26" W x 23" D
Carved back splat to top chair rail, carved heads as arm supports, ring turned legs on caster feet
200–400

160
Pair of French Empire-Style Gold Painted X-Stools
FRENCH, CIRCA 1900
Wood
28" H x 31" W x 17" D
Carved dog shaped heads
400–600



161
Renaissance Revival Walnut and Burled Walnut Victorian Music Cabinet
AMERICAN, RENAISSANCE REVIVAL, CIRCA 1870
Walnut, burled walnut
42" H x 32" W x 21" D
With Victrola, applied carving and columns, veined marble to top
800–1200



162
Sheraton Mahogany Burled Walnut Veneered Bow Front Chest of Drawers
AMERICAN, SHERATON, CIRCA 1830
Mahogany and burled walnut veneer
37 1/2" H x 42 1/2" W x 20" D
Two short drawers to top over three graduated beaded dovetailed drawers with brass pulls, replaced hardware, applied roped pilasters and turned feet
800–1200



163
Mahogany and Marble Washstand
AMERICAN, 19TH C.
Mahogany and marble
37" H x 38 1/2" W x 22" D
Two dovetailed drawers to front, set on ring turned legs. Marble top appears to be later
400–600



FURNITURE



164
Victorian Table with Shaped Marble Top
VICTORIAN, CIRCA 1870
 Oak
 30" H x 33 1/2" W x 24" D
 Carved apron with rosettes, bottom with X-shaped urn stretcher beneath shaped marble top
200-400

165
American Empire Console Table
Veneered Console Table
AMERICAN, EMPIRE, CIRCA 1835 - 1840
 Mahogany Veneer and marble
 37" H x 44 1/2" W x 21 1/2" D
 Marble top, curved S-shaped supports, mirror to bottom, set on scroll feet
400-800



166
Dressing Table with Cheval Mirror
AMERICAN, 19TH C.
 Cherry
 59" H x 42" W x 22" D
 Two-piece dressing table with cheval mirror, carved S scroll supports and two pull out drawers, seated on a table with three drawers set on cabriole legs and pad feet
200-400

167
American Empire Side Table
AMERICAN, EMPIRE, CIRCA 1825
 Mahogany
 28 1/2" H x 20 1/2" W x 15 1/2" D
 Two drawers to front with brass pull outs, leaf pattern pedestal, carved lion's paw feet
200-400



THE HELLYER COLLECTION

FINE ART



168

Georges Gardet

FRENCH, 1863 – 1939

Bronze

Signed to base

14" H x 19" W x 9" D

Sculpture of male lion seated above a female reclining lion. Purchased from John Pence Gallery, San Francisco, CA.

1500–2500



170

Emile Andre Boisseau

FRENCH, 1842 – 1923

Bronze

"La Defense du Foyer", 19th c.

Signed on base; Identification plaque reads, "La Defense Du Foyer, Salon Des Beaux Arts"

28 1/2" H x 19" W x 12" D

Savage standing holding knife with woman and child

1000–1500



169

David Eugene Henry

AMERICAN, B. 1946

Bronze

"The Warrior"

Signed on base

27" H x 14" W x 7" D

Man standing with shield in his left hand

1000–1500

FINE ART



171
Bruno Zach
AUSTRIAN, 1891 – 1945
Bronze
Statue of Female Spartan
Signed Zach 1640
33" H x 8 1/2" W x 8" D
Statue of a female nude with a helmet
800–1200



173
Louis-Albert Lefeuve
FRENCH, 1845 – 1924
Bronze
"Les Fondeurs du Moyen Age", circa 1900
Signed on the bell
18" H x 19 1/2" W x 13" D
Gilded bronze bell being carried upside down
by two nude male figures
Purchased in Chestnut Hill, PA
4000–6000

172
French Sculpture
Bronze
16 1/2" H x 10" W
x 7" D
Hollow bust of a
helmeted Spartan
300–500



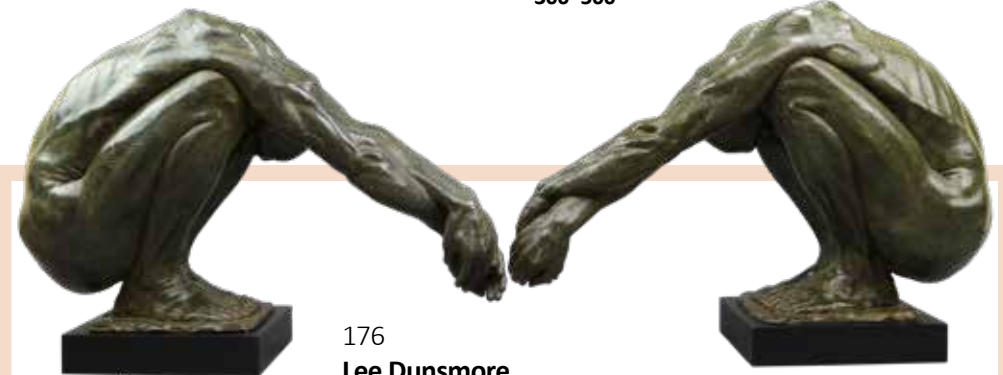
174
Emile-Louis Picault
FRENCH, 1833 – 1915
White metal
"Honor, Patria"
Signed on base
23" H
Male helmeted Spartan
figure standing and
holding a sword
100–200



175
**Prof. Tuch
(Bruno Zach)**
AUSTRIAN, 1891 – 1945
Bronze
"Germany" on base
26" H x 21 1/2" W x
5 1/2" D (with base)
Standing helmeted
Spartan male
600–800



177
After Guillaume Coustou
FRENCH, 1677 – 1746
Bronze
19th c.
22" H x 18 W' x 10" D
Single Marly horse rearing on hind legs
with his nude groom holding onto the reigns
with right hand
300–500



176
Lee Dunsmore
AMERICAN, 20/21ST CENTURY
Densite
"Equilibrium"
Signature on base
14 1/2" H x 23" W x 8 1/2" D
Pair of nude figures squatting with their hands
outstretched on black wooden base
2000–4000

FINE ART



178

Lee Dunsmore
AMERICAN, 20/21ST C.

Densite

Unsigned

14" H x 34" W x 9 1/2" D

Nude man laying down with left arm on rock and right outstretched resting on right knee

300-500



180

Gary Weisman
AMERICAN, B. 1952

Bronze

Signed

18" H x 6" W, Base 5" x 5"

Anatomy of male figure standing with right leg raised

1000-1500

181

Lee Dunsmore
AMERICAN, 20/21ST C.

Densite

Unsigned

50" H x 12 1/2" W x 10 1/2" D

Draped nude male figure stands embracing a standing female figure

300-500



183

Chris Thomas
AMERICAN, B. 1970

Oil on panel

"Serenade", 2008

Signed and dated lower right

7 1/2" H x 12 1/2" W

Seated doll in chair with clown-like figures on either side.

Purchased from John Pence Gallery, San Francisco, CA

400-600

182

Evgeniy Viktorovich Vuchetich
RUSSIAN, 1908 - 1974

Bronze

"Let us beat swords into ploughshares"

9 3/4" H x 7 1/2" W x 3 1/2" D

A man holding a hammer aloft in one hand which he using to beat a sword into a plough, The image is one of the best known sculptures of the Soviet period and been used as a symbol for peace ever since

300-600



184

Albert Jean Adolphe
AMERICAN, 1865 - 1940

Oil on canvas

Nude model, 1899

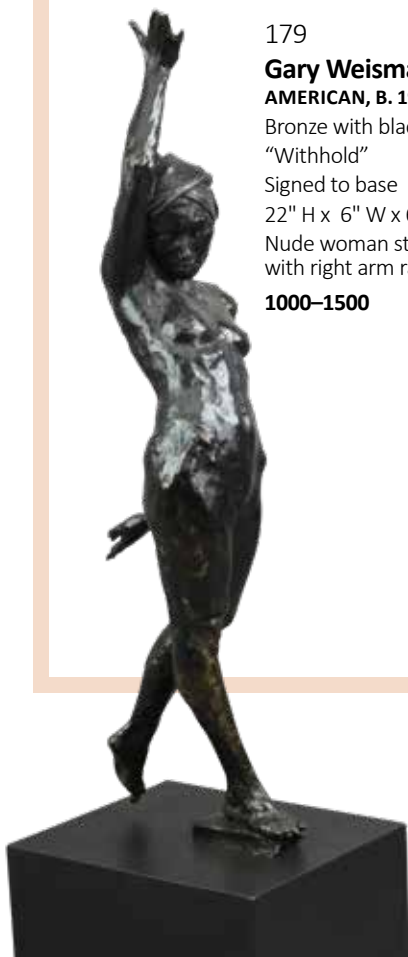
Signed, dated and located upper right, artist stamp to back of canvas

17 1/2" H x 11 1/2" W

Bust painting of a nude woman who looks over her right shoulder

Purchased at Freeman's on 6/27/2004

600-900



179

Gary Weisman
AMERICAN, B. 1952
Bronze with black patina
"Withhold"

Signed to base

22" H x 6" W x 6 1/2" D

Nude woman standing with right arm raised

1000-1500

FINE ART



185

Susan Hannah MacDowell Eakins

AMERICAN, 1851 – 1938

Oil on canvas

Portrait of a Man

Tags on back from exhibit at Pennsylvania Academy of Fine Arts and Hirschi & Adler

9 1/2" H x 7 3/4" W

Portrait of a man with goatee wearing a coat and tie

Purchased at Hirschi & Adler Galleries

1500–2500



186

Bo (James William) Bartlett III

AMERICAN, B. 1955

Oil on board

Artist mark upper right corner

11 1/2" H x 8 1/2" W

Portrait of a seated woman with head resting on right hand

Purchased from Sande Webster Gallery

1000–2000



188

Adam Forfang

AMERICAN, B. 1978

Oil on board

"In the Middle", 2002

Signed upper right

22 1/2" H x 19 1/2" W

Image of mask between two red tassels

Purchased from John Pence Gallery, San Francisco, CA

300–600



190

Douglas Ferrin

AMERICAN, B. 1959

Oil on canvas

Unsigned

19 1/4" H x 15 1/4" W

Still-life of pumpkin with two dolls and small vase with white flowers against blue and white striped background

400–800



187

Jacob A. Pfeiffer

AMERICAN, B. 1974

Oil on panel

"Family Heirlooms", 2003

Signed lower left and dated lower right

8" H x 10" W

Still life of two red tomatoes on either side of a green tomato with stem

Purchased from John Pence Gallery, San Francisco, CA

400–800



189

Steven Skollar

AMERICAN, B. 1958

Oil on board

"Small Good Humor", 2010

Signed upper left, on back card from Arcadia Fine Arts, New

York and handwritten "We All Scream ... , Steven Skollar, 2011, Brooklyn NYC"

7 1/2" H x 11 1/2" W

White Good Humor ice cream truck

800–1200



191

Randall Sexton

AMERICAN, B. 1958

Oil on canvas

"Horse Crossing", 1997

Signed and dated lower right

24 1/2" H x 18 1/2" W

Clown in red outfit with horse painting

Purchased from John Pence Gallery, San Francisco, CA

400–800

FINE ART



192
Douglas Ferrin
AMERICAN, B. 1959
 Oil on canvas
 2000
 Signed and dated lower right corner
 25 3/4" H x 21 1/2" W
 Still-life with black and white checkerboard
 in background
 Purchased in October 2007
400-800



193
Randell Sexton
AMERICAN, B. 1958
 Oil on canvas
 "Street Minstrels", 2003
 Signed lower left corner
 29 1/2" H x 23 1/2" W
 Street scene with clowns, some on stilts,
 with people watching on sides
400-800



194
Giovanni Battista Piranesi
ITALIAN, 1720 - 1778
 Etching
 19th c.
 Signed lower right Gio. Batta. Piranesi
 16" H x 25" W
 Image of the intersection of Via Appia and
 Via Ardentina
800-1200



195
Giovanni Battista Piranesi
ITALIAN, 1720 - 1778
 Etching
 19th c.
 Signed lower right Gio. Batta. Piranesi
 19" H x 27" W
 Image of the Parthenon
800-1200



196
Martha Mayer Erlebacher
AMERICAN, 1937 - 2013
 Oil on canvas
 1991
 Initialed and dated lower right
 13 3/4" H x 13 3/4" W
 Nude woman sitting on box in a room in
 front of a window
1500-2500



197
Douglas Ferrin
AMERICAN, B. 1959
 Oil on canvas
 1985
 Signed and dated
 23 1/2" H x 19" W
 Still-life with wooden dolls, ceramic pitcher
 and ceramic head
400-800



198
Martha Mayer Erlebacher
AMERICAN, 1937 - 2013
 Oil on canvas
 1995
 Initialed and dated
 bottom center
 72" H x 82" W
 Male figure
 standing with five
 semi-nude figures
 lying on rocks
4000-6000

FINE ART



199

Douglas Ferrin
AMERICAN, B. 1959

Oil on canvas

2011

Signed and dated center right

15 1/2" H x 13 1/2" W

Still life with two dolls in front of a pumpkin

400-800



200

Douglas Ferrin
AMERICAN, B. 1959

Oil on canvas

"Oranges at Night", 1993

Signed and dated on right

20 3/4" H x 24 3/4" W

Still-life with oranges on table

400-800



202

Jacob A. Pfeiffer
AMERICAN, B. 1974

Oil on board

"Mask Appeal", 2004

Signed lower left, dated

13 1/2" H x 10 1/4" W

Image of an Asian mask with a chipped background.

Purchased from John Pence Gallery, San Francisco, CA

400-800



204

Jacob A. Pfeiffer
AMERICAN, B. 1974

Oil on board

"Dilemma", 2002

Signed lower left, dated lower right

8 3/4" H x 11" W

Still life of an apple and a cupcake

400-800



203

Jacob A Pfeiffer
AMERICAN, B. 1974

Oil on board

"Appealing", 2002

Signed lower right

8 1/2 H x 11 1/2" W

Still-life with an orange and peel

400-800



205

Douglas Ferrin
AMERICAN, B. 1959

Oil on board

2014

Signed and dated lower right corner

15 1/4" H x 13 1/2" W

Still life of flowers in vase, pencil, wooden dolls and persimmon

400-800



201

Philip Steegman
BRITISH, 1903 - 1952

Oil on board

"Abyssinian Head", 1926

Unsigned

Whistler gilded frame

11" H x 9 1/4" W

Image of an African American woman, artist painted in Rome

2000-4000

FINE ART



206

Douglas Ferrin

AMERICAN, B. 1959

Oil on board

2013

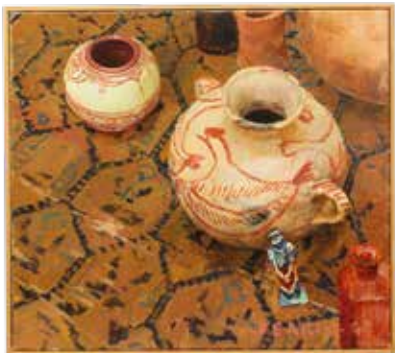
Signed lower right

Blue and gold painted wood frame by artist

11 1/2" H x 16" W

Still life with three persimmons

400-800



207

Douglas Ferrin

AMERICAN, B. 1959

Oil on linen

"Still Life with Pots", 1993

Signed and dated lower right

18 1/2" H x 20 1/2" W

Still life of two painted clay pots

400-800

208

Douglas Ferrin

AMERICAN, B. 1959

Oil on canvas

2012

Signed and dated lower right

21 1/2" H x 27 1/2" W

Still life with wooden boat, globe and mango and a rug

400-800



209

Jeffrey R. Pugh

AMERICAN, 20/21ST C.

Oil on board

Signed lower right

11 1/4" H x 15 1/4" W

Cow grazing in a field with trees and mountain in background

300-500



210

Jacob A. Pfeiffer

AMERICAN, B. 1974

Oil on panel

Study for: "Next Window Please" 2002

Signed lower left

12" H x 9" W

Image of a man's face behind a window with circular opening

400-800



212

Robert Liberace

AMERICAN, B. 1967

Oil on board

"Telemon", 2012

Signed lower right

24" H x 12" W

Study of a male nude standing with arms raised

1500-2500

211

Robert Liberace

AMERICAN, B. 1967

Oil on board

"Maenad Resting", 2010

Signed lower right

12 3/4" H x 17 3/4" W

Female nude with drapery reclining

1500-2500



FINE ART



213

**Bo (James William)
Bartlett III**

AMERICAN, B. 1955

Oil on panel

"Two women without men"

Signed lower left corner, IGN,
pentagon shape lower right

11 1/4" H x 15 1/2" W

Two nude figures seated
in landscape

2000-3000



215

Robert M. Kulicke

AMERICAN, 1924 - 2007, BACKGROUND, 1990

Oil on canvas mounted on masonite

"A Yellow and a Green Pear with an Almond
on a Light Grey Background"

Signed lower bottom and dated

7 1/2" H x 9 1/2" W

Still life of two pears with almond

1000-2000



216

Robin Hotchkiss

D. 2015

Oil on wood

"One Eyed Jack"

Unsigned

5 1/2" H x 4 3/8" W

Portrait of white pit bull with black eye
wearing a gold collar

300-500



214

**Bo (James William)
Bartlett III**

AMERICAN, B. 1955

Oil on board

"Signal Study 92-93"

Signed IGN lower left, triangle
shape lower right

13 3/4" H x 10 7/8" W

Male figure with open arms

2000-3000



217

American Oil on Canvas

"Nude with Orange Hat", 2005

Unsigned

23" H x 19 1/4" W

Nude woman standing with arms
behind her back and wearing an
orange cap

3000-5000

FINE ART



218

Michael Bergt

AMERICAN, B. 1958

Lithograph

"Life Boat", 1997

Titled, signed, dated and numbered g/40 on bottom

19 1/4" H x 19 1/4" W

Male seated in lifeboat held by two white rings with open box in front and closed behind against a red, yellow and blue background

200-400

219

Harvey Dinnerstein

AMERICAN, B. 1928

Oil on canvas

"Reflectors", 1968

Signed and dated upper right

Gold painted box wood frame

37 1/2" H x 25 1/2" W

Woman in a fur cape wearing sun glasses

1500-2500



220

Douglas Ferrin

AMERICAN, B. 1959

Oil on linen

"Self Portrait", 1988

Unsigned

22" H x 18" W

Douglas Ferrin's self portrait

400-800



221

Martha Mayer Erlebacher

AMERICAN 1937 - 2013

Oil on canvas

"The Back", 1996

Unsigned

Narrow box frame

49 1/2" H x 44" W

Naked woman showing her back, her hair in a braid

Purchased at The More Gallery, Inc.

2000-4000

222

Wade Shuman

AMERICAN, B. 1962

Oil on linen

May 1, 1989

Dated and signed on back

Frame made by artist

21" H x 25 1/2" W

Man's torso with water, trees, and a cup

2000-3000



FINE ART



223

Bo Bartlett

AMERICAN, B. 1955

Charcoal and pencil

"Last Waltz of a Maniac"

Signed and titled bottom

18" H x 10" W

Naked man standing sideways wearing a half t-shirt

600-900



224

David Fertig

AMERICAN, B. 1946

Oil on canvas

1983

Signed and dated lower center

17" H x 12" W

Still life of flowers in a glass vase

800-1200



225

Chris Thomas

AMERICAN, B. 1970

Oil on board

"Safe and Sound", 2012

Signed lower right corner

8" H x 10" W

Still life with coins and clown face

Purchased from John Pence Gallery, San Francisco, CA

400-600



226

Wes Hempel

AMERICAN, B. 1953

Oil on canvas

"Suspension of Disbelief", 2003

Signed and dated lower left

34" H x 34 1/2" W

Man wearing crown of leaves balancing himself with hands on hips on a rope over water

Purchased in San Francisco, CA

800-1200

227

Robert M. Kulicke

AMERICAN, 1924 - 2007

Oil on panel

"Single Yellow Pear on a Red Background", 1992

Signed and dated lower bottom

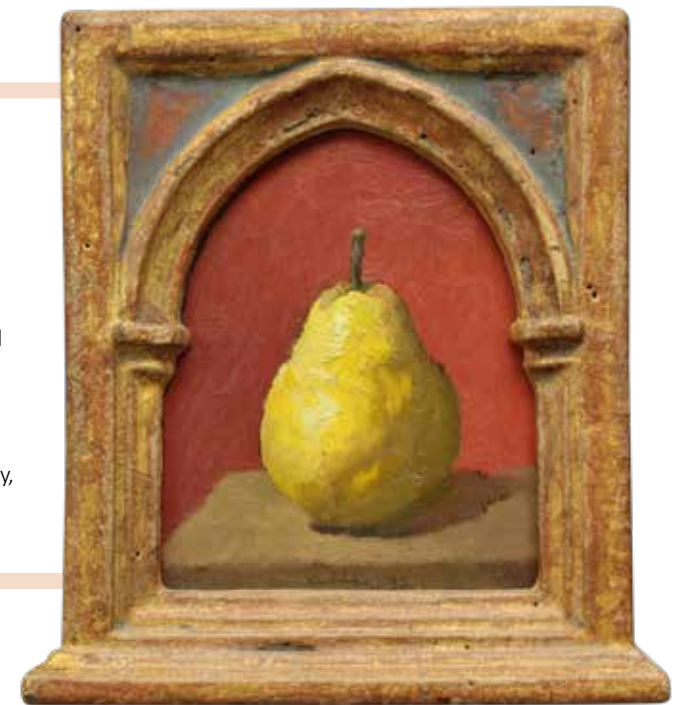
Gilded and hand-finished molded Gothic frame made by artist

7 3/16" H x 5 3/4" W

Still life of a pear with red background

Purchased at Marian Locks Gallery, Philadelphia, PA

2000-3000



228

Robert M. Kulicke

AMERICAN, 1924 - 2007

Oil on wood panel

"Jar of Green Olives on a Dark Grey Background", 2001

Signed and dated bottom center

Framed by artist

7 11/16" H x 6 7/16" W

Still life of green olives in open jar

Purchased from Davis & Langdale Company, Inc, New York

2000-3000



FINE ART



229

Paul Cadmus

AMERICAN, 1904 – 1999

Etching

"Nudo" Series #1, #2 and #3 1984

Signed in plate, hand signed and each numbered 20/100

9" H x 8" W each

Three first state etchings of seated nude males

Purchased at John Pence Gallery, San Francisco, CA

2000–3000



230

Paul Cadmus

AMERICAN, 1904 – 1999

Silverpoint and acrylic white gesso on board

"Reclining Nude NM 2291", 1992

Signed upper left

12 1/2" H x 10 1/2" W

Drawing of a nude male lying down with feet toward viewer

Purchased at DC Moore Gallery, New York

2000–3000



231

Paul Cadmus

AMERICAN, 1904 – 1999

Lithograph pencils on Arches paper

"Nude on Ledges NM 277 (Study for Heliogravure)", 1996

Signed lower right corner

9" H x 9" W

Nude male lying down with head to viewer

2000–3000

FINE ART



232

Jacob A. Pfeiffer

AMERICAN, B. 1974

Oil on board

Signed lower left

7 1/2" H x 9 1/2" W

Chess board with four chess pieces

400-800



234

Bo Bartlett

AMERICAN, B. 1955

Oil on board

"Johanika", 1987

Initialed IGN top right corner

14 1/4" H x 12 1/2" W

Female nude with head resting on pink cushion

2000-4000



236

Jacob A. Pfeiffer

AMERICAN, B. 1974

Oil on panel

"Under Lock and Key", 2002

Signed lower right

8" H x 10" W

Still life of key and lock hanging on nails

Purchased at John Pence Gallery,
San Francisco, CA

400-800



238

Ronald Bateman

AMERICAN, B. 1947

Oil on board

Unsigned

Frame by artist

15" H x 13" W

Still life of banana and glove on floral tapestry

400-500



233

John Patrick Campbell

AMERICAN, B. 1975

Oil on linen

"Little Mary", 2001

Signed and dated lower right corner

15" H x 16" W

Doll with red dress and a cardigan

Purchased from John Pence Gallery, San
Francisco, CA

300-500



235

Wade Shuman

AMERICAN, B. 1962

Oil on board

7 1/2" H x 9 1/2" W

Female figure with a lizard head and a tail

1000-2000



237

Ronald Bateman

AMERICAN, B. 1947

Oil on canvas

"Aviatrix", 1982

Initialed lower right corner

Frame by artist

14 1/4" H x 18" W

Diptych of woman wearing aviator hat
and jacket and still life of glove and pencil
on tapestry

400-800



239

Nelson Shanks

AMERICAN, 1937 - 2015

Oil on board

"Portrait of a Young Woman"

Signed lower left

12" H x 10" W

Profile of a young woman's head

2000-4000

FINE ART



240

Steven Skollar
AMERICAN, B. 1958

Oil on panel
"Top Vase Truck", 1996
Signed lower left, titled and dated on back
Frame made by artist
10" H x 8" W
Still life of top, vase and truck.

800-1200



241

Fred Danziger
AMERICAN, B. 1946

Acrylic on canvas
"Elephanti", 1986
Signed and dated lower right corner
11" H x 9" W
Elephant riding a bicycle on a rope
Purchased at La Delle Gallery

400-800



243

Bo Bartlett
AMERICAN, B. 1955

Oil on board
1990
Signed and dated on back
Overall: 12" H x 15 1/2" W
White house with trees

2000-3000



242

Thomas Chimes
AMERICAN, 1921 - 2009

Oil on canvas
"All this happened to me
because of music"
Lower right corner
12" H x 14" W
Dome with steeple, Memorial Hall
in Philadelphia
Purchased at Marion Locks Gallery,
Philadelphia, PA

1000-2000



244

Robert M. Kulicke
AMERICAN, 1924 - 2007

Oil on board
2004
Signed and dated top center
Frame made by artist
5 1/6" H x 7 1/8" W
Still life with purple and red
flowers in a white vase
Purchased at Davis &
Langdale Company, Inc.,
New York

2000-3000

FINE ART

245

Robert M. Kulicke
AMERICAN, 1924 – 2007

Oil on wood panel
Unsigned Frame made
by artist 6 1/2" H x 9 3/4" W
Still life of four apples

2000–3000



246

Giovanni Battista Piranesi
ITALIAN, 1720 – 1778

Etching
19th c.

Signed, titled and inscribed
25" H x 31 1/2" W

Piranesi Architectural print

View of the Capitoline Hill shows the steps to the Church of S. Maria in Aracoeli at left. A legend at bottom identifies eight significant architectural features, including the Palazzo Senatorio, Palazzo dei Conservatori, and the equestrian statue of Marcus Aurelius

800–1200



247

Robert M. Kulicke
AMERICAN, 1924 – 2007

Oil on board
1964

Unsigned, inscribed
on back to Sophie
Risenberg

8 1/2" H x 10 1/2" W

Still life of two pears and two apples.
Purchased at Sande Webster Gallery

2000–3000



248

Adam Forfang
B. 1978

Charcoal on paper
"Jesse", 2001

Signed and dated lower right

29" H x 21 1/2" W

Male nude

Purchased at John Pence Gallery,
San Francisco, CA

200–400



FINE ART



249
Michael Bergt
AMERICAN, B. 1958
 Colored pencil on colored paper
 "Adrian, Palms Up", 1999
 Signed Lower right corner
 13" H x 18" W
 Male nude sitting with head on his knees
 Purchased at John Pence Gallery,
 San Francisco, CA
200-400



250
Rosenthal Porcelain Plaque
 Painted porcelain
 19th c.
 9" H x 7 1/4" W
 King Frederick II of Prussia
300-500



251
Robert Adam
1728 - 1792
 Engraving
 "Elevation of the Gateway to Sion House"
 17" H x 24" W
 Architectural layout
400-600



252
Joseph Pennell
1857 - 1926
 Etching
 "The Water Works", 1920
 Signed out of block, lower center
 18" H x 23" W
 Old Fairmount water works and basin in
 Philadelphia, PA
400-800



253
Wade Shuman
AMERICAN, B. 1962
 Oil on board/panel
 Unsigned
 Sizes vary 3" - 6"
 Two circular images of faces, one diamond image
 of a nose and a diamond shaped image of an eye
1000-2000



254
Giovanni Battista Piranesi
ITALIAN, 1720 - 1778
 Etching
 19th c.
 Signed, titled and inscribed
 24" H x 32" W
 Piranesi Architectural print
 Veduta Piazza Despania
800-1200



255
Giovanni Battista Piranesi
ITALIAN, 1720 - 1778
 Etching
 19th c.
 Signed, titled and inscribed
 26" H x 34" W
 Piranesi Architectural print
 Multiple buildings
800-1200

FINE ART



256
Joseph Pennell
 1857 – 1926
 Etching
 Early 20th c.
 Signed in block lower left
 22 1/4" H x 17" W
 Girard Trust Company
200–400



257
Oil on Canvas
 Signed lower left
 21 1/2" H x 27 1/2" W
 Classical Roman scene
800–1200



258
George Tooker
 1920 – 2011
 Lithograph
 "Un Ballo in Maschera"
 Signed and numbered lower left
 22" H x 29 1/2" W
600–900



259
Jacob Frey
 1681 – 1752
 Etching
 1720's
 24 3/4" H x 13 1/4" W
 The Vision of St Romuald the Camadolese monk, dressed in white seated under a tree to right, preaching to his brothers; monks ascending to heaven in the background to left; after the painting by Sacchi in the Vatican
300–500



260
Mixed Media
 Signed dated lower right
 16 1/2" H x 13" W
 Female nude
200–400



261
Joseph Pennell
 1857 – 1926
 Signed lower left
 18" H x 23" W
 View of bridge arches and waterway
400–800



262
Jon deMartin
 20TH C.
 Sepia and white chalk on toned paper
 Academy study of a seated male nude
 Signed lower right
 23 1/4" H x 17 1/4" W
200–400



263
John Havens Thornton
 B. 1933
 Oil on canvas
 Signed upper right, 1991
 30" H x 22" W
 Pee Wee Herman doll still life with toys
400–800

FINE ART

264

Wade Schuman

B. 1962

Oil on linen on board

"Bird heads in niche", 1993

Artists insignia and date en verso

13" H x 15 3/4" W

Retains Pennsylvania Academy
of the Fine Arts exhibition tag

2000-4000



266

Oil on Canvas

Unsigned

11.5" H x 13 1/2" W

Riverscape

200-400



268

Onelio Marrero

B. 1958

Pastel on paper

2007

Signed and dated lower right

12 1/2" H x 9 1/3" W

Nude portrait of a rear facing male,
partial sketch en verso

100-200



265

After Guido Reni

ITALIAN, 1575 - 1642

Oil on canvas

19th c.

"The Chariot of Aurora"

35 1/2" H x 77" W

Apollo in his chariot preceded by dawn

1000-2000

267

Daniel Adel

B. 1962

Oil on canvas

"Sirocco", 2002

20" H x 24" W

Crumpled paper with apparent dimension

3000-5000



FINE ART



269
Adam Vinson
 20/21ST C.
 Oil
 "Joker"
 Signed in center
 7" H x 5" W
 Joker playing card taped to a backdrop
400–600



270
Coastal Landscape
 Unsigned
 11 1/4" H x 10 1/2" W
 Landscape
200–400



271
Bo (James William) Bartlett III
 B. 1955
 Oil on canvas
 "Miss Alma Talbert", 1982
 11 1/2" H x 5 1/2" W
 Female nude
1000–2000



272
Bo (James William) Bartlett III
 B. 1955
 "Briganteen NJ", 1983
 Signed en verso
 6 1/2" H x 11" W
 Estuary landscape
1000–2000



273
Steve Wheldon
 ENGLISH, 20TH C.
 Oil on canvas
 Signed lower right
 6 3/4" H x 5 1/8" W
 Seated nude male
200–400



274
Jeffrey Reed
 20TH C.
 Oil on canvas
 "White Houses"
 Initialed lower left
 13" H x 12" W
 Landscape of a farmhouse
300–500



275
Still Life
 Signed and dated lower right
 9 1/4" H x 9 7/8" W
 Floral still life
200–400



276
Michael Bergt
 B. 1956
 Egg tempera on panel
 "Offering", 2002
 signed en verso
 3 1/2" H x 5 1/4" W
 Close up of a hand
 Purchased at John Pence Gallery, San Francisco
200–400

FINE ART



277
Jesse Vandenburg
LATE 20TH C.
Oil on board
1987
Initialed lower right
5 1/2" H x 8" W
Still life of fruit
200-400



279
Seascape
Unsigned
2 3/8" H x 5 1/2" W
Seascape with ships in the distance
200-400



278
Anne Packard
B. 1933
Oil on board
Signed lower left
4 1/4" h x 9 1/4" w
Coastal scene
600-900



280
Anne Packard
B. 1933
Oil on board
Signed lower left
4 3/4" H x 6 3/4" W
Coastal scene
600-900



281
Jacob A. Pfeiffer
AMERICAN, B. 1974
Oil on board
Signed lower right
12" H x 12" W
Still life of asparagus and red licorice
400-800

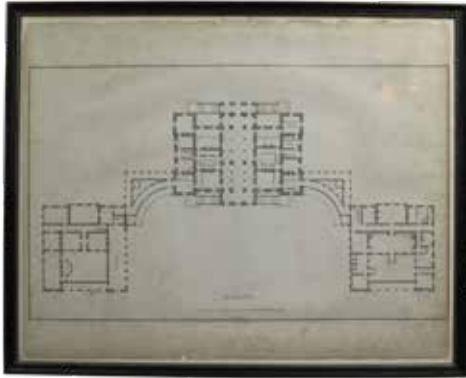


282
Chris Nissen
20TH CENTURY
Oil on birch ply
"Across the River at Sunset"
12" H x 14" W
Coastal sunset
200-400



283
Robert M. Kulicke
AMERICAN, 1924 - 2007
Oil on board
1994
Signed and dated
Ornate painted frame made
by artist
6 5/8" H x 6 5/8" W
Still life of a tomato
with a slice removed
2000-3000

FINE ART



284

T. Ripley Architect

Blue print

"Ground Plan"

20" H x 26" W

Country house in England. P. Fourdrinier sculptor.
I. Ware Delin. John Boydell excud 1784

200-400



286

Oil on Canvas

Unsigned

18" H x 13 3/4" W

Painted on both front and back, reclining nude on
the front and a nude female torso en verso

400-600



285

Chris Nissen

20TH C.

Oil on canvas

Signed on the bottom

29 3/4" H x 29 3/4" W

Outdoor scene of orange beach chair with trees
in the background

Purchased from Marion Locks Gallery

400-600



287

A. H. Mueller Map

Map of Springfield township, dated 1909

21 3/8" H x 31 5/8" W

200-400



289

Frame with Portrait

AMERICAN, 20TH C.

Wood

57" H x 45" W

Large carved wood frame, gilt gesso

300-500



288

Douglas Ferrin

AMERICAN, B. 1959

Oil on canvas

1981

Signed and dated lower right

27 3/4" H x 30 1/2" W

Still life of blue and white pitcher,
dolls, vase, and carpet

600-800



290

Joseph Pennell

1857 - 1926

Etching

1923

Signed and dated lower left

9 1/2" H x 12 1/2" W

New York skyline

400-800

FINE ART



291
Joseph Pennell
 1857 – 1926
 Etching
 Early 20th c.
 Signed out of block lower center
 9 1/2" H x 12 1/2" W
 View of the state house in Philadelphia, PA
400–800



293
David Fertig
 B. 1946
 Oil on canvas board
 Signed lower center
 14 1/3" H x 20 1/3" W
 Impressionist still life
2000–3000



294
Kevin Gorges
 AMERICAN, 20/21ST CENTURY
 Oil on canvas on panel
 "Two Bathers", 2002
 Signed lower left
 12" H x 10" W
 Two male figures in different perspectives
 Purchased from John Pence Gallery, San Francisco, CA
400–800



296
Clayton Anderson
 AMERICAN, BORN 1943
 Oil on board
 Signed en verso
 6 3/4" H x 8 3/4" W
 Surrealist landscape
200–400

292
Paul Cadmus
 1904 – 1999
 Egg tempera on casein toned paper
 "Male Nude TS 12", 1956
 Signed lower right
 17 3/4" H x 11 1/2" W
 Standing male nude
 DC Moore Exhibition label, 2002
5000–7000



295
Randall Exon
 20/21ST CENTURY
 Oil on canvas
 "VW"
 Unsigned
 9 1/2" H x 8 1/2" W
 Urban landscape with a VW bus
400–800



297
Kurt Moyer
 AMERICAN 20/21ST C.
 Oil on wood
 "Clouds over Fan Mountain", 2007
 Initialed lower right
 12" H x 10" W
 Distant cloud and mountains landscape
200–400

FINE ART

298

George Gonzalez
B. 1966

Oil on panel
"Egg Scale", 2002
Signed lower right
16" H x 12" W
Still life of an egg scale
in a shop window
Purchased from
John Pence Gallery,
San Francisco, CA

300-500



299

John Lear Jr
AMERICAN, 1910 – 2008

Watercolor
"Upper Pasture", 2003
Signed and dated lower right
10" H x 14" W
Horse and stable hand in the pasture
Purchased from the Chestnut Hill Gallery,
Philadelphia PA

300-500



300

Oil on Board

Signed and dated center right
10" H x 7 3/4" W
Impressionist female nude

100-300



301

Vivant Dominique Denon

1747 – 1825

Aquatint

"Influenza della luna sull' anima", 1837

17 1/2" H x 12" W

From the Italian publication Atlante
Monumentale dell Basso e Dell'Alto Egitto by
Girolamo Segato

200-400



302

Richard Biset

AMERICAN, B. 1948

Oil on canvas

Signed lower left

24" H x 16" W

Nude portrait of a standing male

200-400



303

Seymour Rotman

1929 – 2009

Oil on board

Initialed lower right

7 1/2" H x 9" W

Table top still life of various items

100-300

FINE ART



304
Ronald Bateman
20TH C.
Oil on board
Unsigned
11 1/2" H x 7 1/2" W
Nude portrait of a seated female
400-600



305
Stanley Bielen
B. 1957
Oil on paper mounted
"Marigolds with Blue Flowers", 2000
Signed lower right
7 1/2" H x 6 1/4" W
Impressionist floral still life
200-400



306
John Lear Jr
AMERICAN, 1910 – 2008
Watercolor
"Back to the wall of memories", 1999
Signed and dated lower right
14" H x 19" W
Interior of a shirtless male
Purchased from the Hahn Gallery, Philadelphia PA
400-800



307
Elizabeth Wilson
AMERICAN, 20TH C.
Oil on canvas
"Green Apples #1", 1984
Signed and dated lower right
10" H x 12" W
Still life of apples spread out on a table
100-300



308
Oil on Canvas
Initialed lower left
9 3/4" H x 11 1/2" W
Still life of lemons and cactus
Purchased at the Sande Webster Gallery in Philadelphia, PA
100-300



310
John Lear Jr
AMERICAN, 1910 – 2008
Pencil on paper
Signed and dated lower right, 1991
11" H x 8 1/3" W
Portrait of an acrobat
300-500

309
Anne Packard
B. 1933
Oil on board
Signed lower right
4 1/2" H x 6 1/2" W
Seascape of a solitary sailboat at sea
800-1200



FINE ART



311
Adam Forfang
B. 1978
 Oil on canvas
 "Refraction II", 2002
 Unsigned
 8" H x 8" W
 Table top still life of fruit and vase
 Purchased from John Pence Gallery,
 San Francisco, CA
200-400



312
Steve Wheldon
ENGLISH, 20TH C.
 Oil on canvas
 Signed lower right
 5 3/4" H x 7 1/3" W
 Nude portrait of a male
100-300



313
Susan Lichtman
AMERICAN, 21ST C.
 Oil on wood panel
 "Bunny in the Light", 2009
 Signed and dated en verso
 10" H x 8" W
 Interior of a porch with ladies and pets
100-300



314
Patricia Traub
20TH/21ST C.
 Oil on wood
 "Cougar", 2017
 Signed and dated en verso
 13 1/3" H x 15" W
 Portrait of a standing cougar
200-400



315
Steven Skollar
AMERICAN, B. 1960
 Oil on board
 "1949 Ford", 2001
 Signed lower right
 6 1/3" H x 12 1/3" W
 Still life of a pale blue
 1949 Ford
800-1200



316
Frank Depascale
AMERICAN, 20TH C.
 Oil on canvas
 "Green House"
 Signed lower right
 12" H x 16" W
 Urban landscape of a home
 Purchased from Gross, McCleaf Gallery
 Philadelphia, PA
300-500

FINE ART



317
Douglas Ferrin
B. 1959
 Oil on linen
 "House with Blue Canopy", 1987
 Signed and dated lower right
 13 1/2" H x 16 3/4" W
 Urban landscape of a home
300-500



318
Berla Emeree
AMERICAN, 1899 - 1948
 Signed lower left (W.H. Emery)
 9 1/2" H x 7 1/2" W
 Pastoral landscape
300-500



319
Thomas Buechner
AMERICAN, 1926 - 2011
 Oil on panel
 "Sonia Riegle Enthroned"
 Signed lower left
 20" H x 16" W
 Portrait of Sonia Riegle in feathers
300-500



320
Vincent Aderente
AMERICAN 1880 - 1941
 Oil on panel
 Signed lower center
 20" H x 16" W
 Portrait of a woman
800-1200



321
Douglas Ferrin
AMERICAN, BORN 1959
 Oil on board
 1985
 Signed and dated lower right
 13" H x 15" W
 Table top still life
400-800



322
Travis Schlaht
AMERICAN, B. 1975
 Oil on linen
 "Inspirations", 2002
 Signed upper right
 10" H x 16" W
 Still life of Polaroid photos of master painters
300-500



323
Oil on Board
 Unsigned
 15 3/4" H x 12" W
 Nude portrait of a male in a forest setting
100-200



324
Richard D. Berger
AMERICAN 21ST C.
 Oil on board
 2005
 Signed and dated lower right
 8" H x 12" W
 Distant landscape over water
200-400

Terms & Conditions of Sale

Alderfer Auction, 501 Fairgrounds Road, Hatfield, PA 19440. 215.393.3000

Buyers must register for a bidding number by giving name, address, phone number, and identification acceptable to us. Please show your bidding number to the auctioneer after each purchase you make.

The highest bidder shall be the buyer, and if any dispute arises between two or more bidders, the auctioneer shall decide the buyer or immediately put the item up for sale again. In the event of a tie between online bidder and the floor bidder, the floor bidder will take precedence. The auctioneer's decision will be binding and final.

Some lots are offered subject to a reserve, which is a confidential minimum price below which such a lot will not be sold.

The record of sale, kept by the auctioneer and clerk, will be taken as absolute and final in all disputes.

Catalog Auctions will include a Buyer's Premium of 20% with a 3% discount if paid with cash or acceptable check. Acceptable forms of payment for all in-house purchases are cash, bank check, AmEx, Visa, MasterCard, Discover and PayPal. For online bidders, the Buyer's Premium is 25%. Discounts do not apply to online purchases regardless of the form of payment.

Items purchased may be removed once payment is made. All items purchased by in-house bidders should be removed on the day of the auction. Online buyers who wish to pick up their purchases shall not do so until the Monday following the day of the auction.

Storage fees for any items left at the Auction Center for more than two weeks following the auction date will incur storage fees at a rate of \$10.00 per lot, per week regardless of the size or value of the lot. Storage fees will begin on the 15th day regardless of payment status.

Abandoned merchandise of unpaid items still remaining at our Auction Center 30 calendar days after the auction date will be considered abandoned and will be consigned to a future auction without additional notice to the purchaser.

Announcements made day of Auction take precedence over printed, electronic and verbal communication.

Absentee/Phone Bids

For those unable to attend the auction, Alderfer Auction offers the absentee and phone bid services as a convenience to our patrons.

- Everyone leaving an absentee/phone bid must be willing to leave their credit card number to assure payment of a successful bid(s) is received by the end of the next day following an auction.
- Minimum absentee bid is \$50.00. All bids will open at \$50.00.
- Phone bids will open at \$250 or half of published estimate.
- Illegible bid(s) will be disregarded.
- Applicable sales tax will be added to the sales total unless a tax-exempt number is on file in our office by the day of the auction.
- Applicable Buyer's Premium will be added to each purchase.
- All successful bid(s) requested to be shipped to the buyer will be sent by an in-house or third party shipper and billed by the shipper.
- Buyer is responsible to make shipping arrangements.

- Bids are executed in competition with the audience on an alternate basis. Due to uncertainties of bidding, a lot may sell to the

audience for the same amount authorized by the absentee bid. To avoid this possibility, the absentee bidder may authorize Alderfer Auction to increase their bid by one increment by placing a (+) sign beside the bid price.

- Merchandise is to be removed from the Auction Center within two weeks following the auction.
- **Storage fees:** Any items left at the auction center for more than two weeks following the auction date will incur storage fees at a rate of \$10.00 per lot, per week regardless of the size or value of the lot. Storage fees will begin on the 15th day regardless of payment status
- Alderfer Auction offers the absentee/phone bid service as a convenience to our patrons who are unable to attend the auction.
- Alderfer Auction will not be held responsible for error or failure to execute the bid.
- All items are sold as is without warranty or guarantee.

Glossary of Terms

If we say "circa" a certain date, then it was made within 25 years of that date.

Measurements are given within 1" of actual size.

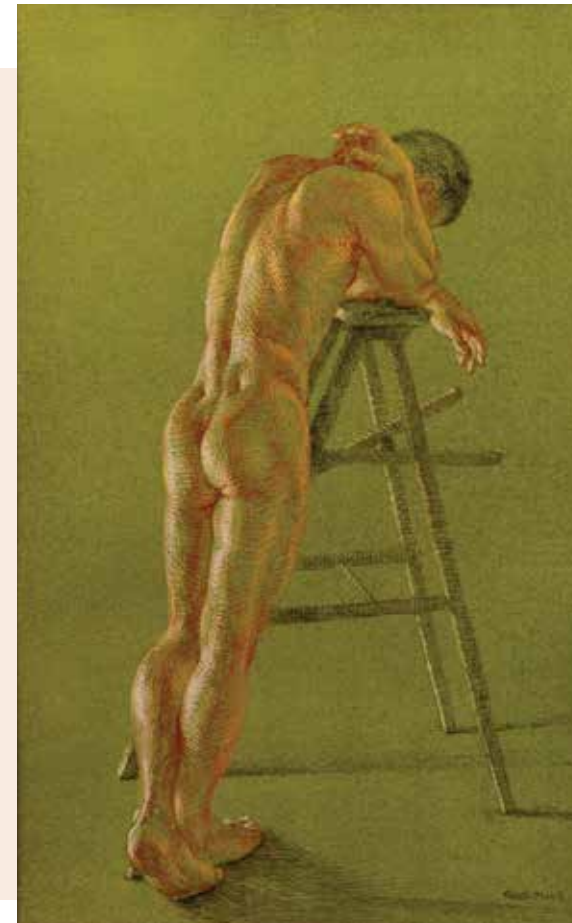
If we say "no defects observed", we mean that upon visual inspection we saw no defects.



179
Gary Weisman



283
Robert M. Kulicke



292
Paul Cadmus



48
E. Hebert, Figural
Ormolu Mantel Clock



298
George Gonzalez



148
**French Music Cabinet
with Marble Insert**



59
**French Bronze Animallier
Mantel Clock**



26
Egyptian Revival Ink Well