

163.090

SHARON'S CONVICTION

1. Robert E. Sharon, hereby certifies that this plat was prepared under the supervision of the Surveyor General of North Carolina, and that the same is a true and correct copy of the original as filed in the office of the Surveyor General of North Carolina, and that the same is a true and correct copy of the original as filed in the office of the Surveyor General of North Carolina, and that the same is a true and correct copy of the original as filed in the office of the Surveyor General of North Carolina.

Surveyor General
Robert E. Sharon
L-2797

City of Greensboro

City of Greensboro, North Carolina, hereby certifies that this plat was prepared under the supervision of the Surveyor General of North Carolina, and that the same is a true and correct copy of the original as filed in the office of the Surveyor General of North Carolina, and that the same is a true and correct copy of the original as filed in the office of the Surveyor General of North Carolina.

Surveyor General
Robert E. Sharon
L-2797

Greene County

Greene County, North Carolina, hereby certifies that this plat was prepared under the supervision of the Surveyor General of North Carolina, and that the same is a true and correct copy of the original as filed in the office of the Surveyor General of North Carolina, and that the same is a true and correct copy of the original as filed in the office of the Surveyor General of North Carolina.

Surveyor General
Robert E. Sharon
L-2797

WICINITY MAP

CURVE TABLE

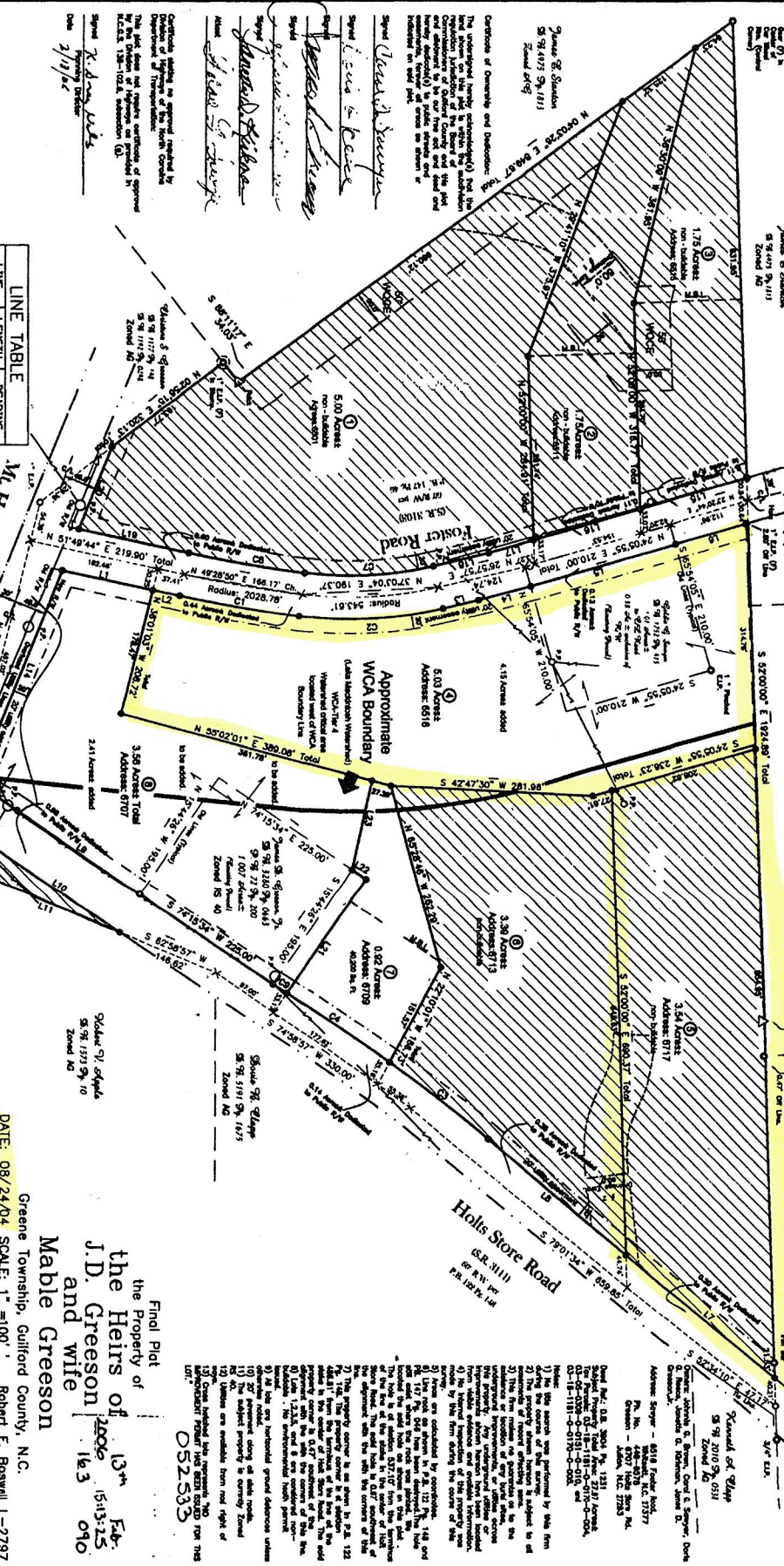
CURVE	LENGTH	ROADS	CH	BEARING	CH DIST
C1	188.87	2008.78	182.73	N 89° 52' 30" E	2000.00
C2	201.82	373.61	182.73	N 89° 52' 30" E	2000.00
C3	172.98	4041.43	182.73	N 89° 52' 30" E	172.83
C4	178.87	4041.43	182.73	N 89° 52' 30" E	172.83
C5	48.11	388.07	182.73	N 89° 52' 30" E	48.11
C6	180.00	513.81	182.73	N 89° 52' 30" E	180.00
C7	183.75	1884.78	182.73	N 89° 52' 30" E	183.75
C8	212.51	4041.43	182.73	N 89° 52' 30" E	212.51

LINE TABLE

LINE	LENGTH	BEARING
L1	182.54	N 89° 52' 30" E
L2	38.74	N 89° 52' 30" E
L3	27.46	N 89° 52' 30" E
L4	27.46	N 89° 52' 30" E
L5	27.46	N 89° 52' 30" E
L6	186.20	N 89° 52' 30" E
L7	274.23	N 89° 52' 30" E
L8	283.34	N 89° 52' 30" E
L9	283.34	N 89° 52' 30" E
L10	187.48	N 89° 52' 30" E
L11	283.34	N 89° 52' 30" E
L12	283.34	N 89° 52' 30" E
L13	283.34	N 89° 52' 30" E
L14	283.34	N 89° 52' 30" E

LINE TABLE

LINE	LENGTH	BEARING
L1	182.54	N 89° 52' 30" E
L2	38.74	N 89° 52' 30" E
L3	27.46	N 89° 52' 30" E
L4	27.46	N 89° 52' 30" E
L5	27.46	N 89° 52' 30" E
L6	186.20	N 89° 52' 30" E
L7	274.23	N 89° 52' 30" E
L8	283.34	N 89° 52' 30" E
L9	283.34	N 89° 52' 30" E
L10	187.48	N 89° 52' 30" E
L11	283.34	N 89° 52' 30" E
L12	283.34	N 89° 52' 30" E
L13	283.34	N 89° 52' 30" E
L14	283.34	N 89° 52' 30" E



CONDITIONS OF GUARANTEE AND INSURANCE

The undersigned hereby warrants and insures that the above plat is a true and correct copy of the original as filed in the office of the Surveyor General of North Carolina, and that the same is a true and correct copy of the original as filed in the office of the Surveyor General of North Carolina.

Surveyor General
Robert E. Sharon
L-2797

APPROXIMATE WCA BOUNDARY

WCA-110-4
WCA-110-5
WCA-110-6
WCA-110-7
WCA-110-8
WCA-110-9
WCA-110-10
WCA-110-11
WCA-110-12
WCA-110-13
WCA-110-14
WCA-110-15
WCA-110-16
WCA-110-17
WCA-110-18
WCA-110-19
WCA-110-20
WCA-110-21
WCA-110-22
WCA-110-23
WCA-110-24
WCA-110-25
WCA-110-26
WCA-110-27
WCA-110-28
WCA-110-29
WCA-110-30

Final Plat

the Property of
J.D. Gresson
and wife
Mable Gresson

Greene Township, Guilford County, N.C.
Robert E. Boswell L-2797

Boswell Surveyors, Inc.

505 East Duke Street, 336-227-8723 (phone)
Burlington, NC 27215 336-222-8917 (fax)
surveyor@boswell.net

DATE: 08/24/04 SCALE: 1" = 100'

GRAPHIC SCALE

1 inch = 100 feet

Job No. 2004-341

GRAPHIC SCALE

1 inch = 100 feet

Job No. 2004-341