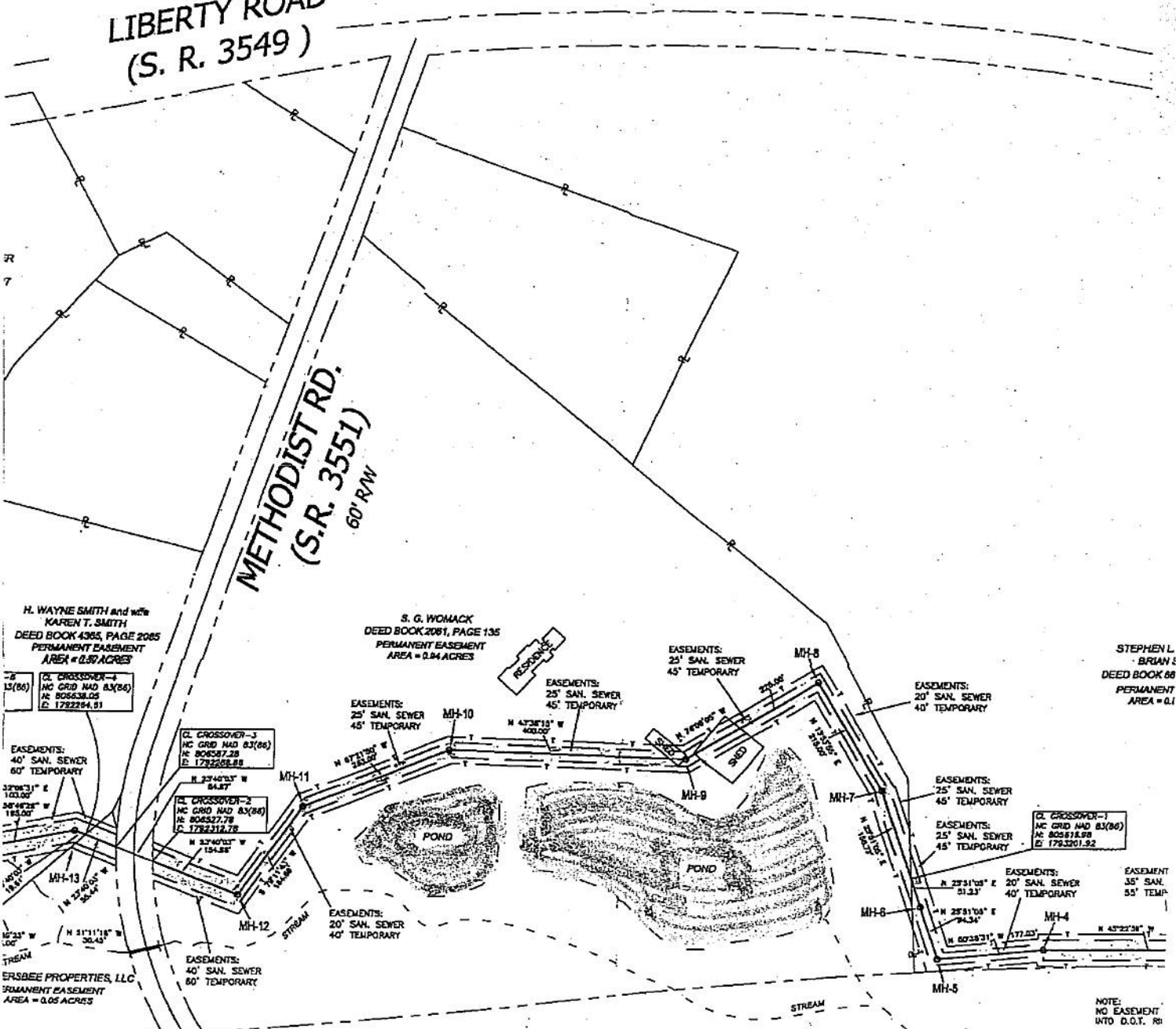


TW GARNER S. WOMACK (SNT)

5819 METHODIST ROAD (27.1 ACRES VAC. LAND)
CLIMAX, NC

LIBERTY ROAD
(S. R. 3549)

METHODIST RD.
(S.R. 3551)
60' R/W



H. WAYNE SMITH and wife
KAREN T. SMITH
DEED BOOK 4365, PAGE 2085
PERMANENT EASEMENT
AREA = 0.52 ACRES

S. G. WOMACK
DEED BOOK 2081, PAGE 135
PERMANENT EASEMENT
AREA = 0.94 ACRES

STEPHEN L.
BRIAN
DEED BOOK 88
PERMANENT
AREA = 0.1

EASEMENTS:
40' SAN. SEWER
60' TEMPORARY

EASEMENTS:
25' SAN. SEWER
45' TEMPORARY

EASEMENTS:
25' SAN. SEWER
45' TEMPORARY

EASEMENTS:
20' SAN. SEWER
40' TEMPORARY

EASEMENTS:
25' SAN. SEWER
45' TEMPORARY

EASEMENTS:
25' SAN. SEWER
45' TEMPORARY

EASEMENTS:
20' SAN. SEWER
40' TEMPORARY

EASEMENTS:
25' SAN. SEWER
45' TEMPORARY

EASEMENT:
35' SAN.
55' TEMP.

ERSBEE PROPERTIES, LLC
PERMANENT EASEMENT
AREA = 0.05 ACRES

EASEMENTS:
40' SAN. SEWER
60' TEMPORARY

EASEMENTS:
20' SAN. SEWER
40' TEMPORARY

NOTE:
NO EASEMENT
INTO D.O.T. RR

U. S. HWY. 421